

**INSTRUCTIONS**

1. Original and/or subsequent record used to evaluate the corner position.
2. Description of evidence found, note discrepancies in the record, state method of establishing lost or obliterated corners.
3. Description of monument and accessories set to perpetuate the corner position.
4. Sketch or corner, show all pertinent data which can best be shown in a sketch example, corner marking, topography ties, position of accessories, etc.
5. Certification must be signed and sealed by Registered Land Surveyor in State of Montana.
6. Fill in Cross Index & Section Diagram at bottom of sheet.

**CERTIFIED CORNER RECORDATION**

Corner N 1/4 S5 T. 26N R. 29W P.M.M. Lincoln County

I. 1902 GLO Record by Adams and Weeks - set a limestone 20x10x4 ins., 15 ins in the ground, mkd 1/4 on N. face from which:

- a fir, 8 ins. diam, bears S41°40'E, 22 lks
- a fir, 8 ins. diam, bears N30°30'W, 13 lks

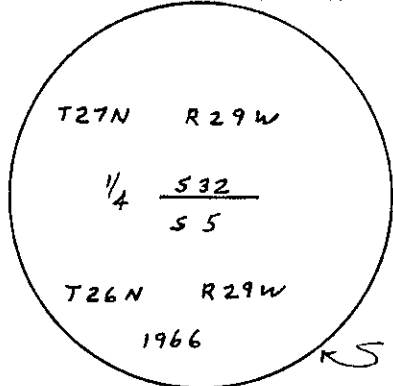
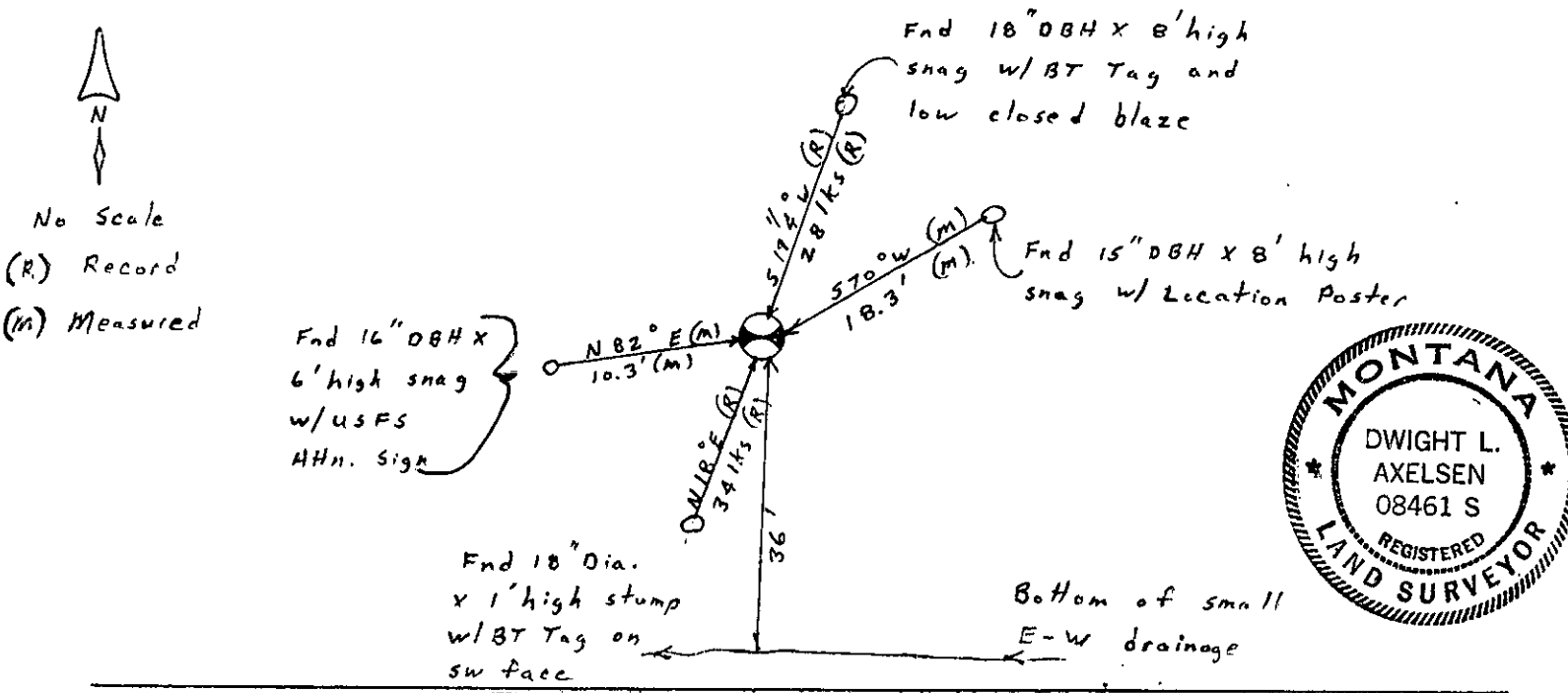
1966 BLM Remonumentation by Leedy - fnd. a limestone 20x8x4 ins, firmly set, mkd 1/4 on N. face; set on iron post, 30 ins. long, 2 1/2 ins. diam, 24 ins in the ground, with brass cap from which:

- a stump hole bears S38°E, 18 lks with fallen log mkd (original BT)
- a fir, 10 ins diam, bears N19 1/4°E, 28 lks, (new BT)
- a fir, 10 ins diam, bears S18°W, 34 lks, (new BT)
- bury the original stone alongside

Plat No. 628 by Burdick, 1959: 1/4 corner found

II. Found 2 1/2" O.D. pipe with 3 1/2" brass cap, 4" up, on steep SW facing slope.

III. See sketch for additional ties and accessories.



**CERTIFICATION**  
 I. Steven B. Ivey, 9329LS  
 certify the information shown herein is true and correct.  
Steven B. Ivey  
 Signature Ground Party/Client  
 I. Dwight L. Axelsen  
 certify that this Corner Record correctly represents work performed by me or under by direction in compliance with the "Corner Recordation Act" (70-22-101, et seq., M.D.A.)  
Dwight L. Axelsen  
 Signature of Surveyor & Seal  
 Date: Dec. 89 Reg. No. 8641LS  
 Employer: Delta Engineering

Office of Clerk and Recorder, County of Lincoln. This "corner record" was filed for record on the Dec 1 day of 1989 was noted on the cross-index plat and is assigned page No. 4111, in book No. \_\_\_\_\_  
Janet BT Seal by Dill Snickhoff  
 County Official

