

INSTRUCTIONS

1. Original and/or subsequent record used to evaluate the corner position.
2. Description of evidence found, note discrepancies in the record, state method of establishing lost or obliterated corners.
3. Description of monument and accessories set to perpetuate the corner position.
4. Sketch or corner, show all pertinent data which can best be shown in a sketch example, corner marking, topography lies, position of accessories, etc.
5. Certification must be signed and sealed by Registered Land Surveyor in State of Montana.
6. Fill in Cross Index & Section Diagram at bottom of sheet.

CERTIFIED CORNER RECORDATION

Sec. 33 and 34 T 27 N R 29 W
 Corner Sec. 3 and 4 T. 26N R. 29W P.M.M. Lincoln County

Record 1902

Set a lime stone 18x10x8 ins. 12 ins in the ground for cor. of sections 3,4,33 and 34 marked with 3 notches on the E. and 3 notches on the W. edges, from which;

A fir 10 ins. dia. bears N10°30'E 24 lks. distance marked T27NR29WS34BT

A fir 8 ins. dia. bears S43°45' E 4 lks. distance marked T26NR29WS3BT

A pine 12 ins. dia. bears S29°W 16 lks. distance marked T26NR29WS4BT

A fir 12 ins. dia. bears N33°30'W 29 lks. distance marked T27NR29WS33BT

Record 1966 B.L.M.

The cor. of sec. 3,4,33, and 34 on the N. bdy. of the tp., monumented with a broken limestone, loosely set, marked with 3 notches on the E. and W. edges, and witnessed by the original bearing trees. At the corner point. Set an iron post, 30" long 2½" dia., 24" in the ground, with brass cap marked as shown below. From which;
 The original bearing trees:

A fir, 14" dia. bears N13 3/4°E, 24 lks. dist. marked with overgrown blaze.

A fir, 12" dia. bears S53E, 4 lks dist. marked illegible.

A pine, 10" dia. bears S29°W, 16 lks. dist. marked T26NR29WS4BT

A fir, 14" dia. bears N33½°W, 29 lks. dist. marked T27NR29WS33BT

Bury the original stone alongside the iron post.

FOUND

A standard B.L.M. brass cap on a steel post; from which

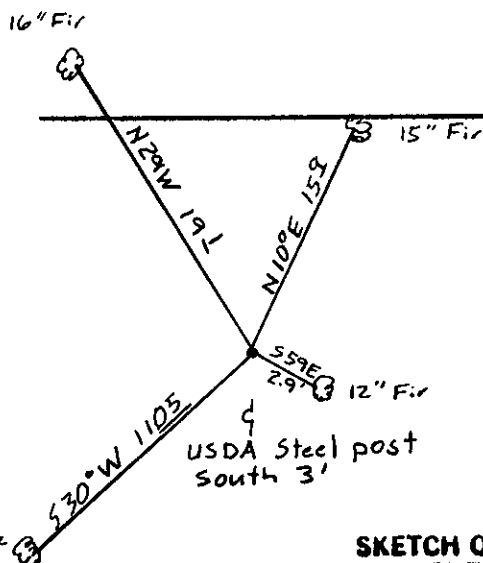
A 15" fir bears N10°E 15.9' scribe overgrown.

A 12" fir bears S59°E 2.88' scribe partly readable.

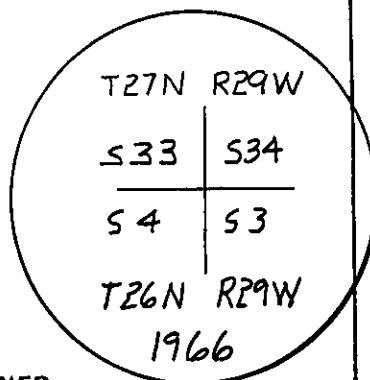
A 10" pine bears S30°W 11.05' scribed T26N R29W S4 BT.

A 16" fir bears N29°W 19.1' scribe partly readable.

Maintained BTs painted red bands around BTs and attached required signs to BTs. A U.S.D.A. 6' steel post bears South 3'



SKETCH OF CORNER



CERTIFICATION

I, Dan Croft
 certify the information shown heretofore is true and correct.

Signature Ground Plan, etc.

I, H. Gene Warren
 certify that this Corner Record correctly represents the corner monumented by me or under my direction in compliance with the "Corner Recordation Act" (70-22-101, et seq., M.D.A.)

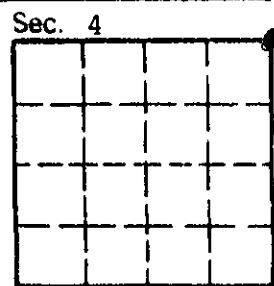
H. Gene Warren
 Signature of Surveyor & Seal
 2734 S

Date: 6/27/89 Reg. No. 2734 S
 Employer: Rocky Mtn. Surveyors

Office of Clerk and Recorder, County of Lincoln. This "corner record" was filed for record on the July 3 day of 1989 was noted on the cross-index plat and is assigned page No. 4064, in book No.

Janet BF Sugil by Bill Duseoff
 County Official Dep.

Cross Index No. A-13 T. 26N R. 29W P.M.M.



• corner this sheet