

INSTRUCTIONS

1. Original and/or subsequent record used to evaluate the corner position.
2. Description of evidence found, note discrepancies in the record, state method of establishing lost or obliterated corners.
3. Description of monument and accessories set to perpetuate the corner position.
4. Sketch or corner, show all pertinent data which can best be shown in a sketch example, corner marking, topography ties, position of accessories, etc.
5. Certification must be signed and sealed by Registered Land Surveyor in State of Montana.
6. Fill in Cross Index & Section Diagram at bottom of sheet.

CERTIFIED CORNER RECORDATION

Corner $\frac{1}{4}$ Sec. 3 and 4 T. 26N R. 29W P.M.M. Lincoln County

RECORD 1903

Set a limestone, 18x14x6 ins., 14 ins. in the ground, for $\frac{1}{4}$ sec. cor., marked $\frac{1}{4}$ on W. face; from which
 A fir 6" dia. bears N71°30'E 30 lks. dist. marked $\frac{1}{4}$ S3 BT.
 A pine 30" dia. bears N43°30'W 14 lks. dist. marked $\frac{1}{4}$ S4 BT.

FOUND

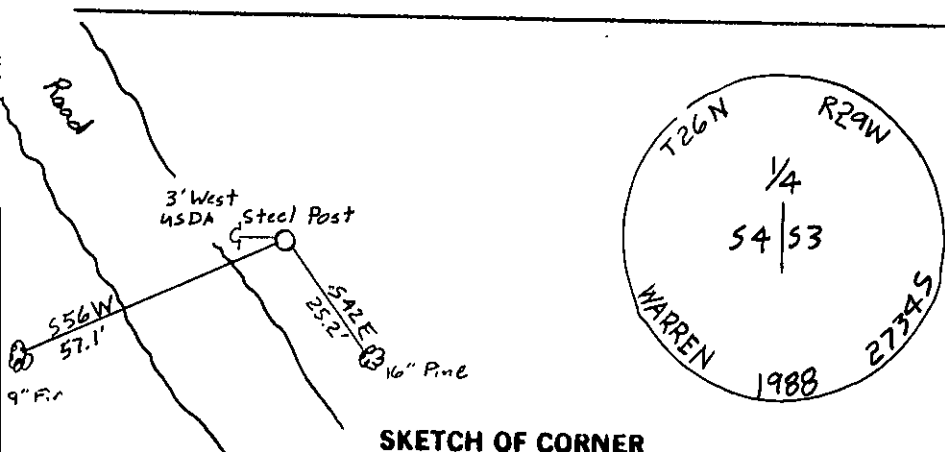
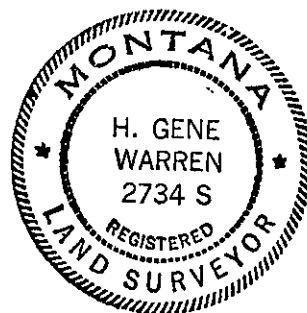
No original corner or bearing objects were found. This corner was set by single proportion. At the corner point we set a standard Forest Service aluminum $3\frac{1}{4}$ " cap on a aluminum pipe from which;

A 16" pine bears S42°E 25.2' blazed and scribed $\frac{1}{4}$ S3 BT

A 9" fir bears S56°W 57.1' blazed and scribed $\frac{1}{4}$ S4 BT

A U.S.D.A. steel post bears West 3'

Painted red bands around BTs and attached required signs to BTs.



SKETCH OF CORNER

CERTIFICATION

I, Glenn M. Knodle

certify the information shown herein is true and correct.

Glenn M. Knodle
 Signature Ground Party Chief

I, H. Gene Warren

certify that this Corner Record correctly represents work performed by me or under my direction in compliance with the "Corner Recordation Act" (70-22-101, et seq., M.D.A.)

H. Gene Warren
 Signature of Surveyor & Seal

Date: 12/22/88 Reg. No. 2734S

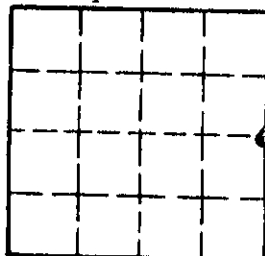
Employer: _____

Office of Clerk and Recorder, County of Lincoln. This "corner record" was filed for record on the Jan. 24 day of 1989 was noted on the cross-index plat and is assigned page No. 3958, in book No. _____

Janet B. Sigel by Deed Sigel
 County Official Dep.

Cross Index No. C-13 T. 26N R. 29W PMM

Sec. 4



• corner this sheet