

CERTIFIED LAND CORNER RECORDATION

SECTION 18 TWP 26 N., R. 29 W., M.P.M.

DESCRIPTION OF CORNER EVIDENCE FOUND, AND ORIGINAL RECORD (IF KNOWN)

NW Corner found stone and one B.T.,
NE Corner Found stone, B.T.s destroyed
E $\frac{1}{4}$ Corner Brass Cap by B.L.M.
SE Corner reported found by Bonnerville Power Adm. Not used this survey
S $\frac{1}{4}$ Corner stone and two B.T.s -
SW Corner Brass Cap by B.L.M.
E $\frac{1}{4}$ Corner - not previously set

DESCRIPTION OF MONUMENT AND ACCESSORIES ESTABLISHED
TO PERPETUATE THE ORIGINAL LOCATION OF THIS CORNER:

Date of work: June, 1975

SEE DIAGRAM ON REVERSE SIDE

SKETCH, WITH COURSE AND DISTANCE TO ADJACENT CORNERS IF DETERMINED IN THIS SURVEY.
(MAY SKETCH OR PASTE REPRODUCTION ON REVERSE SIDE.)

SEE DIAGRAM ON REVERSE SIDE

Surveyor's Seal

I, J.H. Ninneman
certify that the information shown herein is true and
correct.

Jack H. Ninneman
Signature of Ground Party Chief

I, Jack W. Ninneman
certify that I have carefully performed or reviewed the
work done on the diagrammed corner as reported on this
recordation form and approve the same.

Jack W. Ninneman
Signature of Surveyor

DIAGRAM OF CORNER:

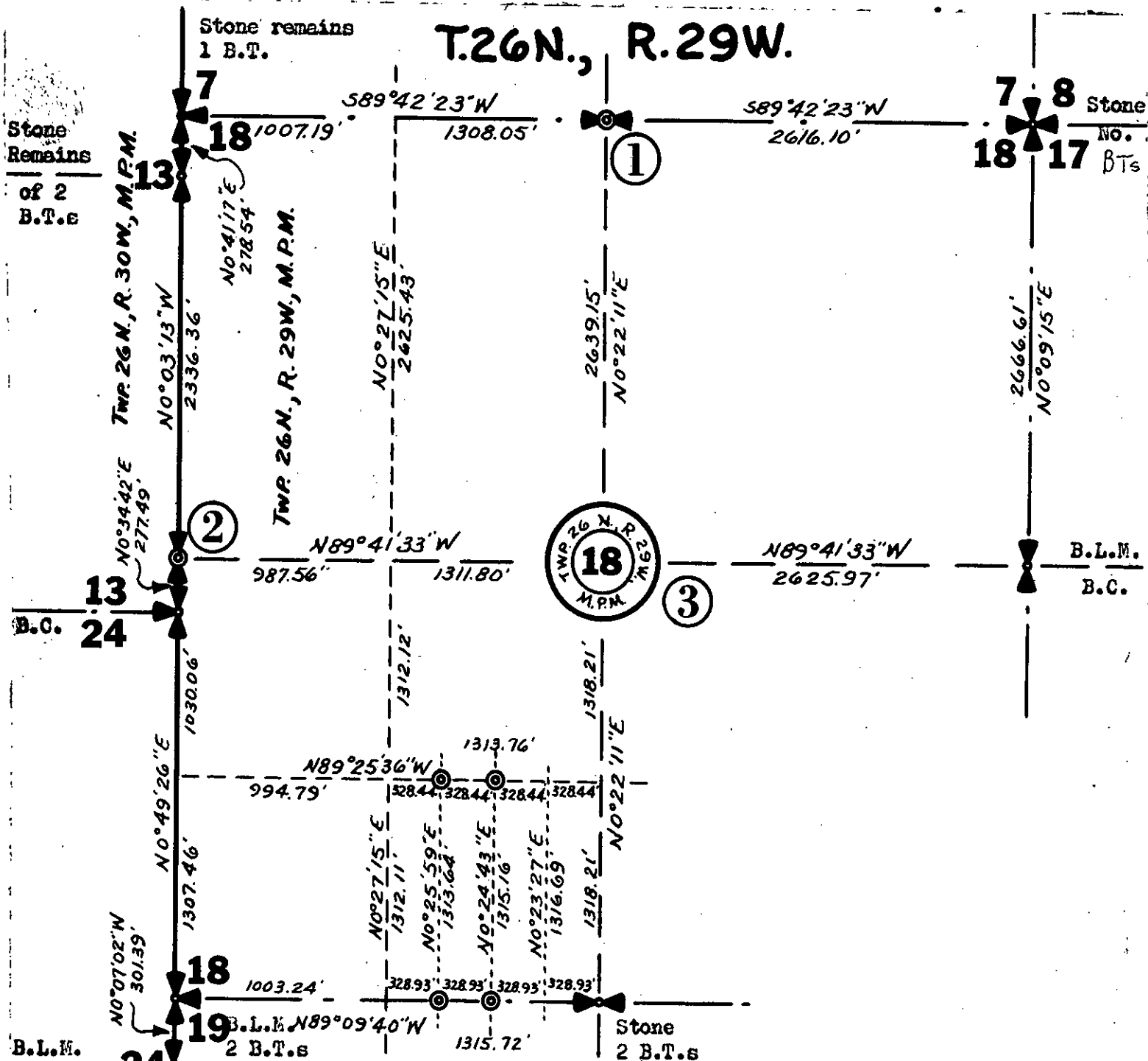
N. See reverse
side diagram

= Corner recorded on the sheet

MT. 534 E.S.
Registration Number

Office of Clerk and Recorder, County of Lincoln
This "corner record" was filed for record on the 28th day of July 1975, was noted on the cross-index plat and is
assigned page No. 387, in book No. 1
Edward L. Vaughn, Jr. Deputy
County Official

T.26N., R.29W.



1. Set A $\frac{1}{2}$ "X24" Steel Rod With Cap Stamped J.N.534 E.S.
2. Set A $\frac{1}{2}$ "X24" Steel Rod With Cap Stamped J.N. 534 E.S. .
3. Set A $\frac{1}{2}$ "X24" Steel Rod With Cap Stamped J.N. 534 E.S.
- © Set $\frac{1}{2}$ "X24" Steel Rods With Caps Stamped J.N. 534 E.S.

- A 12" Pine Bears N 28° E 20.10 Ft. Scribed $\frac{1}{4}$ S 7 & Posted
- A 10" Pine Bears S 11° W 4.80 Ft. Scribed $\frac{1}{4}$ S 18 & Posted
- A 10" Fir Bears N 38° E 55.70 Ft. Scribed $\frac{1}{4}$ S 18 & Posted
- A 6" Pine Bears N 30° W 24.30 Ft. Scribed $\frac{1}{4}$ S 13 & Posted
- A 12" Fir Bears N 86° E 8.50 Ft. Scribed $\frac{1}{4}$ S 18 & Posted
- A 10" Pine Bears N 85° W 52.20 Ft. Scribed $\frac{1}{4}$ S 18 & Posted
- At All Four Corners Of The E $\frac{1}{2}$ W $\frac{1}{2}$ SE $\frac{1}{4}$ SW $\frac{1}{4}$ (No B.T.s Scribed Or Posted)