

CLASSIFIED LAND CORNER RECORDATION

DESCRIPTION OF CORNER EVIDENCE FOUND, AND ORIGINAL RECORD (IF KNOWN)

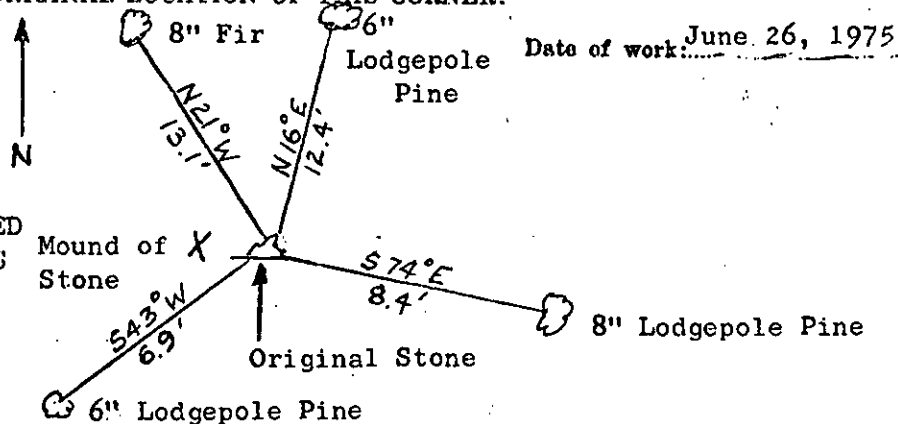
ORIGINAL G.L.O. NOTES: "Set a slatestone, 14X10X5 ins., 10 ins. in the ground, for cor. of secs. 17,18,19, and 20, marked with 3 notches on S. and 5 notches on E. edge; and raise a mound of stone, 2 ft. base, 1½ ft. high, W. of cor."

FOUND: FOUND 14X10X5 ins. SLATESTONE WITH 3 NOTCHES ON THE SOUTH AND 5 NOTCHES ON THE EAST SIDES, ALSO FOUND A MOUND OF STONE, 2 FOOT BASE, 1½ FEET HIGH

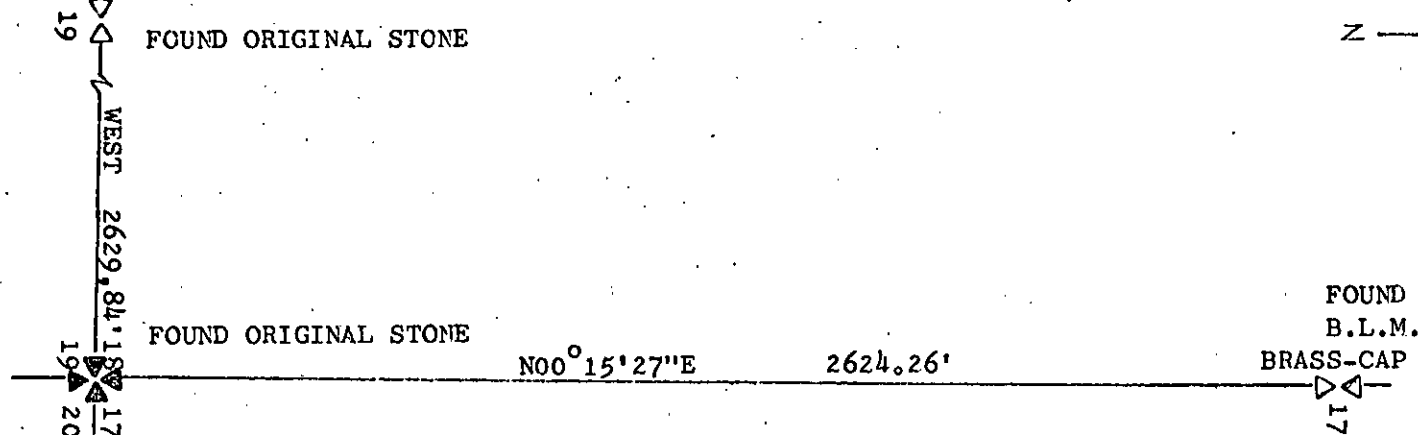
DESCRIPTION OF MONUMENT AND ACCESSORIES ESTABLISHED TO PERPETUATE THE ORIGINAL LOCATION OF THIS CORNER:

To perpetuate this corner we scribed bearing tree from a found corner stone monument.

ALL BEARING TREES SCRIBED "R M " AND LOCATOR CARDS ATTACHED TO THE TREES.



SKETCH, WITH COURSE AND DISTANCE TO ADJACENT CORNERS IF DETERMINED IN THIS SURVEY. (MAY SKETCH OR PASTE REPRODUCTION ON REVERSE SIDE.)



Surveyor's Seal

I, JAMES BURTON, certify that the information shown herein is true and correct.

James Burton

Signature of Ground Party Chief

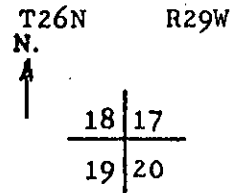
I, M.L. HAIGES, certify that I have carefully performed or reviewed the work done on the diagrammed corner as reported on this recordation form and approve the same.

M.L. Haiges

Signature of Surveyor

2520S
Registration Number

DIAGRAM OF CORNER:



S.E. Sec. Cor. Sec. 18

+ = Corner recorded on the sheet

Office of Clerk and Recorder, County of Lincoln

This "corner record" was filed for record on the 30th day of June, 1975, was noted on the cross-index plat and is assigned page No. 378, in book No. 1.

Elaine L. Vaughn
County Official