

## INSTRUCTIONS

1. Original and/or subsequent record used to evaluate the corner position.
2. Description of evidence found, note discrepancies in the record, state method of establishing lost or obliterated corners.
3. Description of monument and accessories set to perpetuate the corner position.
4. Sketch of corner, show all pertinent data which can best be shown in a sketch example, corner marking, topography ties, position of accessories, etc.
5. Certification must be signed and sealed by Land Surveyor registered in the State of Montana.
6. Fill in Cross Index & Section Diagram at bottom of sheet.

## CERTIFIED CORNER RECORDATION

Corner Section 3 | Section 2 T. 26 N., R. 29 W., P.M.M. Lincoln County  
Section 10 | Section 11 Dates: March 29, 1985 & July 27, November 11, 1986

1) ORIGINAL RECORD-OCTOBER, 1903: Set a Sandstone, 16X10X6 ins., 11 ins. in the ground, for cor. of Secs. 2, 3, 10 and 11, marked with 5 notches on S. and 2 notches on E. edges; from which:

A fir, 10 ins. diam., bears N. 87°45'E., 99 lks. dist., marked:

T26N R29W S2 BT.

A fir, 10 ins. diam., bears S. 86°E., 85 lks. dist., marked:

T26N R29W S11 BT

An Alder, 8 ins. diam., bears S. 13°10'W., 28 lks. dist., marked:

T26N R29W S10 BT

An Alder, 5 ins. diam., bears N. 66°W., 27 lks. dist., marked:

T26N R29W S3 BT

SUBSEQUENT RECORD:-1964: As determined from the remains of two original bearing trees: Set an iron post, 30 ins. long, 2 1/2 ins. diam., 27 ins. in the ground, with brass cap marked as shown in sketch below; from which:

The remains of the original bearing trees:

A stump, 16 ins. diam., bears N. 87 3/4°E., 99 lks. dist., mkd.

T26N R29W S2 BT

A stump, 12 ins. diam., bears S. 86°E., 85 lks. dist., marked

T26N R29W S11 BT

The new bearing trees:

A larch, 22 ins. diam., bears S. 54°E., 70 lks. dist., marked

T26N R29W S11 BT

A larch, 7 ins. diam., bears S. 10°W., 72 lks. dist., marked

T26N R29W S10 BT

SUBSEQUENT RECORDS:-1985: per Corner Record No. 3060; as determined from a found sandstone 16"X10"X6" lying on its face, 2 notches on one side, 4 notches on another; held location of disturbed earth below stone which outlined it's location; set 5/8" rebar w/cap stamped Doyle 2516S and buried stone on north side of rebar, from which:

found fir stump in NE Quad at record brg. & dist., no scribing visible {burned}

found root crown of alder in SE Quad at record brg. & dist.

A fir, 14 ins. diam., bears N. 47°E., 39.61 ft. dist.

A larch, 24 ins. diam., bears S. 62°W., 48.86 ft. dist.

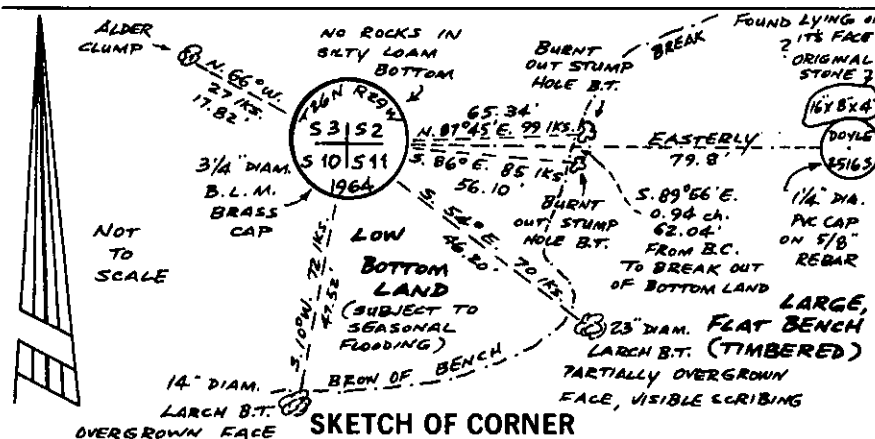
This corner set per Certificate of Survey No. 1400.

2) EVIDENCE FOUND:-1985, 1986: Found 3 1/4 ins. diam. B.L.M. brass capped monument on 2 1/2 inch diam. iron post, 3 ins. above ground, marked as shown in sketch below from which:

A burnt out stump hole, bears N. 87°45'E., 99 lks. dist.

A burnt out stump hole, bears S. 86°E., 85 lks. dist.

{continued on reverse side}



## CERTIFICATION

I, L.A. Dolezal

certify the information shown herein is true and correct.

L.A. Dolezal  
Signature Group Party Chief

I, Melvin D. Lauteren

certify that this Corner Record correctly represents work performed by me or under my direction in compliance with the "Corner Recordation Act" (70-22-101 et seq., M.C.A.)

Melvin D. Lauteren  
Signature of Surveyor & Seal

Date: 12/1/86 Reg. No. 4232S

Employer: Kootenai Engineering, Inc.

Office of Clerk and Recorder, County of Lincoln. This "corner

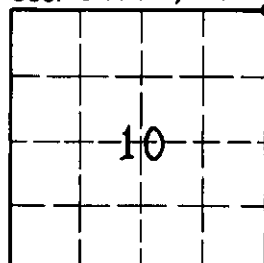
record" was filed for record on Dec 2, 1986

was noted on the cross-index plat and is assigned page No. 3438, in

book No. \_\_\_\_\_

Janet B. Siegel by Bill Smith  
County Official

Sec. 10 T26N., R29W.



Cross Index No. \_\_\_\_\_ T. \_\_\_\_\_ R. \_\_\_\_\_ P.M.M.

• - corner this sheet

# INSTRUCTIONS TO SURVEYORS FOR COMPLETION OF CERTIFIED CORNER RECORDATION FORMS

## I. ORIGINAL AND/OR SUBSEQUENT RECORD:

This item should describe or quote those portions of the original or subsequent record which were used in evaluating the corner position. The original record will usually be the General Land Office field notes. Subsequent record can come from several sources: Previously filed corner records, maps and plats, private and public records, etc. Some of the subsequent record, even though not in the public record, but known to have validity by the surveyor, may be quoted and appropriately noted.

The record data helps support the reestablished corner position because it clearly shows what history the surveyor based his corner position on. In some cases, however, the record may be unknown or not pertinent. A statement to that effect should appear on the corner record.

## II. DESCRIPTION OF EVIDENCE FOUND OR METHOD OF LOCATING CORNER POSITION:

This item will describe the original or subsequent record evidence found. If portions of the found evidence cannot be reconciled with the record, then the disregarded record should be noted, and, if possible, an opinion as to its cause narrated.

If no physical evidence of the original or subsequent monuments and accessories can be found, then the method used to reestablish the lost or obliterated corner (single proportion, fence intersection, parol evidence, terrain calls, centerline of road, etc.) shall be indicated.

## III. DESCRIPTION OF MONUMENTS AND ACCESSORIES SET TO PERPETUATE THE CORNER POSITION:

This item should list all details about the corner and its location which will help exclusively identify the corner position; including size and type of monument, how marked if not shown in sketch, and distinguishing topographic calls which help locate the corner. In many cases, instructions on how to find the corner should be included.

References or ties to other corners are optional and may be drawn on the face or back of the corner record form, or references to Certificate of Survey may be made. Separate drawings may be attached to the corner form.

If state plane coordinate values for the corner position are shown, then the control upon which they are based should be indicated.

## IV. SKETCH OF CORNER:

This item will usually show how a found or set corner is marked and may also show topography or accessory monuments found or set and their relation to the corner. There is no stipulated format; the sketch could be transcribed field note entries.

## V. CERTIFICATION:

The name and signature of the ground party chief is optional.

The Surveyor who performed or directed the field work which is depicted on the "Certified Corner Record" shall sign and affix his seal in the Certification.

The employer blank is optional but useful in tracking down original field note data or adjacent record if, in the future, questions arise about the corner.

## VI.

The Cross Index at the bottom of the page should be completed by the Surveyor. Only the single Township Index where the corner is filed shall be completed.

The lower righthand corner is a corner location diagram and should have the pertinent section filled in at the top and a closed circle indicating the appropriate corner position in the section filled in. This is intended to be an aid in searching the "Record" once it has been filed.

{continued from front}

A larch, 23 ins. diam., bears S. 54°E., 70 lks. dist., partially overgrown blaze, visible scribing facing brass cap

A larch, 14 ins. diam., bears S. 10°W., 72 lks. dist., with overgrown blaze facing brass cap

An alder clump with living alders and fallen, rotted alder remains, bears N. 66°W., 27 lks. dist., with no evidence of blaze or scribing.

A 5/8 inch dia. rebar with 1 1/4 inch dia. PVC Cap stamped: Doyle 2516S with what appears to be the original stone 16X8X4 ins. buried alongside to north; stone having 2 notches on 8 ins. edge and 5 notches on 4 ins. edge; these bearing Easterly, 79.8 ft. dist.

Both larch bearing trees have U.S.F.S. 8T tags above blazes, facing brass cap.

33 MONUMENT AND ACCESSORIES ESTABLISHED: None at this time.