

CERTIFIED LAND CORNER RECORDATION

DESCRIPTION OF CORNER EVIDENCE FOUND, AND ORIGINAL RECORD (IF KNOWN)
3 1/4" BRASS CAP BLM (FOUND)

DESCRIPTION OF MONUMENT AND ACCESSORIES ESTABLISHED
 TO PERPETUATE THE ORIGINAL LOCATION OF THIS CORNER:

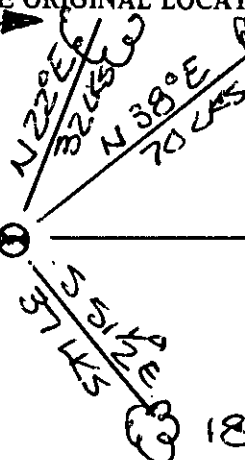
ORIGINAL 1ST
 STUMP 16"

12" FIR

Date of work:

7-85

S 1/4 SEC. 10



SKETCH, WITH COURSE AND DISTANCE TO ADJACENT CORNERS IF DETERMINED IN THIS SURVEY.
 (MAY SKETCH OR PASTE REPRODUCTION ON REVERSE SIDE.)

See Corp 1400

Surveyor's Seal

I, _____
 certify that the information shown herein is true and correct.

Signature of Ground Party Chief

I, _____
 certify that I have carefully performed or reviewed the work
 done on the diagrammed corner as reported on this recordation
 form and approve the same.

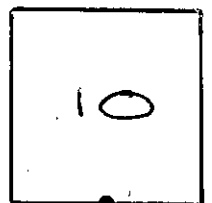
Chas. A. [Signature]

Signature of Surveyor

2516-S

Registration Number

DIAGRAM OF CORNER:



S 1/4 = Corner recorded on the sheet

Office of Clerk and Recorder, County of Lincoln

This "corner record" was filed for record on the 3 day of Sept 19 85, was noted on the cross-index plat and is
 assigned page No. 3066, in book No. _____

Janet B. Sugely
 County Official

T 26 N R 29 W