

CERTIFIED LAND CORNER RECORDATION

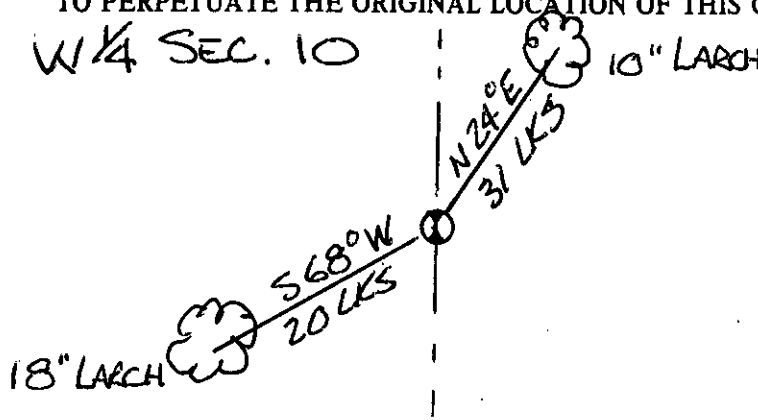
DESCRIPTION OF CORNER EVIDENCE FOUND, AND ORIGINAL RECORD (IF KNOWN)

Found 3/4" BRASS CAP BLK

DESCRIPTION OF MONUMENT AND ACCESSORIES ESTABLISHED TO PERPETUATE THE ORIGINAL LOCATION OF THIS CORNER:

W 1/4 SEC. 10

Date of work: 7-85



SKETCH, WITH COURSE AND DISTANCE TO ADJACENT CORNERS IF DETERMINED IN THIS SURVEY. (MAY SKETCH OR PASTE REPRODUCTION ON REVERSE SIDE.)

See CAPS 1400

DIAGRAM OF CORNER:

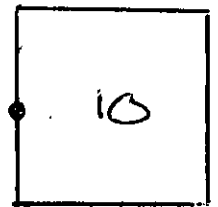
Surveyor's Seal

I, \_\_\_\_\_  
certify that the information shown herein is true and correct.

\_\_\_\_\_  
Signature of Ground Party Chief

I, \_\_\_\_\_  
certify that I have carefully performed or reviewed the work done on the diagrammed corner as reported on this recordation form and approve the same.

*John W. Pyle*  
\_\_\_\_\_  
Signature of Surveyor



W 1/4 = Corner recorded on the sheet

2516-5  
Registration Number

Office of Clerk and Recorder, County of Lincoln

This "corner record" was filed for record on the 3 day of Sept 19 85, was noted on the cross-index plat and is assigned page No. 3065, in book No. \_\_\_\_\_

*Janet BF Seigel by Bill Backoff*  
\_\_\_\_\_  
County Official

T 26 N R 29 W