

# CERTIFIED LAND CORNER RECORDATION

DESCRIPTION OF CORNER EVIDENCE FOUND, AND ORIGINAL RECORD (IF KNOWN)

FOUND  $3\frac{1}{4}$ " BRASS CAP BLM

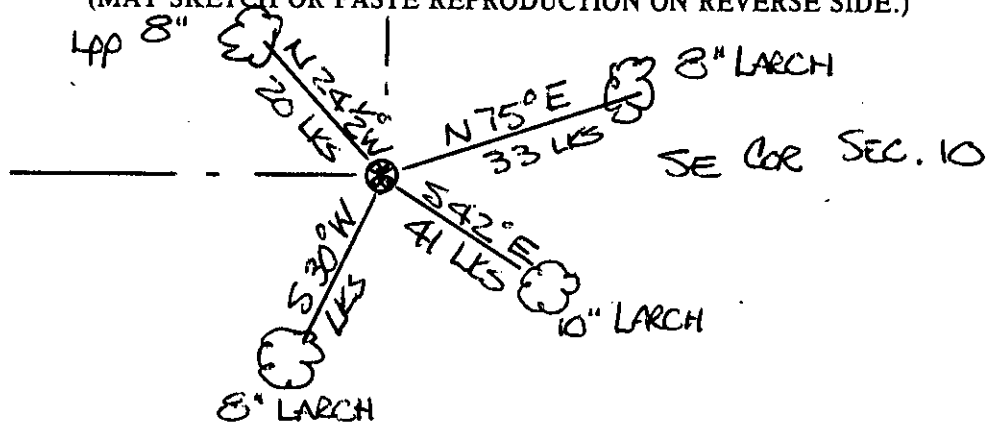
DESCRIPTION OF MONUMENT AND ACCESSORIES ESTABLISHED  
TO PERPETUATE THE ORIGINAL LOCATION OF THIS CORNER:

Date of work:

7-85

SKETCH, WITH COURSE AND DISTANCE TO ADJACENT CORNERS IF DETERMINED IN THIS SURVEY.  
(MAY SKETCH OR PASTE REPRODUCTION ON REVERSE SIDE.)

SEE CAP  
1400



Surveyor's Seal

I, \_\_\_\_\_  
certify that the information shown herein is true and correct.

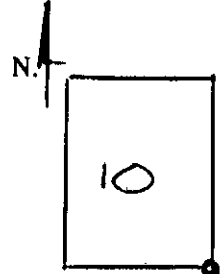
Signature of Ground Party Chief

I, \_\_\_\_\_  
certify that I have carefully performed or reviewed the work  
done on the diagrammed corner as reported on this recordation  
form and approve the same.

*Chas. N. J. J.*  
Signature of Surveyor

2516-S  
Registration Number

DIAGRAM OF CORNER:



SE = Corner recorded on the sheet

Office of Clerk and Recorder, County of

Lincoln

This "corner record" was filed for record on the 3 day of Sept 19 85, was noted on the cross-index plat and is

assigned page No. 3064, in book No. \_\_\_\_\_

*James H. Sigel by Bill Smith*  
County Official

T 26 N R 29 W