

# CERTIFIED LAND CORNER RECORDATION

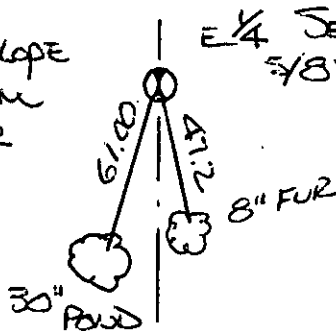
DESCRIPTION OF CORNER EVIDENCE FOUND, AND ORIGINAL RECORD (IF KNOWN)

SET  $\frac{3}{8}$ " Rebar by Single Proportion

DESCRIPTION OF MONUMENT AND ACCESSORIES ESTABLISHED  
TO PERPETUATE THE ORIGINAL LOCATION OF THIS CORNER:

Date of work: 7-85

61.00 FT Slope  
Distance from  
Top of Rebar  
to Nail in  
Tree



SKETCH, WITH COURSE AND DISTANCE TO ADJACENT CORNERS IF DETERMINED IN THIS SURVEY.  
(MAY SKETCH OR PASTE REPRODUCTION ON REVERSE SIDE.)

SEE Cops  
1400

Surveyor's Seal

I, \_\_\_\_\_  
certify that the information shown herein is true and correct.

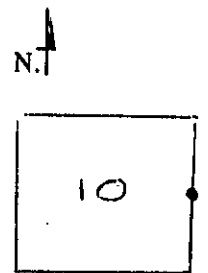
\_\_\_\_\_  
Signature of Ground Party Chief

I, \_\_\_\_\_  
certify that I have carefully performed or reviewed the work  
done on the diagrammed corner as reported on this recordation  
form and approve the same.

*Chas. W. J. [Signature]*  
Signature of Surveyor

2516-S  
Registration Number

DIAGRAM OF CORNER:



$E \frac{1}{4}$  = Corner recorded on the sheet

Office of Clerk and Recorder, County of Lincoln

This "corner record" was filed for record on the 3 day of Sept 19 85, was noted on the cross-index plat and is  
assigned page No. 3063, in book No. \_\_\_\_\_

*Janet BF [Signature]*  
County Official

T 26N R 29W