

CERTIFIED LAND CORNER RECORDATION

DESCRIPTION OF CORNER EVIDENCE FOUND, AND ORIGINAL RECORD (IF KNOWN)

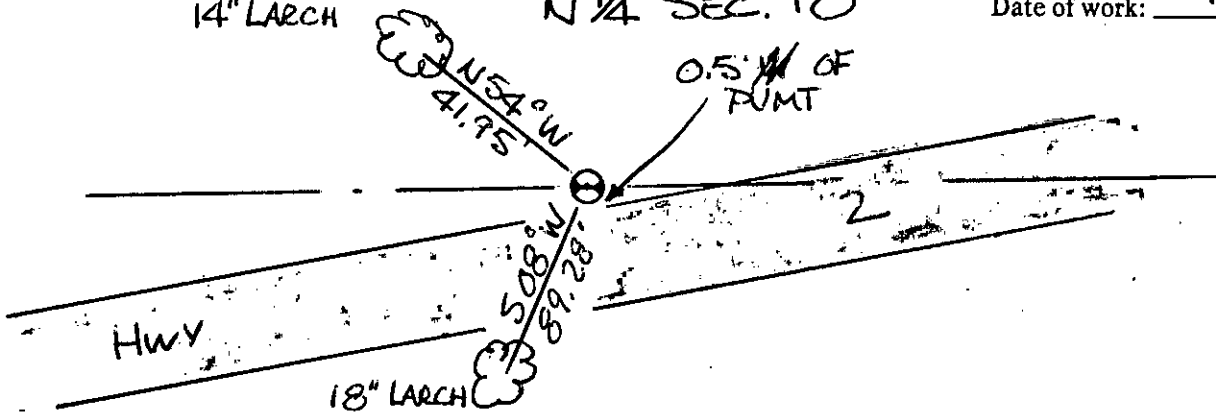
Set 5/8" Rebar by SINGLE PROPORTION

DESCRIPTION OF MONUMENT AND ACCESSORIES ESTABLISHED TO PERPETUATE THE ORIGINAL LOCATION OF THIS CORNER:

14" LARCH

N 1/4 SEC. 10

Date of work: 7-85



SKETCH, WITH COURSE AND DISTANCE TO ADJACENT CORNERS IF DETERMINED IN THIS SURVEY. (MAY SKETCH OR PASTE REPRODUCTION ON REVERSE SIDE.)

SEE CAPS 1400

Surveyor's Seal

I, _____
certify that the information shown herein is true and correct.

Signature of Ground Party Chief

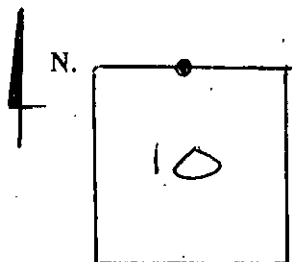
I, _____
certify that I have carefully performed or reviewed the work done on the diagrammed corner as reported on this recordation form and approve the same.

John W. J...

Signature of Surveyor

2516-5
Registration Number

DIAGRAM OF CORNER:



N 1/4 = Corner recorded on the sheet

Office of Clerk and Recorder, County of Lincoln

This "corner record" was filed for record on the 3 day of Sept 19 85, was noted on the cross-index plat and is assigned page No. 3062, in book No. _____

Janet E. Sigel by Bill Buckley

County Official

T 26 N R 29 W