

CERTIFIED LAND CORNER RECORDATION

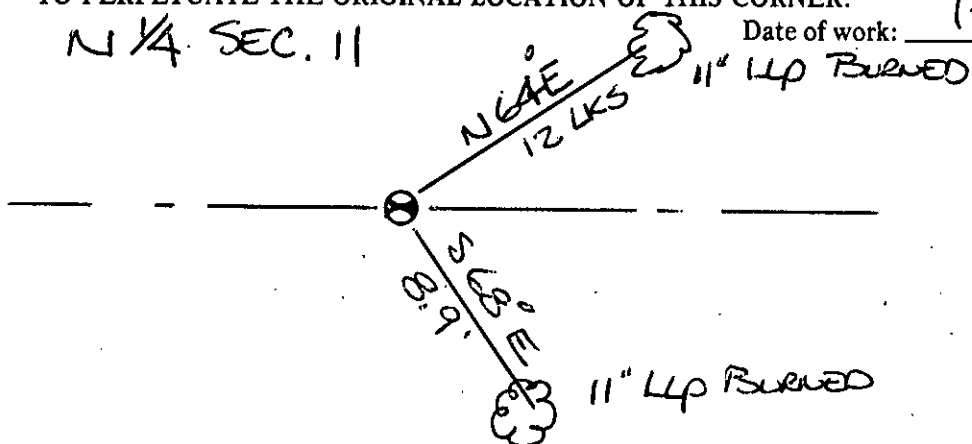
DESCRIPTION OF CORNER EVIDENCE FOUND, AND ORIGINAL RECORD (IF KNOWN)

FOUND 3/4" BRASS CAP BLM

DESCRIPTION OF MONUMENT AND ACCESSORIES ESTABLISHED  
TO PERPETUATE THE ORIGINAL LOCATION OF THIS CORNER:

N 1/4 SEC. 11

Date of work: 7-85



SKETCH, WITH COURSE AND DISTANCE TO ADJACENT CORNERS IF DETERMINED IN THIS SURVEY.  
(MAY SKETCH OR PASTE REPRODUCTION ON REVERSE SIDE.)

SEE CAP 1400

DIAGRAM OF CORNER:

Surveyor's Seal

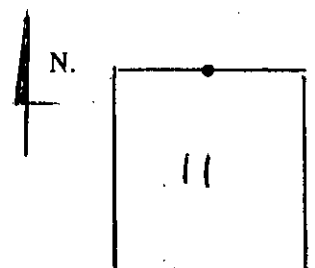
I, \_\_\_\_\_  
certify that the information shown herein is true and correct.

\_\_\_\_\_  
Signature of Ground Party Chief

I, \_\_\_\_\_  
certify that I have carefully performed or reviewed the work  
done on the diagrammed corner as reported on this recordation  
form and approve the same.

*Chris W. J. [Signature]*  
\_\_\_\_\_  
Signature of Surveyor

2516-S  
\_\_\_\_\_  
Registration Number



N 1/4 = Corner recorded on the sheet

Office of Clerk and Recorder, County of Lincoln

This "corner record" was filed for record on the 3 day of Sept 19 85, was noted on the cross-index plat and is  
assigned page No. 3061, in book No. \_\_\_\_\_

*Janet B. [Signature]*  
\_\_\_\_\_  
County Official

T 26 N R 29 W