

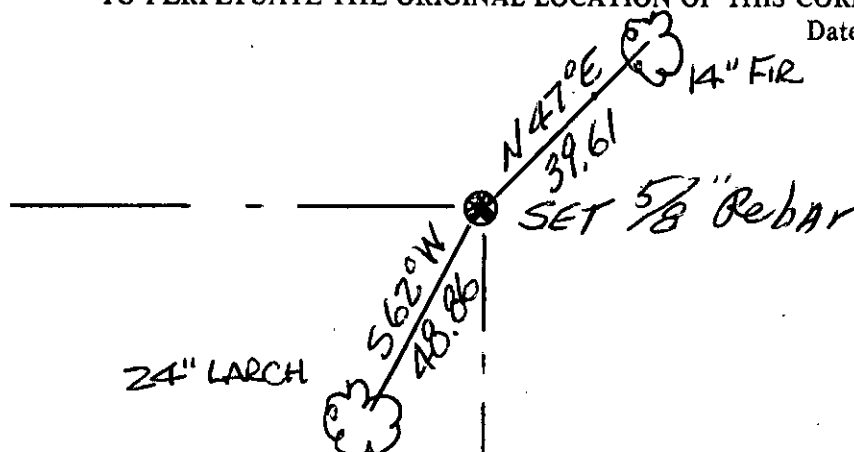
# CERTIFIED LAND CORNER RECORDATION

## DESCRIPTION OF CORNER EVIDENCE FOUND, AND ORIGINAL RECORD (IF KNOWN)

FOUND SANDSTONE 16" X 10" X 6" LYING ON IT'S FACE, 2 NOTCHES ON ONE SIDE, 4 NOTCHES ON ANOTHER  
 FOUND FIR STUMP IN NE QUAD @ RECORD BBA & DIST. NO SCRIBING VISIBLE (BURNED) FOUND ROOT CROWN OF ALDER IN SE QUAD @ RECORD BBA & DIST.  
 HELD LOCATION OF ~~DISTURBED~~ EARTH BELOW STONE WHICH OUTLINED IT'S LOCATION. SET 5/8" REBAR W/CAP STAMPED DOYLE 2516-S AND BURIED STONE ON NORTH SIDE OF REBAR

## DESCRIPTION OF MONUMENT AND ACCESSORIES ESTABLISHED TO PERPETUATE THE ORIGINAL LOCATION OF THIS CORNER:

Date of work: 7-85



SKETCH, WITH COURSE AND DISTANCE TO ADJACENT CORNERS IF DETERMINED IN THIS SURVEY.  
 (MAY SKETCH OR PASTE REPRODUCTION ON REVERSE SIDE.)

SEE C/S 1400

Surveyor's Seal

I, \_\_\_\_\_  
 certify that the information shown herein is true and correct.

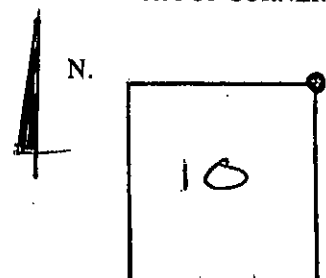
\_\_\_\_\_  
 Signature of Ground Party Chief

I, \_\_\_\_\_  
 certify that I have carefully performed or reviewed the work done on the diagrammed corner as reported on this recordation form and approve the same.

[Signature]  
 Signature of Surveyor

2516-S  
 Registration Number

DIAGRAM OF CORNER:



NE= Corner recorded on the sheet

Office of Clerk and Recorder, County of Lincoln

This "corner record" was filed for record on the 3 day of Sept 19 85, was noted on the cross-index plat and is assigned page No. 3060, in book No. \_\_\_\_\_

[Signature]  
 County Official

T 26 N R 29 W