

INSTRUCTIONS

1. Original and/or subsequent record used to evaluate the corner position.
2. Description of evidence found, note discrepancies in the record, state method of establishing lost or obliterated corners.
3. Description of monument and accessories set to perpetuate the corner position.
4. Sketch or corner, show all pertinent data which can best be shown in a sketch example, corner marking, topography ties, position of accessories, etc.
5. Certification must be signed and sealed by Registered Land Surveyor in State of Montana.
6. Fill in Cross Index & Section Diagram at bottom of sheet.

CERTIFIED CORNER RECORDATION

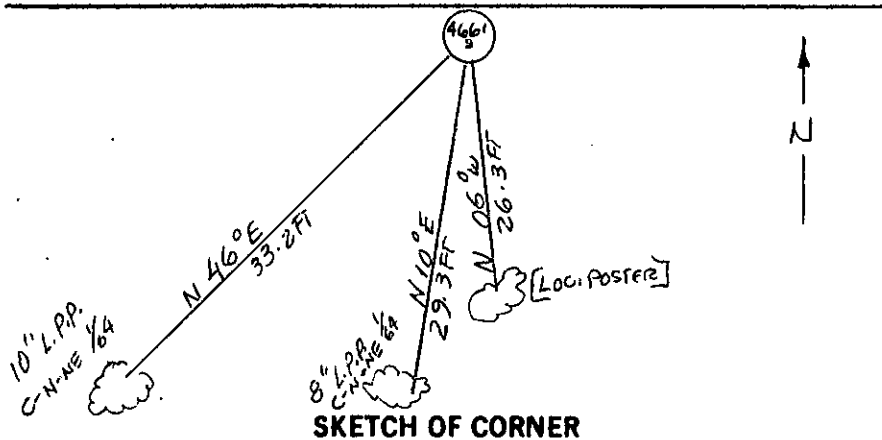
Corner C-N-NE 1/64 Sec. 22 T. 26N R. 29W P.M.M. Lincoln County

Set 5/8" X 24" capped steel pin stamped JHN 4661S

Set 8" Lodge Pole Pine bearing tree scribed C-N-NE 1/64 BT from which the corner bears N 10°E 29.3 ft.

Set 10" Lodge Pole Pine bearing tree scribed C-N-NE 1/64 BT from which the corner bears N 46°E 33.2 ft.

Set a location poster from which the corner bears N 06°W 26.3 ft.



CERTIFICATION

I, David Stanley
 certify the information shown herein is true and correct.
David Stanley
 Signature Ground Party Chief

I, Jack H. Ninneman
 certify that this Corner Record correctly represents work performed by me or under by direction in compliance with the "Corner Recordation Act" (70-22-101, et seq., M.D.A.)
Jack H. Ninneman
 Signature of Surveyor & Seal

Date: _____ Reg. No. 4661S
 Employer: Ninneman Engineering Inc.

Office of Clerk and Recorder, County of LINCOLN. This "corner record" was filed for record on the OCTOBER 20 day of 1983 was noted on the cross-index plat and is assigned page No. 2358, in book No. _____, in Janet B. Siegel by Betty L. Conces County Official deputy

