

## INSTRUCTIONS

1. Original and/or subsequent record used to evaluate the corner position.
2. Description of evidence found, note discrepancies in the record, state method of establishing lost or obliterated corners.
3. Description of monument and accessories set to perpetuate the corner position.
4. Sketch or corner, show all pertinent data which can best be shown in a sketch example, corner marking, topography lies, position of accessories, etc.
5. Certification must be signed and sealed by Registered Land Surveyor in State of Montana.
6. Fill in Cross Index & Section Diagram at bottom of sheet.

## CERTIFIED CORNER RECORDATION

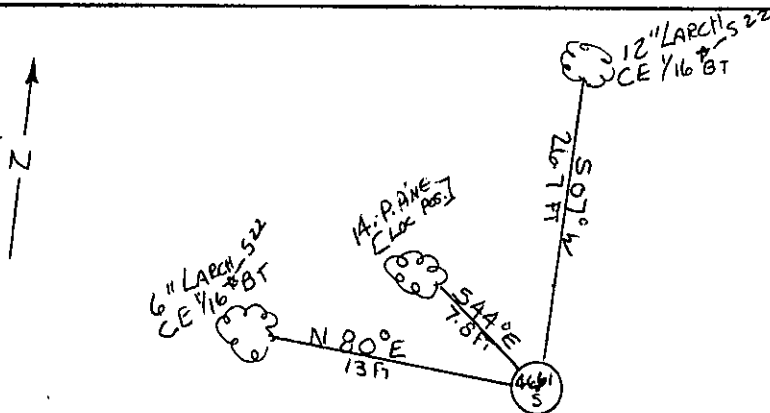
Corner CE 1/16 Sec. 22 T. 26N R. 29W P.M.M. Lincoln County

Set 5/8" X 24" capped steel pin stamped JHN 4661S

Set 12" Larch bearing tree scribed CE 1/16 BT <sup>\* Sec. 22</sup> from which the corner bears S 07° W 26.7 ft.

Set 6" Larch bearing tree scribed CE 1/16 <sup>\* Sec. 22</sup> from which the corner bears N 80° E 13.0 ft.

Set a location poster on a 14" Ponderosa Pine from which the corner bears S 44° E 7.8 ft.



SKETCH OF CORNER

## CERTIFICATION

I, David Stanley

certify the information shown herein is true and correct.

David Stanley

Signature of Ground Party Chief

I, Jack H. Ninneman

certify that this Corner Record correctly represents work performed by me or under my direction in compliance with the "Corner Recordation Act" (70-22-101, et seq., M.D.A.)

Jack H. Ninneman

Signature of Surveyor & Seal

4661S

Date: \_\_\_\_\_ Reg. No. \_\_\_\_\_

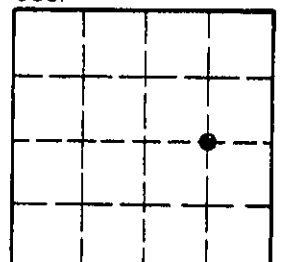
Employer: Ninneman Engineering Inc.

Office of Clerk and Recorder, County of LINCOLN. This "corner record" was filed for record on the OCTOBER 20 day of 1983 was noted on the cross-index plat and is assigned page No. 2357, in book No. \_\_\_\_\_

Janet BF Siegel by Betty L. Conces  
County Official *deputy*

Cross Index No. 22 T. 26N R. 29W PMM

Sec. 22



• - corner this sheet