

## INSTRUCTIONS

1. Original and/or subsequent record used to evaluate the corner position.
2. Description of evidence found, note discrepancies in the record, state method of establishing lost or obliterated corners.
3. Description of monument and accessories set to perpetuate the corner position.
4. Sketch or corner, show all pertinent data which can best be shown in a sketch example, corner marking, topography ties, position of accessories, etc.
5. Certification must be signed and sealed by Registered Land Surveyor in State of Montana.
6. Fill in Cross Index & Section Diagram at bottom of sheet.

## CERTIFIED CORNER RECORDATION

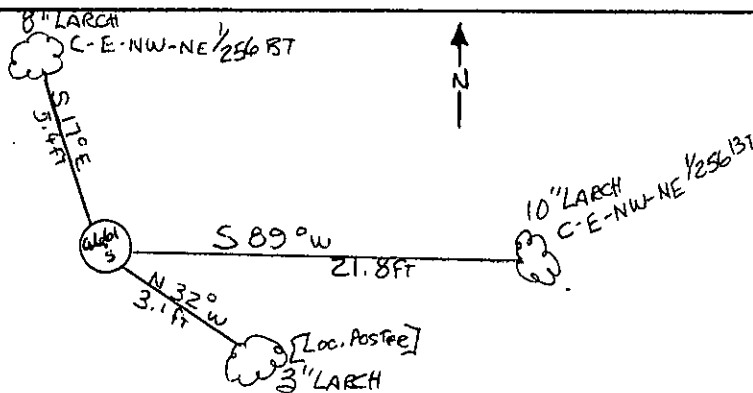
Corner C-E-NW-NE 1/256 Sec. 22 T. 26N R. 29W P.M.M. Lincoln County

Set 5/8" X 24" capped steel pin stamped JHN 4661S

Set 10" Larch bearing tree scribed C-E-NW-NE 1/256 BT from which the corner bears S 89°W 21.8 ft.

Set 8" Larch bearing tree scribed C-E-NW-NE 1/256 BT from which the corner bears S 17°E 5.4 ft

Set a location poster on 3" Larch from which the corner bears N 32°W 3.1 ft.



SKETCH OF CORNER

## CERTIFICATION

I, David Stanley  
certify the information shown herein is true and correct.

David Stanley  
Signature Ground Party Chief

I, Jack H. Ninneman  
certify that this Corner Record correctly represents work performed by me or under my direction in compliance with the "Corner Recordation Act" (70-22-101, et seq., M.D.A.)

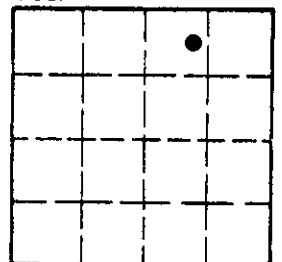
Jack H. Ninneman  
Signature of Surveyor & Seal

Date: \_\_\_\_\_ Reg. No. 4661S

Employer: Ninneman Engineering Inc.

Office of Clerk and Recorder, County of LINCOLN. This "corner record" was filed for record on the OCTOBER 20 day of 1993 was noted on the cross-index plat and is assigned page No. 2356, in book No. \_\_\_\_\_  
Janet BF Siegel by Betty L. Conces  
County Official deputy

Sec. 22



Cross Index No. 22 T. 26N R. 29W P.M.M.

• corner this sheet