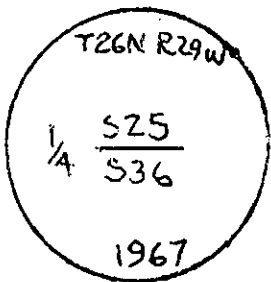


2. Description of evidence, note discrepancies in the record, state method of establishing or obliterated corners.
3. Description of monument and accessories set to perpetuate the corner position.
4. Sketch of corner, show all pertinent data which can best be shown in a sketch example, corner marking, topography ties, position of accessories, etc.
5. Certification must be signed and sealed by Registered Land Surveyor in State of Montana.
6. Fill in Cross Index & Section Diagram at bottom of sheet.

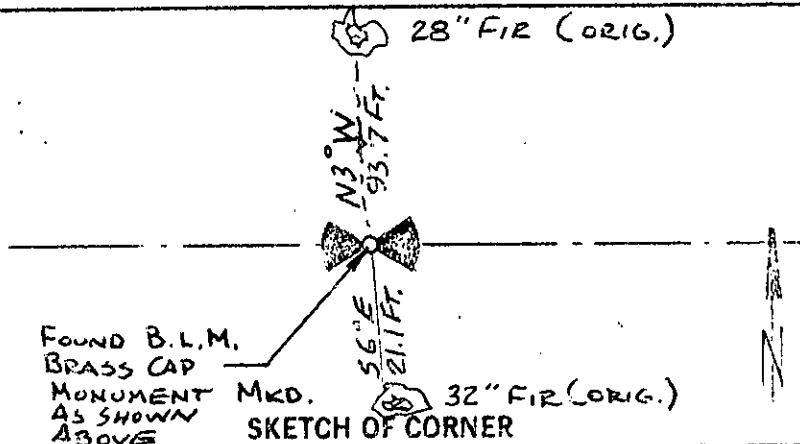
CERTIFIED CORNER RECORDATION

Corner North 1/4 corner Section 36 T. 26N R. 29W P.M.M. Lincoln County

1. 39.90 chains: Top of spur bears NE and SW. Set a limestone, 14 X 8 X 5 inch 10 inches in ground for 1/4 Section corner, marked 1/4 on N. face; from which, a Fir 18 inches diameter, bears S 5°45'E 32 Links distance; marked 1/4 S 36 B.T. A Fir 12 inches diameter, bears N 3°20'W., 142 links distance marked 1/4 S25 B.T.
2. Found . BLM brass cap marked as shown below from which (an original bearing tree) a Fir now 28 inches diameter bears N 3°W 93.7 feet and a Fir (also original) 32 inches diameter, bears S 6°E 21 feet both trees posted.
3. I painted monument and accessories with bright red paint.



Found B.M brass capped monument marked as shown.



CERTIFICATION

I, Jack H. Ninneman
 certify the information shown herein to be true and correct.

Jack H. Ninneman
 Signature Ground Party Chief

I, Jack H. Ninneman
 certify that this Corner Record correctly represents work performed by me or under my direction in compliance with the "Corner Recordation Act" (70-22-101, et seq., M.D.A.)

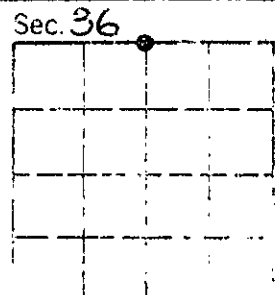
Jack H. Ninneman
 Signature of Surveyor & Seal

Date: 8/27/81 Reg. No. 4661S

Employer: _____

Office Clerk and Recorder, County of Lincoln. This "corner record" was filed for record on the December 7th day of 1981 was noted on the cross-index plat and is assigned page No. 1420, in book No. _____

Eleanor L. Wagner by Betty L. Conner
 County Official Deputy



Cross Index No. V-23 T. 26N R. 29W P.M.M.

• corner this s