

CERTIFIED CORNER RECORDATION

Corner Center Quarter Section Corner, Section 10 T. 26 N. R. 29 W. P.M.M. Lincoln County

1971 Certified Land Corner Recordation by Jack H. Ninneman 534ES
"Brass cap monument by Ninneman Engineering from which
A 10" Fir bears N 1° E 19.9 feet - A 36" pine bears S 88° 40' E 4.0 feet.
Both scribed and posted."

2014 Monumentation by M. J. Drenth 10684LS:
I do not accept the Ninneman monument for the Center Quarter Section corner of Section 10 as it was
determined from an incorrect position for the East Quarter Section corner of Section 10.

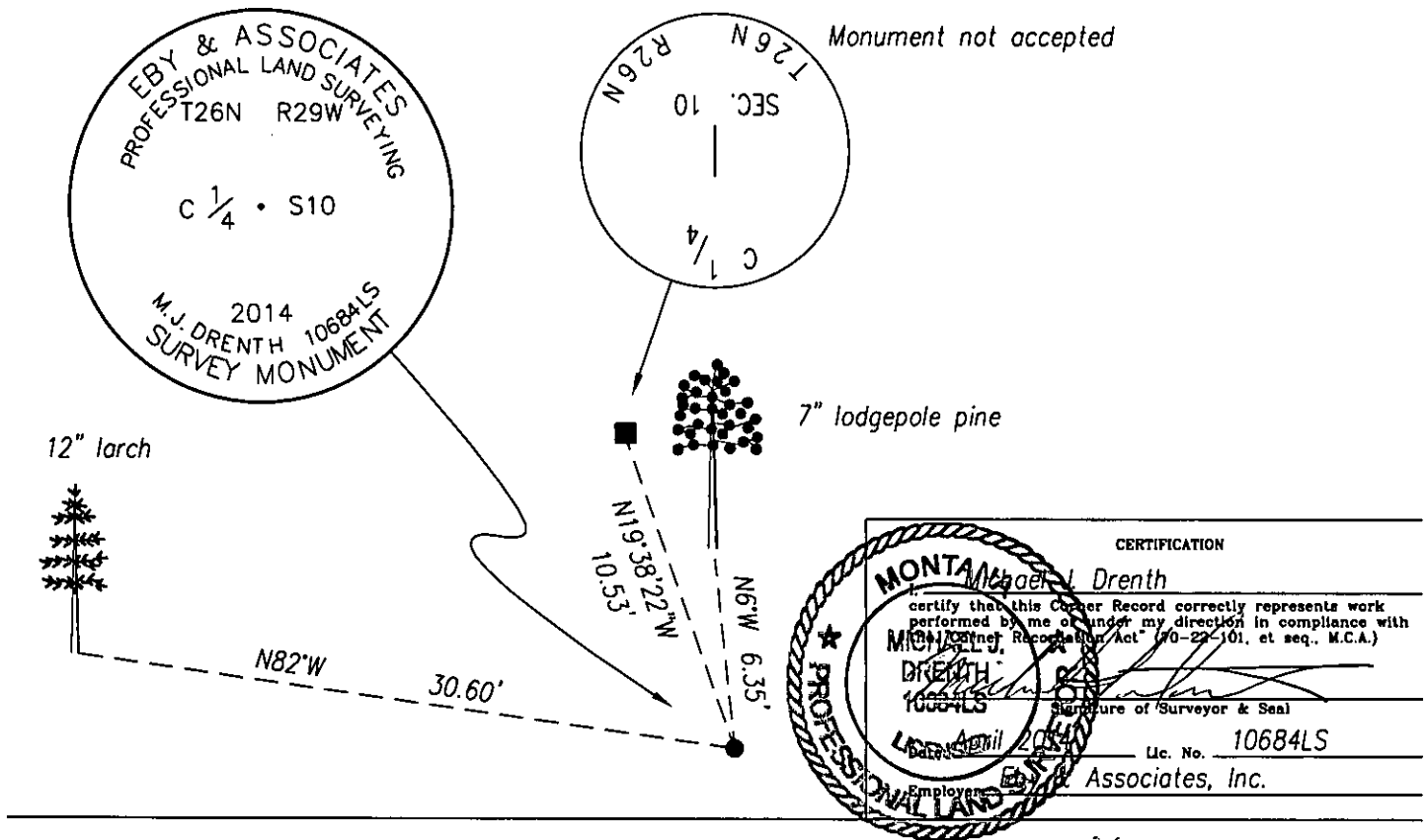
At the intersection of the lines between the East and West Quarter Section corners and the North and South
Quarter Section corners, I set an aluminum pipe, 1 inch diameter, 32 inches long, 25 inches in the ground,
with 3 1/4 inch diameter aluminum cap, marked as shown, and set in a 2 foot diameter stone collar.

From which I establish the two new bearing trees and reference the brass cap monument by Ninneman:

- A larch, 12 inches diameter, bears N. 82° W., 30.60 feet distant, scribed "C1/4 S10 BT".
- A lodgepole pine, 7 inches diameter, bears N. 6° W., 6.35 feet distant, scribed "X" and "BT".
- A 2 inch diameter galvanized steel pipe with 2.5 inch diameter brass cap marked as shown,
bears N. 19°38'22" W., 10.53 feet distant.

I attach Land Survey Monument signs to both new bearing trees.
I axe snow blazes on both new bearing trees.
All bearings to trees measured with Silva hand compass (14 1/2° east magnetic declination).
All distances to trees measured with steel tape.
Bearing and distance to Ninneman monument measured with total station instrument.

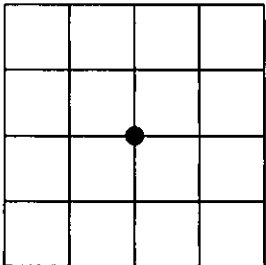
See Certificate of Survey No. 4276RB for section breakdown, basis of bearings, and ties to adjoining controlling
section corners.



Office of Clerk and Recorder, County of Lincoln . This "corner
record" was filed for record c 252146 BOOK: CCR CC&R'S - PAGE: 12123 Pages: 1
was noted on the cross-index: STATE OF MONTANA LINCOLN COUNTY
RECORDED: 07/03/2014 9:50 KOI: CC&R'S
TAMMY D. LAUER CLERK AND RECORDER
FEE: \$0.00 BY: Glennie Draney
FOR: FILED
Cross Index No. G - 15 T. 26N R. 29W PMM

Adopted July 1, 1981, Montana Board of Professional Engineers & Land Surveyors

Sec. 10



• corner this sheet