

# CERTIFIED CORNER RECORDATION

Corner Center East Sixteenth Corner, Section 10 T. 26 N. R. 29 W. P.M.M. Lincoln County

1971 Certified Land Corner Recordation by Jack H. Ninneman 534ES

"Brass cap monument by Ninneman Engineering from which -  
A 20" Larch bears N 72° E 19 feet - A 16" Fir bears S 8° E 18.0 feet.  
Both scribed and posted."

2014 Monumentation by M. J. Drenth 10684LS:

I do not accept the Ninneman monument for the Center - East sixteenth corner of Section 10 as it was determined from an incorrect position for the East Quarter Section corner of Section 10.

At the mid-point of the line between the East Quarter Section corner and the Center Quarter Section corner I set an aluminum pipe, 1 inch diameter, 32 inches long, 32 inches in the ground, with a 3 1/4 inch diameter aluminum cap, marked as shown.

From which I establish two new bearing trees and reference the brass cap monument by Ninneman:

- A larch, 14 inches diameter, bears S. 54° E., 21.40 feet distant, scribed "CE 1/16 S10 BT".
- A Douglas fir, 7 inches diameter, bears N. 8° W., 14.00 feet distant, scribed "X" and "BT".
- A 2 inch diameter galvanized steel pipe with 2.5 inch diameter brass cap marked as shown, bears N. 72°04'27" W., 47.98 feet distant.

I attach Land Survey Monument signs to both new bearing trees.

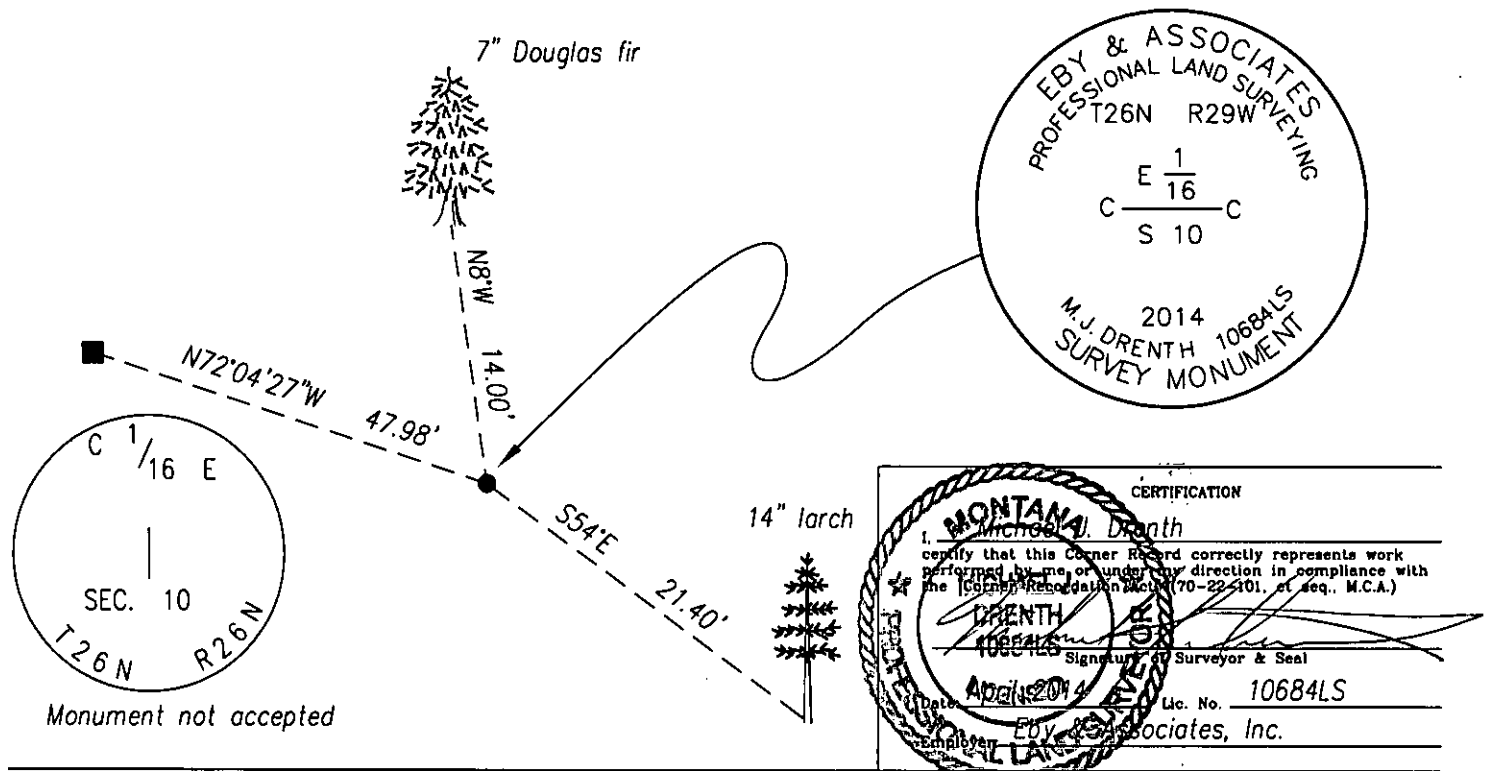
I axe snow blazes on both new bearing trees.

All bearings to trees measured with Silva hand compass (14 1/2° east magnetic declination).

All distances to trees measured with steel tape.

Bearing and distance to Ninneman monument measured with total station instrument.

See Certificate of Survey No. 4276RB for section breakdown, basis of bearings, and ties to adjoining controlling section corners.



Office of Clerk and Recorder, County of Lincoln . This "corner

record" was filed for record

was noted on the cross-index

book No. \_\_\_\_\_

252145 BOOK: CCR CC&R'S PAGE: 12122 Pages: 1

STATE OF MONTANA LINCOLN COUNTY

RECORDED: 07/03/2014 9:45 KOI: CC&R'S

TAMMY D. LAUER CLERK AND RECORDER

FEE: \$0.00

FOR: FILED

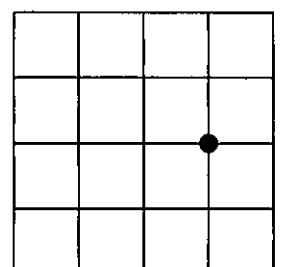
BY:

*Deanna Chapin*  
Deputy

Cross Index No. G - 16 T. 26N R. 29W P.M.M.

Adopted July 1, 1981, Montana Board of Professional Engineers & Land Surveyors

Sec. 10



• corner this sheet