

Corner C 1/16 100 S2 T. 26 N. R. 29 W. P.M.M. LINCOLN County

- I. No record of any previous surveys found for this corner.
- II. No record or evidence of any monument previously set for this corner.
- III. At the position for this corner determined by survey, set a 5/8 in. diam. rebar, 24 ins. long, with a 3 1/4 in. diam. U.S.D.A aluminum cap flush with the ground and marked as shown below. Establish 2 new bearing trees:
  - A pine, 5 ins. diam., bears N15°E, 53.0 ft. dist., mkd. "X" BT.
  - A pine, 5 ins. diam., bears N89°E, 69.3 ft. dist., mkd. C 1/16 100 S2 BT.

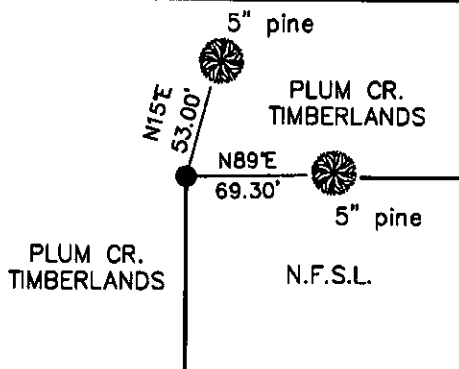
Painted the scribed faces red and 6 in. wide red bands around the bearing trees. Attached Land Survey Monument and Bearing Tree signs. Set a 6 ft. steel guard post 3 ft. South & East with Property Boundary and Land Survey Monument decals attached. This corner is located in the burned area of the 1984 Houghton Creek fire and was extensively logged after the fire. Only a very few small trees were available for bearing trees at this time.

LAT 48°03'01.10706"N  
 LONG 115°18'03.24435"W  
 NAD 83



Date of Fieldwork: 10/11/2011  
 Survey crew: Tom Hommel  
 Magnetic declination: 20' East assumed  
 Equipment used: Hand compass and loggers tape

U.S. Forest Service, Supervisors Office, 31374 Hwy. 2, Libby, MT 59923 (406) 293-6211



NOT TO SCALE

CERTIFICATION  
 MONTANA  
 I, Thomas Hommel, 0800LS  
 certify the information shown here is true and correct.  
 MARCH 15 2012  
 \* Signatory is a Registered Party Officer  
 I, Marc Burkhardt, 9520LS  
 certify that this Corner Record correctly represents work performed by me or a Registered Party Officer in compliance with the "Corner Recognition Act" (7-2-10) et seq., M.C.A.  
Marc Burkhardt  
 Signature of Surveyor & Seal  
 Date: 2/7/2012 Reg. No. 9520LS  
 Employer: U. S. Forest Service

Office of Clerk and Recorder, County of Lincoln

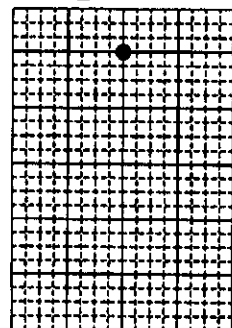
237367 BOOK: CCR CC&R'S PAGE: 11952 Pages: 1  
 STATE OF MONTANA LINCOLN COUNTY  
 RECORDED: 02/22/2012 9:45 KOI: CC&R'S  
 TAMMY D. LAUER CLERK AND RECORDER  
 FEE: \$0.00 BY: Leanne Dennis  
 TO: FILED Deputy

A/B 19

Cross Index No. C 1/16 100 S2 T. 26N. R. 29W. P.M., MT

Adopted July 1, 1981, Montana Board of Professional Engineers & Land Surveyors

Sec. 2



● corner this sheet