

Corner E 1/16 100 S2 T. 26 N. R. 29 W. P.M.M. LINCOLN County

- I. No record of any previous surveys found for this corner.
- II. No record or evidence of any monument previously set for this corner.
- III. At the position for this corner determined by survey, set a 5/8 in. diam. rebar, 24 ins. long, with a 3 1/4 in. diam. U.S.D.A aluminum cap flush with the ground and marked as shown below. Establish 2 new bearing trees:

A pine, 13 ins. diam., bears N15°E, 69.3 ft. dist., mkd. E 1/16 100 S2 BT.

A pine, 18 ins. diam., bears S70°E, 137.9 ft. dist., mkd. E 1/16 100 S2 BT.

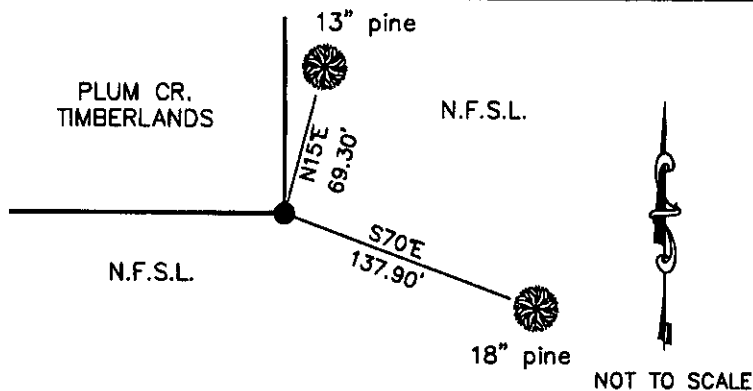
Painted the scribed faces red and 6 in. wide red bands around the bearing trees. Attached Land Survey Monument and Bearing Tree signs. Set a 6 ft. steel guard post 3 ft. North & West with Property Boundary and Land Survey Monument decals attached. This corner is located in the northerly half of the power line right of way clearing.

LAT 48°03'01.04470"N  
LONG 115°17'43.78493"W  
NAD 83



Date of Fieldwork: 10/11/2011  
Survey crew: Tom Hommel  
Magnetic declination: 20° East assumed  
Equipment used: Hand compass and loggers tape

U.S. Forest Service, Supervisors Office, 31374 Hwy. 2, Libby, MT 59923 (406) 293-6211



**CERTIFICATION**  
I, Thomas MONTANA, 9800LS  
certify the information shown herein is true and correct.  
MARC M. BURKHART  
Signature of Surveyor  
I, Marc Burkhardt, 9520LS  
certify that this Corner Record correctly represents work performed by me or under my direction in compliance with the "Corner Recordation Act" (70-2201 1st seq., M.C.A.)  
Marc Burkhardt  
Signature of Surveyor  
Date: 2/7/2012 Reg. No. 9520LS  
Employer: U. S. Forest Service

Office of Clerk and Recorder, County of Lincoln

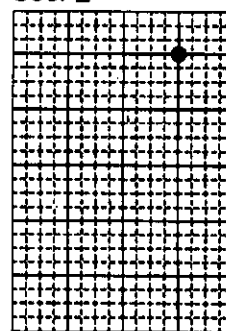
237366 BOOK: CCR CC&R'S PAGE: 11951 Pages: 1  
STATE OF MONTANA LINCOLN COUNTY  
RECORDED: 02/22/2012 9:40 KOI: CC&R'S  
TAMMY D. LAUER CLERK AND RECORDER  
FEE: \$0.00 BY: Jeanne Durr  
TO: FILED

A/B 20

Cross Index No. E 1/16 100 S2 T. 26N. R. 29W. P.M., MT

Adopted July 1, 1981, Montana Board of Professional Engineers & Land Surveyors

Sec. 2



● corner this sheet