

Corner WC C 1/4 S2 T. 26 N. R. 29 W. P.M.M. LINCOLN County

- I. No record of any previous surveys found for this corner.
- II. No record or evidence of any monument previously set for this corner.
- III. At the position for the witness corner as determined by survey, set a 5/8 in. diam. rebar, 24 ins. long, with a 3 1/4 in. diam. U.S.D.A aluminum cap flush with the ground and marked as shown below. Establish 2 new bearing trees:

A Lodgepole pine, 8 ins. diam., bears N38°E, 31.3 ft. dist., mkd. C 1/4 S2 WC BT.
A Lodgepole pine, 6 ins. diam., bears N34°W, 17.4 ft. dist., mkd. C 1/4 S2 WC BT.

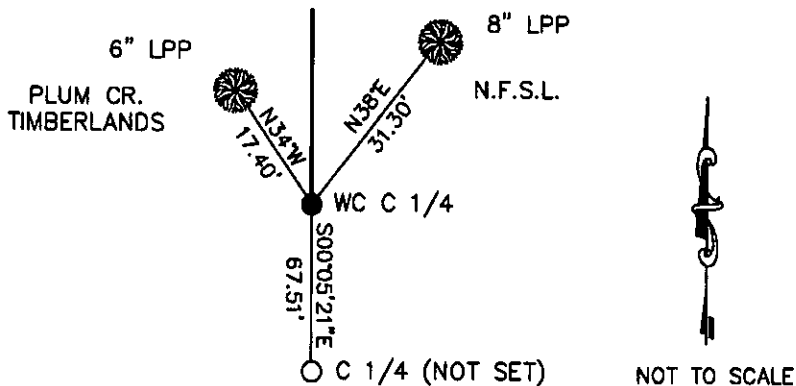
Painted the scribed faces red and 6 in. wide red bands around the bearing trees. Attached Land Survey Monument and Bearing Tree signs. Set a 6 ft. steel guard post 3 ft. North with Property Boundary and Land Survey Monument decals attached. The true position for the C 1/4 cor. is located in the centerline of the eastbound lane of U.S. Hwy 2.

LAT 48°02'22.67342"N
LONG 115°18'03.15980"W
NAD 83



Date of Fieldwork: 10/20/2011
Survey crew: Tom Hommel
Magnetic declination: 20° East assumed
Equipment used: Hand compass and loggers tape

U.S. Forest Service, Supervisors Office, 31374 Hwy. 2, Libby, MT 59923 (406) 293-6211



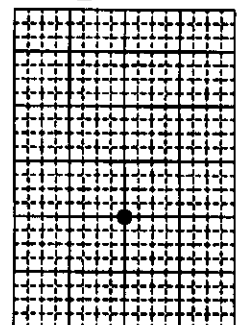
CERTIFICATION
I, Thomas Hommel, 10800LS
certify the information shown herein is true and correct.
Marc Burkhardt, 9520LS
Signature of Ground Party Chief
I certify that this Corner Record correctly represents work performed by me or under my direction in compliance with the "Corner Recordation" rules, 101-101, et seq., M.C.A.)
Marc Burkhardt
Signature of Surveyor
Date: 2/7/2012 Reg. No. 9520LS
Employer: U. S. Forest Service

Office of Clerk and Recorder, County of Lincoln

237365 BOOK: CCR CC&R'S PAGE: 11950 Pages: 1
STATE OF MONTANA LINCOLN COUNTY
RECORDED: 02/22/2012 9:35 KOI: CC&R'S
TAMMY D. LAUER CLERK AND RECORDER
FEE: \$0.00 BY: Leanne Stearns
TO: FILED Chapman

Cross Index No. WC C 1/4 S2 C19 T. 26N. R. 29W. P.M., MT
Adopted July 1, 1981, Montana Board of Professional Engineers & Land Surveyors

Sec. 2



● corner this sheet