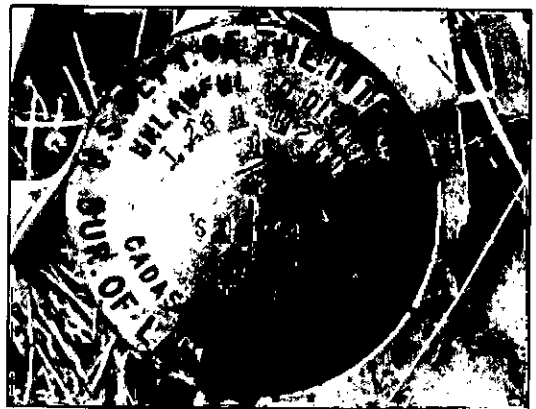


Corner 1/4 3|2 T. 26 N. R. 29 W. P.M.M. LINCOLN County

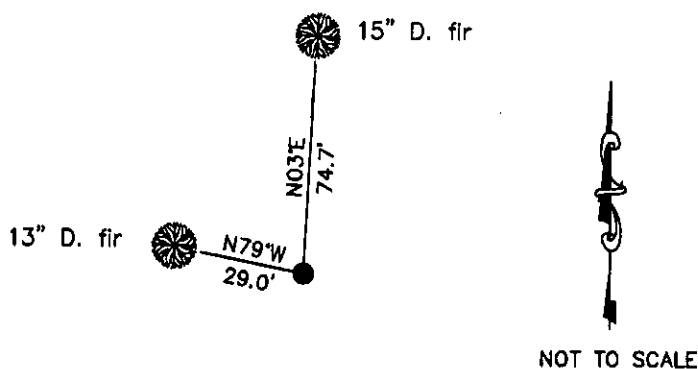
- I. 1903 Subdivision of T27N, R29W by Charles H. Albee & William K. Trippet: Set a sandstone, 14x10x5 ins., 10 ins. in the ground and 2 bearing trees.
1964 BLM Remonumentation by Richard L. Larimer & Harold W. Grusing: Found original stone firmly set and replaces stone with a iron post, 30 ins. long, 2 1/2 ins. diam., 24 ins. in the ground with brass cap. Found stumpholes and remains of original bearing trees. Establishes 2 new bearing trees.
A fir, 12 ins. diam., bears S85°E, 43 lks. dist., mkd. 1/4 S2 BT.
A fir, 9 ins. diam., bears S87°W, 44 lks. dist., mkd. 1/4 S3 BT.
NOTE: A 1970 corner card by A. R. Trenkle and Joseph French states the 1964 BLM monument was found lying on the ground with the original corner found underground. Also states that the bearing for the S3 BT was wrong and the compass had been read backwards. It appears the 1964 monument was reset and remarked with 1970 as follows.
1970 BLM Remonumentation by Joseph E. French: Remonumenting a corner on the subdivisional lines established by Paul S. A. Bickel in 1898 and remonumented by Harold W. Grusing in 1964.
The 1/4 sec. cor. of secs. 2 and 3, as determined from the remains of the original bearing trees, as described in the field notes of the 1964 remonumentation:
A fir stump, 12 ins. diam, bears S85°E, 43 lks. dist., mkd. 1/4 S2 BT.
A fir, 9 ins. diam, bears N79°W, 44 lks. dist., mkd. 1/4 S3 BT. (Record: S87°W)
At the corner point:
Set an iron post 30 ins. long, 2 1/2 ins. diam., 24 ins. in the ground with brass cap. (See below).
From which a new bearing tree:
A fir, 8 ins. diam, bears N3°E, 113 lks. dist., mkd. 1/4 S2 BT.
1981-1984 C.O.S.'s 935, 975, 1019 & 1267 by Albert Putnam, Mt. Reg. No. 4375S: Found BLM Brass cap.
1989 Certified Corner Recordation by Dwight L. Axelsen, MT Reg. No. 08641LS: Finds the BLM monument and accessories as stated in the 1970 BLM record. Also incorrectly sites a 1978 BLM Remonumentation by Christainsen. (I found no record of this remonumentation by Christainsen)
- II. Found: A 2 1/2 in diam. iron pipe, firmly set in a collar of stone, with 3 1/4 in. diam. BLM brass cap 3 ins. above ground, mkd. as show below, from which:
A Douglas fir, 15 ins. diam., bears N3°E, 74.7 ft. dist., mkd. with a healed face.
A Douglas fir, 13 ins. diam., bears N79°W, 29.0 ft. dist., mkd. with a healed face.
- III. Painted the scribed faces red and 6 in. wide red bands around the bearing trees. Attached Land Survey Monument and Bearing Tree signs.

LAT 48°02'22.15389"N
LONG 115°18'41.55715"W
NAD 83



Date of Fieldwork: 4/27/2011
Survey crew: Tom Hommel
Magnetic declination: 20° East assumed
Equipment used: Hand compass and loggers tape

U.S. Forest Service, Supervisors Office, 31374 Hwy. 2, Libby, MT 59923 (406) 293-6211



CERTIFICATION
I, Thomas Hommel, 30800LS
certify the information shown herein is true and correct.
MARC BURKHEAD
★ Signatory Party
I, Marc Burkhead, 9520LS
certify that this Corner Record correctly represents work performed by me or under my direction in compliance with the "Corner Recordation Act" (72 Stat. 10, et seq., M.C.A.)
Marc Burkhead
Signature of Signatory Seal
Date: 2/1/2012 Reg. No. 9520LS
Employer: U. S. Forest Service

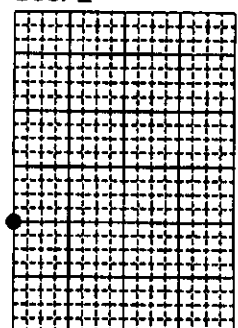
Office of Clerk and Recorder, County of Lincoln

237364 BOOK: CCR CC&R'S PAGE: 11949 Pages: 1
STATE OF MONTANA LINCOLN COUNTY
RECORDED: 02/22/2012 9:30 KOI: CC&R'S
TAMMY D. LAUER CLERK AND RECORDER
FEE: \$0.00 BY: Leanne Lerner
TO: FILED

Cross Index No. C 17 T. 26N. R. 29W. P.M., MT

Adopted July 1, 1981, Montana Board of Professional Engineers & Land Surveyors

Sec. 2



● corner this sheet