

Corner 1/4 2 | 1 T. 26 N. R. 29 W. P.M.M. LINCOLN County

I. 1903 Subdivision of T26N, R29W by Charles H. Albee & William K. Trippet: Set a sandstone, 12x10x6 ins., 8 ins. in the ground and 2 bearing trees.

A alder, 6 ins. diam., bears N56°10'E, 16 lks. dist., mkd. 1/4 S1 BT.

A pine, 10 ins. diam., bears N80°45'W, 92 lks. dist., mkd. 1/4 S2 BT.

1964 BLM Remonumentation by Richard L. Larimer & Harold W. Grusing: The 1/4 sec. cor. for secs. 1 and 2, monumented with a steel pipe, 3 ft. long, 1 1/2 ins. diam., firmly set and witnessed by one of the original bearing trees. At the corner point, set an iron post, 30 ins. long, 2 1/2 ins. diam., 27 ins. in the ground, with brass cap. From which the original bearing tree:

A pine, 10 ins. diam., bears N80 3/4°W, 94 lks. dist., mkd. with an overgrown blaze.

(Rec.: 92lks.)

The new bearing tree:

A fir, 7 ins. diam., bears N40°W, 113 lks. dist., mkd. 1/4 S2 BT.

Bury the steel pipe alongside of the iron post

1981 C.O.S. #935 by Albert P. Putnam, MT Reg. No. 4375S: Sets a 5/8 in. rebar and cap by tying into bearing tree. Subsequent C.O.S.'s No's. 975, 1019 & 1267 by Putnam finds the same rebar and cap.

1990 Certified Corner Recordation by Dwight L. Axelsen, MT Reg. No. 08641LS: Finds the 1903 GLO pine bearing tree with visible marks and the 1964 BLM bearing tree which is a burnt stump with no marks visible. Sets a 2 1/2 in. diam. aluminum cap on an aluminum pipe, set 2 ft. in a gravel bar of the Fisher River with concrete used for fill around the pipe. Placed a new BT tag on the pine and a BT tag on the last wood rail fence post 15.5 ft. from monument.

II. Found: A 2 1/2 in diam. aluminum cap, firmly set flush with the ground, mkd. as shown below, from which:

A Ponderosa pine, 26 ins. diam., bears N81°W, 61.2 ft. dist., mkd. with a chopped face and visible scribe marks.

A fir stump, 12 ins. diam., bears N39°W, 75.8 ft. dist., with visible scribe marks.

III. Note: After a careful search, the previously mentioned steel pipe, 5/8 in. rebar and BLM brass cap were not found. According to the Axelsen corner recordation, he set the monument at the GLO record bearing and distance from the found GLO Ponderosa pine bearing tree. Our measurements using the record distances from the found GLO Ponderosa pine and the found BLM stump place the corner in a slightly different location, but within an acceptable proximity to the found monument. Therefore I accept the found Axelsen monument and perpetuate the corner as follows.

Established 1 new bearing tree

A pine, 7 ins. diam., bears N26°E, 81.7 ft. dist., mkd. 1/4 S1 BT.

Painted the scribed faces red and 6 in. wide red bands around the bearing trees.

Attached Land Survey Monument and Bearing Tree signs. Set a 6 ft. steel guard post North, 3 ft. with Land Survey Monument and Property Boundary decal attached.

LAT 48°02'21.85496"N
LONG 115°17'24.21380"W
NAD 83

12 in. BLM bearing tree
fir stump with a partial 2
visible



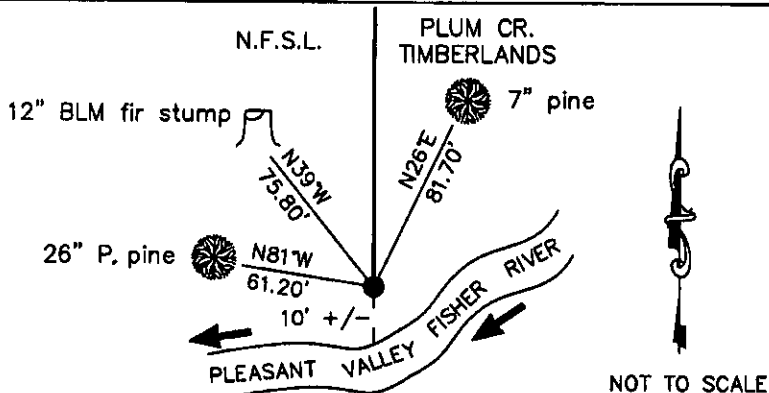
Date of Fieldwork: 4/26/2011

Survey crew: Tom Hommel

Magnetic declination: 20° East assumed

Equipment used: Hand compass and loggers tape

U.S. Forest Service, Supervisors Office, 31374 Hwy. 2, Libby, MT 59923 (406) 293-6211



CERTIFICATION
I, Thomas M. Hommel 10800LS
certify this information is true and correct
Signature: Thomas M. Hommel Party: Client
I, Marcus Burkhardt 0520LS
certify that this Corner Recordation correctly represents work
performed by me or under my direction in compliance with
the "Corner Recordation Act" (70-27-101, et seq., M.C.A.)
Signature: Marcus Burkhardt Party: Surveyor
Date: 2/7/2012
Employer: U. S. Forest Service

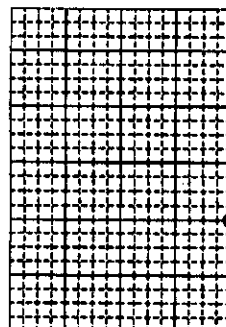
Office of Clerk and Recorder, County of Lincoln

237362 BOOK: CCR CC&R'S PAGE: 11947 Pages: 1
STATE OF MONTANA LINCOLN COUNTY
RECORDED: 02/22/2012 9:20 KOI: CC&R'S
TAMMY D. LAUER CLERK AND RECORDER
FEE: \$0.00 BY Deanna Denny
TO: FILED

Cross Index No. C 21 T. 26N. R. 29W. P.M., MT

Adopted July 1, 1981, Montana Board of Professional Engineers & Land Surveyors

Sec. 2



● corner this sheet