

1. Original and/or subsequent record used to evaluate the corner position.
2. Description of evidence found, note discrepancies in the record, state method of establishing lost or obliterated corners.
3. Description of monument and accessories set to perpetuate the corner position.
4. Sketch of corner, show all pertinent data which can best be shown in a sketch example, corner marking, topography ties, position of accessories,
5. Certification must be signed and sealed by Land Surveyor registered in the State of Montana.

CERTIFIED CORNER RECORDATIONCorner: Section Corner; Secs. 11,12,13&14T. 26N.R. 29W. P.M.M. Lincoln County

1903 GLO Record: Set sandstone. Established 4 bearing trees.

1978 BLM Record: Found stone & 3 bearing trees.

Set an iron post, 30 ins. long, 2 1/2 ins. diam., 22 ins. in the ground with brass cap, from which:
Original bearing trees:

A fir stump, 14 ins. diam., bears S64 3/4°W, 20 lks. (13.2')

A fir snag, 18 ins. diam., bears N59°W, 22 lks. (14.5')

New bearing trees:

A larch, 10 ins. diam., bears N56°E, 60lks (39.6 ft.), marked T26N R29W S13 BT

A larch, 7 ins. diam., bears S50°E, 14 lks (9.2 ft.), marked T26N R29W S13 BT

A fir, 12 ins. diam., bears S34°W, 30 lks (19.8 ft.), marked T26N R29W S14 BT

A larch, 10" diam., bears N07 1/2°W, 13 lks (8.6 ft.), marked T26N R29W S11 BT

Location poster, bears S15E°, 20 lks (13.2 ft.)

Buried orig. stone along side pipe and raised a collar of stone 2-1/2 ft. dia. around pipe.

1985 Record:
(Hill)Found BLM brass cap, 9" above the ground & 4 bearing trees, dead due to Houghton
Creek fire.

Set guard post w/ survey decal, 3.0 ft. east from corner.

Painted red bands & attached BT tags to the dead bearing trees.

2005 Record:
Hughes

Found 3-1/4" BLM brass cap, firmly set, 6" above the ground w/ rock collar.

4 dead bearing trees

New bearing tree:

A 13" fir, bears S57°E, 27.4 ft., marked T26N R29W S13 BT

Set Steel post w/ survey decals 3.0 ft., west of corner.

2009 Found:

We find a standard BLM monument with a 3 1/4" brass cap, firmly set in good condition, 12"
above the ground, marked as shown below, from which:

A 10" dead, standing, larch, bears N56°E, 39.6 ft., scribing partially visible & BT tag

A 16" live, fir, bears S57°E, 27.4 ft., scribing visible & BT tag

A 7" dead, standing, larch, bears S50°E, 9.2 ft., scribing partially visible & BT tag

A 12" dead, standing, fir, bears S34°W, 19.8 ft., scribing partially visible & BT tag

A 10" dead, standing, larch, bears N07°30'W, 8.6 ft., scribing partially visible & BT tag

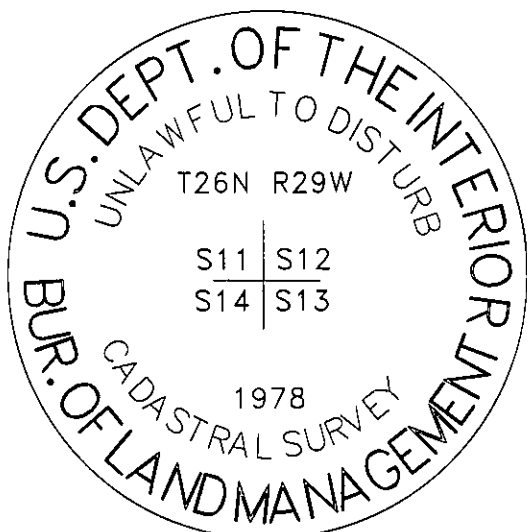
Steel post with survey decals, bears west, 3.0 ft.

2009 Perpetuation:

From the found monument we establish the following reference monument:

A 16" Douglas fir, bears S07°W, 46.5 ft., scribed T26N R29W S14 BT

We paint red bands on the existing bearing trees, and attached USFS signs 54-3 & 54-9.

SEE COS NO. 3990**SKETCH OF CORNER****CERTIFICATION**I, Chad R. Breuer
certify the information shown herein is true and
correct.Chad R. Breuer
Signature Ground Party ChiefI, Ken E Jenkins
certify that this Corner Record correctly
represents work performed by me or under my
direction in compliance with the "Corner
Recordation Act" (70-22-101, et seq., M.C.A.)Ken E Jenkins
Signature of Surveyor & SealDate: 8/2009 Reg. No. 9330 LSEmployer: Montana Northwest CompanyPO Box 8777, Missoula, MT 59807406-721-4033 Project No. 1617-09

Office of Clerk and Recorder, County of _____ This "corner

record" was filed for record on 224839 BOOK: CCR CC&R'S PAGE: 11465 Pages: 1was noted on the cross-index pl: STATE OF MONTANA LINCOLN COUNTYbook No. _____ TAMMY D. LAUER CLERK AND RECORDER

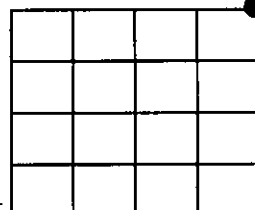
FEE: \$0.00

BY: Ken E Jenkins

TO: MONTANA NORTHWEST COMPANY P.O. BOX 8777, MISSOULA, MONTANA

Cross Index No. J-21 T. 26N R. 29W PMM

Sec. 14



● Corner this sheet