

CERTIFIED CORNER RECORDATION

Corner SW COR. S33 T. 26 N. R. 29 W. P.M.M. LINCOLN County

- I. Record: 1903 original GLO survey by C. Albee and W. Trippet, set a limestone 14x10x5 ins., 10 ins. in the ground, mkd. with 4 notches on E., and 2 notches on the W. edge; from which:
- A pine, 6 ins. diam., bears N.27°5'E., 32 lks. dist., mkd. T26N R29W S33 BT.
 - A pine, 6 ins. diam., bears S.30°45'E., 18 lks. dist., mkd. T25N R29W S4 BT.
 - A pine, 26 ins. diam., bears S.12°W., 85 lks. dist., mkd. T25N R29W S5 BT.
 - A pine, 5 ins. diam., bears N.50°W., 8 lks. dist., mkd. T26N R29W S32 BT.

1916 GLO Resurvey of the North Boundary of T.25N., R.29W., by F. Walters."The old corner of secs, 4,5,32 and 33, which is a limestone, 8x8x6 ins. above ground, firmly set. Hereafter this cor. will refer to secs. 32 and 33, T.26N., R.29W. only. I therefore destroy the two bearing trees on the South side of the line."

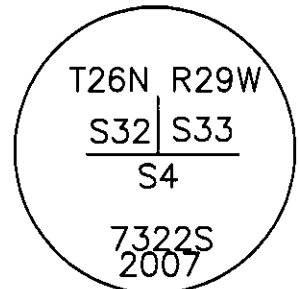
1993 Certified Corner Recordation by Sands Surveying, Found a mound of stone with part of original stone. A few notches visible. Set a rebar 5/8 in. diam., with P.V.C Surv. cap mkd. 7975S.

- II. Found: A 5/8 in. diam. rebar capped SANDS 7975S in a mound stone from which:
- A pine, 7 ins. diam., bears N. 85°E., 3.77 ft. dist.
 - A pine, 6 ins. diam., bears N. 5°W., 10.65 ft. dist.

- III. Perpetuation: Replace P.V.C cap with a 3 1/4 ins. diam. Aluminum cap stamped as shown below.
- Blaze and scribe existing bearing trees
 - Painted faces and 6 in. wide red bands to all bearing trees and attached bearing tree and Land Survey Monument signs where needed.
 - Set a steel post on line 3.00 ft. East of corner with attached Land Survey and Property Boundary stickers.

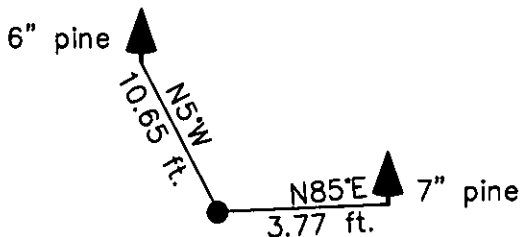
Magnetic declination: 18° East

Equipment used: Hand compass and loggers tape



Kootenai Surveyors Inc., 314 California Av., Libby, MT. 59923 (406) 293-4354

OWL CR. - PCTC



SKETCH OF CORNER

CERTIFICATION

I, Levi Powell
certify the information shown herein is true and correct.

Levi Powell
Signature Ground Party Chief

I, Alvah F. Hughes
certify that this Corner Record correctly represents work performed by me or under my direction in compliance with the Corner Recordation Act (70-22-101, et seq., M.C.A.)

Alvah F. Hughes
Signature of Surveyor & Seal

Date: 9/6/2007 Reg. No. 7322-LS

Employer: Kootenai Surveyors Inc.

Office of Clerk and Recorder, County of Lincoln This "corner

record" was filed for record 206396 BOOK: CCR CC&R'S PAGE: 11118 Pages: 1

was noted on the cross-1 STATE OF MONTANA LINCOLN COUNTY

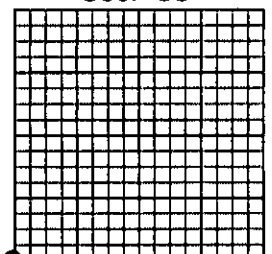
book No. RECORDED: 10/02/2007 10:00 KOI: CC&R'S

TAMMY D. LAUER CLERK AND RECORDER
FEE: \$0.00 BY: *Tammy D. Lauer*
TO: KOOTENAI SURVEYORS INC. P.O. BOX 393, LIBBY, MT 59923

Cross Index No. Z 09 T. 26N R. 29W P.M., MT

Adopted July 1, 1981, Montana Board of Professional Engineers & Land Surveyors

Sec. 33



• corner this sheet