

CERTIFIED CORNER RECORDATION

Corner S 1/4 COR. S33 T. 26 N. R. 29 W. P.M.M. LINCOLN County

I. Record: 1903 original GLO survey by C. Albee and W. Trippet, set a limestone 14x10x5 ins., 10 ins. in the ground, marked 1/4 on the N. face; from which:

A pine, 6 ins. diam., bears N.21°30'E., 40 lks. (26.40 ft.) dist., mkd. 1/4 S33 BT.
A pine, 8 ins. diam., bears S.59°40'W., 24 lks. (15.84 ft.) dist., mkd. 1/4 S4 BT.

1916 GLO Resurvey of the North Boundary of T.25N., R.29W., by F. Walters." The old 1/4 sec. cor., which is a limestone 8x8x6 ins. above ground, firmly set. I will refer to Sec. 33 of T.26N., R.29W., only. I therefore obliterate the bearing tree to the South."

II. Found: A limestone 10x8x6 ins. firmly set, marked 1/4 on the N. face.

III. Perpetuation: At the corner point, set a Aluminum pipe 2 1/2 ins. diam., with a 3 1/4 ins. diam., Aluminum cap marked as shown below from which:

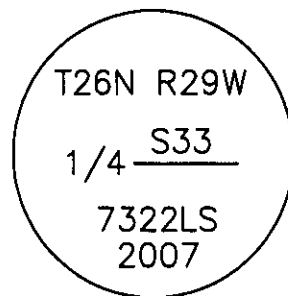
A larch, 11ins. diam., bears N. 39°E., 58.45 ft. dist., mkd. 1/4 S33 BT.
A larch, 12 ins. diam., bears N.43°W., 52.88 ft. dist., mkd. 1/4 S33 BT.

Painted faces and 6 in. wide red bands to all bearing trees and attached bearing tree and Land Survey Monument signs.

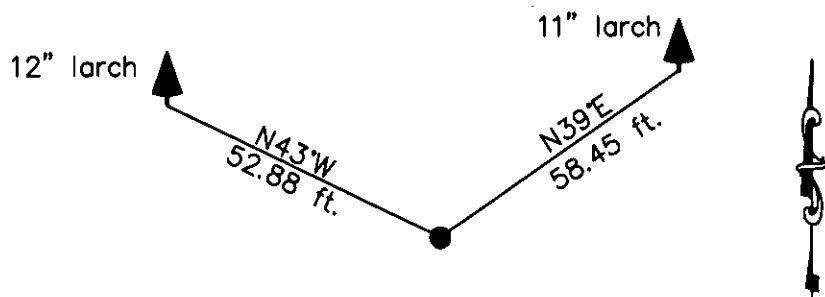
Set a steel post with Survey Monument and Property Line stickers on line 3.00 ft. West of set monument.

Magnetic declination: 18° East

Equipment used: Hand compass and loggers tape



Kootenai Surveyors Inc., 314 California Av., Libby, MT. 59923 (406) 293-4354



OWL CR. - PCTC

SKETCH OF CORNER

CERTIFICATION
I, Levi Powell
certify the information shown herein is true and correct.
Levi Powell
Signature Ground Party Chief
I, Alvah F. Hughes
certify that this Corner Record correctly represents work performed by me or under my direction in compliance with the "Corner Recordation Act" (70-22-101, et seq., M.C.A.)
Alvah F. Hughes
Signature of Surveyor & Seal
Date: 9/6/2007 Reg. No. 7322-LS
Employer: Kootenai Surveyors Inc.

Office of Clerk and Recorder, County of Lincoln This "corner

record" was filed for record --

was noted on the cross-in-

book No. _____

206395 BOOK: CCR CC&R'S PAGE: 11117 Pages: 1

STATE OF MONTANA LINCOLN COUNTY

RECORDED: 10/02/2007 9:55 KOI: CC&R'S

TAMMY D. LAUER CLERK AND RECORDER

FEE: \$0.00

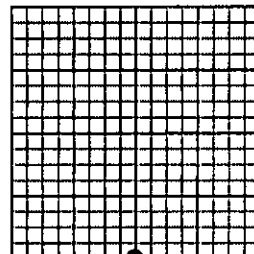
BY: Tammy D. Lauer

TO: KOOTENAI SURVEYORS INC. P.O. BOX 393, LIBBY, MT 59923

Cross Index No. Z 11 T. 26N R. 29W P.M., MT

Adopted July 1, 1981, Montana Board of Professional Engineers & Land Surveyors

Sec. 33



• corner this sheet