

INSTRUCTIONS

1. Original and/or subsequent record used to evaluate the corner position.
2. Description of evidence found, note discrepancies in the record, state method of establishing lost or obliterated corners.
3. Description of monument and accessories set to perpetuate the corner position.
4. Sketch of corner, show all pertinent data which can best be shown in a sketch example, corner marking, topography ties, position of accessories, etc.
5. Certification must be signed and sealed by Land Surveyor registered in the State of Montana.
6. Fill in Cross Index & Section Diagram at bottom of sheet.

CERTIFIED CORNER RECORDATION

Corner SE Cor. Sec. 34 T. 26 North R. 29 West P.M.M. Lincoln County**Original G.L.O. Record:** Charles H. Albee and William K. Trippet 1903

Set a limestone, 14x10x6 ins., 10 ins. in the ground, for cor. of secs. 2, 3, 34, and 35, marked with 2 notches on E. and 4 notches on W. edge; from which

An 18" pine, bears N65°E, 107 links (70.62 feet) distant, marked "T26N R29W S35 BT".

A 16" pine, bears S80°30'E, 91 links (60.06 feet) distant, marked "T25N R29W S2 BT".

A 14" pine, bears S30°45'W, 140 links (92.4 feet) distant, marked "T25N R29W S3 BT".

A 10" pine, bears N22°15'W, 125 links (82.5 feet) distant, marked "T26N R29W S34 BT".

Remonument: 1978

The corner of Sections 2, 3, 34 and 35, on North boundary of the Township, monumented with a limestone, 14 x 10 x 6 inches, firmly set 10 inches in the ground, marked with 2 notches on the East, 4 notches on the West edges, and witnessed by the original bearing trees:

An 18" pine, bears N65°E, 107 links (70.62 feet) distant, with an overgrown blaze.

A 16" pine, bears S81½°E, 91 links (60.06 feet) distant, marked "T25N R29W S2 BT".

A 20" pine, bears S30¾°W, 140 links (92.4 feet) distant, with an overgrown blaze.

A 12" pine, bears N22¼°W, 134 links (88.44 feet) distant, marked "T26N R29W S34 BT". (Record: 125 links (82.5 feet)

At the corner point set an iron post, 30" long, 2 ½" diameter, 16" in the ground to bedrock and in a supporting collar of stone, 3 feet diameter, to top, with brass cap marked as shown below. Bury the original stone alongside the iron post.

Found:

Found standard 3 ¼" brass cap on 2 ½" pipe, 1 ½ foot above ground in a mound of stone, from which:

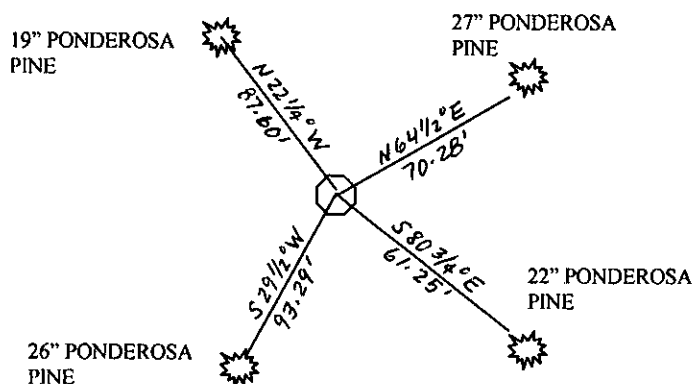
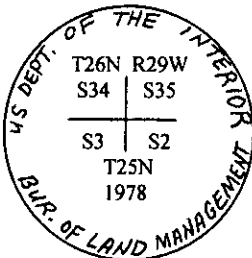
A 26" Ponderosa Pine, bears S29½°W, 93.29 feet distant, marked with an overgrown scribe along with a BT tag: "N30 ¾° E, 140 links (92.4 feet)".

A 22" Ponderosa Pine, bears S80¾°E, 61.25 feet distant, marked with a partially overgrown scribe "T25N R29W S2" along with a BT tag "N 80 ½° W, 91 links (60.06 feet)".

A 27" Ponderosa Pine, bears N64½°E, 70.28 feet distant, marked with an overgrown scribe along with a BT tag "S65°W, 107 links (70.62 feet)".

A 19" Ponderosa Pine, bears N22¼°W, 87.60 feet distant, marked with a partially overgrown scribe "...26N R29W S3..." along with a BT tag "S22¼°E, 134 links (88.44 feet)".

Distances to trees were measured to side-center.



SKETCH OF CORNER

CERTIFICATION

I, James R. Staples
Certify the information shown herein is true and correct.

James R. Staples
Signature Ground Party Chief

I, James R. Staples
certify that this Corner Record correctly represents work performed by me or under my direction in compliance with the "Corner Recordation Act" (70-22-101, et seq., M.C.A.)

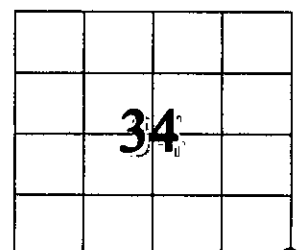
James R. Staples
Signature of Surveyor & Seal

Date: 12/1/06 Reg. No. 9958 LS

Employer: J.R.S. Surveying, Inc.

Office of Clerk and Recorder, County of _____ This "corner
199347 BOOK: CCR CC&R'S PAGE: 10955 Pages: 1
record" was filed for record on STATE OF MONTANA LINCOLN COUNTY
was noted on the cross-index I RECORDED: 12/05/2006 10:00 KOI: CC&R'S
book no. _____ CORAL M. CUMMINGS CLERK AND RECORDER
FEE: \$0.00 BY: Jaannie Stearns
TO: FILED _____ County Official

Cross Index No. Z17 T. 26N R. 29W PMM



• - Corner this sheet