

INSTRUCTIONS

1. Original and/or subsequent record used to evaluate the corner position.
2. Description of evidence found, note discrepancies in the record, state method of establishing lost or obliterated corners.
3. Description of monument and accessories set to perpetuate the corner position.
4. Sketch of corner, show all pertinent data which can best be shown in a sketch example, corner marking, topography ties, position of accessories, etc.
5. Certification must be signed and sealed by Land Surveyor registered in the State of Montana.
6. Fill in Cross Index & Section Diagram at bottom of sheet.

CERTIFIED CORNER RECORDATION

Corner N1/4 Sec. 33 T. 26 North R. 29 West P.M.M. Lincoln County

Original G.L.O. Record:

Set limestone, 16x8x4 inches, 11 inches in the ground, for 1/4 section corner, marked 1/4 on North face; from which:
 An 8" pine, bears N19°30'E, 147 links (97.02 feet) distant, marked "1/4 S28 BT".
 An 8" pine, bears S21°W, 70 links (46.20 feet) distant, marked "1/4 S33 BT".

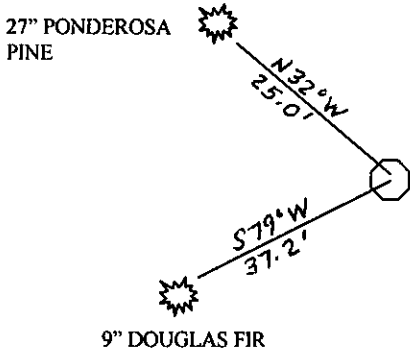
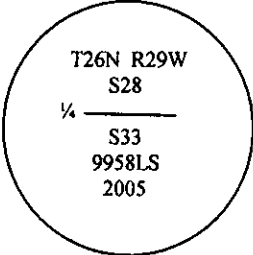
Found:

Found 5/8" rebar N27°14'56"W, 8.84 feet from proportional position. No original evidence available to confirm position.
 Found remains of an old logging skid trail through the computed position of 1/4 corner for Sections 28 & 33.

A 27" Ponderosa pine scribed "T26N R29W S28 1/4 BT" and has BT tag "S47°E, 16.47 feet T26 R29 S28 S1/4 BY: 4975 12/02/02"
 A 9" Douglas Fir scribed: BT has a BT tag "N56E, 37.12ft BY: 4975 T26 R29 S33 N1/4 12/02/02"

Established:

Set a 3/4" standard aluminum monument at proportional position, marked as shown below.
 Found 27" Ponderosa pine with visible scribe, bears N42°W, 24.56 feet distant, attach new BT tag and paint trees with red paint.
 Found 9" Douglas fir with visible scribe, bears S70 1/2°W, 37.06 feet distant, attach new BT tag and paint trees with red paint.
 Bearing tree tags were attached and trees were painted red.



SKETCH OF CORNER

CERTIFICATION

I, James R. Staples
 Certify the information shown herein is true and correct.
James R. Staples
 Signature Ground Party Chief

I, James R. Staples
 certify that this Corner Record correctly represents work performed by me or under my direction in compliance with the "Corner Recordation Act" (70-22-101, et seq., M.C.A.)
James R. Staples
 Signature of Surveyor & Seal

Date: 12/1/06 Reg. No. 9958 LS

Employer: J.R.S. Surveying, Inc.

Office of Clerk and Recorder, County of _____ This "corner
 199346 BOOK: CCR CC&R'S PAGE: 10954 Pages: 1
 record" was filed for record of STATE OF MONTANA LINCOLN COUNTY
 was noted on the cross-index | RECORDED: 12/05/2006 9:55 KOI: CC&R'S
 book no. _____ CORAL M. CUMMINGS CLERK AND RECORDER
 FEE: \$0.00 BY: *Jennie Harris*
 TO: FILED _____ County Official



• - Corner this sheet