

CERTIFIED CORNER RECORDATION

Corner SE cor. of Sec. 11 T 26 N. R. 29 W. P.M.M. LINCOLN County

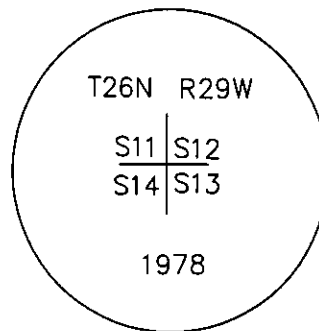
I. Record: 1903 GLO survey by Albee and Trippet: Set a stone and 4 bearing trees.

1978 BLM Remon: Set an iron post, 30 ins. long, 2 1/2 ins. diam., 22 ins. in the ground, with a 3 1/4 in. diam. Brass cap from which:

A larch, 10 ins. diam., bears N. 56°E., 60 lks.(39.60 ft.) dist., mkd. T26N R29W S12 BT.
A larch, 7 ins. diam., bears S. 50°E., 14 lks.(9.24 ft.) dist., mkd. T26N R29W S13 BT.
A fir, 12 ins. diam., bears S. 34°W., 30 lks.(19.80 ft.) dist., mkd. T26N R29W S14 BT.
A larch, 10 ins. diam., bears N. 7°30'W., 13 lks.(8.58 ft.) dist., mkd. T26N R29W S11 BT.

II. Found: A 3 1/4 in. diam. BLM brass cap firmly set 6 ins. above ground with rock collar from which:

A dead larch, 10 ins. diam., bears N.56°E., 39.60 ft. dist., with visible scribes.
A dead larch, 7 ins. diam., bears S.50°E., 9.20 ft. dist., with visible face.
A dead fir, 12 ins. diam., bears S.34°W., 19.80 ft. dist., with visible face.
A dead larch, 10 ins. diam., bears N.7°30'W., 8.60 ft. dist., with visible scribes.



III. Perpetuation:

A fir, 13 ins. diam., bears S57°E., 27.40 ft. dist., mkd. T26N R29W S13 BT.

Painted 6 in. wide red bands around all BT's and attached new Bearing Tree signs as needed and Land Survey Monument signs on back of all bearing trees.

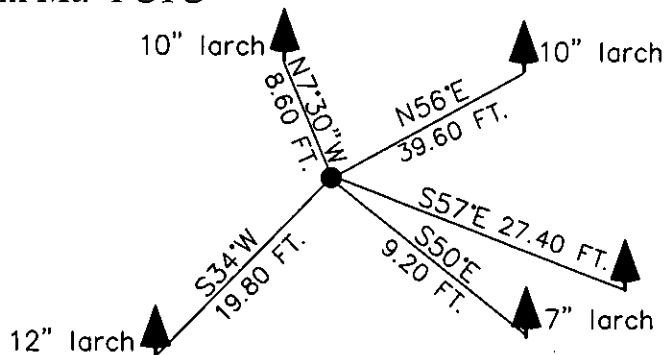
Set a steel post with Land Survey Monument decals 3 ft. West of corner.

Magnetic declination: 20° East assumed

Equipment used: Hand compass and loggers tape

Kootenai Surveyors Inc., 314 California Av., Libby, MT. 59923 (406) 293-4354

Fosseum Mt.- PCTC



SKETCH OF CORNER

CERTIFICATION

I, Ken Kern
certify the information shown herein is true and correct.

Signature Ground Party Chief

Alvah F. Hughes

I certify that this Corner Record correctly represents work performed by me or under my direction in compliance with the "Corner Recordation Act" (70-22-101, et seq., M.C.A.)

Signature of Surveyor & Seal

Date: 3/02/2005 Reg. No. 7322-LS

Employer: Kootenai Surveyors Inc.

Office of Clerk and Recorder, County of Lincoln This "corner

record" was filed for recor 182767 BOOK: CCR CC&R'S PAGE: 10784 Pages: 1

was noted on the cross-i STATE OF MONTANA LINCOLN COUNTY

book No. RECORDED: 03/03/2005 9:25 KOI: CC&R'S

CORAL M. CUMMINGS CLERK AND RECORDER

FEE: \$0.00

TO: FILED

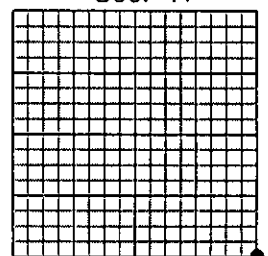
BY: G. Annis

Deputy

Cross Index No. J 21 T. 26N. R. 29W. P.M., MT

Adopted July 1, 1981, Montana Board of Professional Engineers & Land Surveyors

Sec. 11



• corner this sheet