

CERTIFIED CORNER RECORDATION

Corner SW cor. of Sec. 11 T 26 N. R. 29 W. P.M.M. LINCOLN County

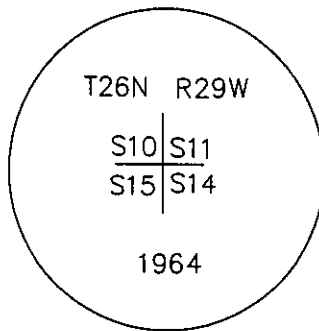
I. Record: 1903 GLO survey by Albee and Trippet: Set a stone and 4 bearing trees.

1964 BLM Remon: Set an iron post, 30 ins. long, 2 1/2 ins. diam., 27 ins. in the ground, with a 3 1/4 in. diam. Brass cap from which:

- A larch, 6 ins. diam., bears N. 75°E., 33 lks.(21.78 ft.) dist., mkd. T26N R29W S10 BT.
- A larch, 7 ins. diam., bears S. 42°E., 41 lks.(27.06 ft.) dist., mkd. T26N R29W S14 BT.
- A larch, 6 ins. diam., bears S. 30°W., 30 lks.(19.80 ft.) dist., mkd. T26N R29W S15 BT.
- A pine, 6 ins. diam., bears N. 24°30'W., 20 lks.(13.20 ft.) dist., mkd. T26N R29W S10 BT.

II. Found: A 3 1/4 in. diam. BLM brass cap firmly set 6 ins. above ground with rock collar from which:

- A larch, 9 ins. diam., bears N.75°E., 17.20 ft. dist., with visible scribes.
- A larch, 13 ins. diam., bears S.42°E., 27.10 ft. dist., with visible face.
- A larch, 9 ins. diam., bears S.30°W., 19.80 ft. dist., with visible face.
- A pine, 9 ins. diam., bears N.24°W., 13.20 ft. dist., with visible scribes.



III. Perpetuation:

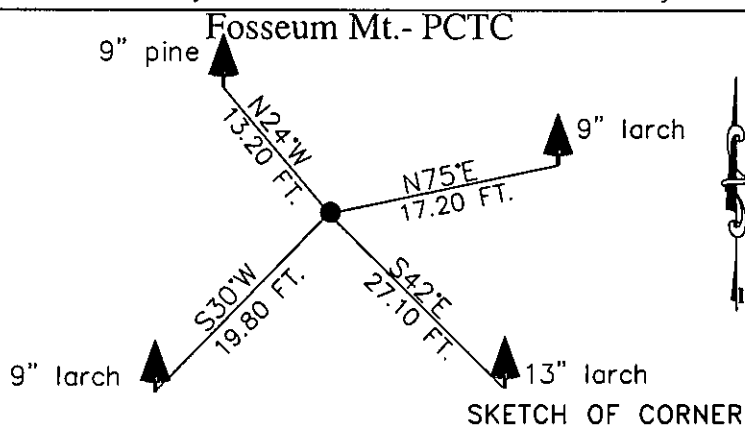
Painted 6 in. wide red bands around all BT's and attached new Bearing Tree signs as needed and Land Survey Monument signs on back of all bearing trees.

Set a steel post with land survey monument decals 3 ft. East of corner.

Magnetic declination: 20° East assumed

Equipment used: Hand compass and loggers tape

Kootenai Surveyors Inc., 314 California Av., Libby, MT. 59923 (406) 293-4354



CERTIFICATION
 I, Ken Kern
 certify the information shown herein is true and correct.
Ken Kern
 Signature Ground Party Chief
Alvah F. Hughes
 I certify that this Corner Record correctly represents work performed by me or under my direction in compliance with the "Corner Recordation Act" (70-22-101, et seq., M.C.A.)
Alvah F. Hughes
 Signature of Surveyor & Seal
 Date: 3/02/2005 Reg. No. 7322-LS
 Employer: Kootenai Surveyors Inc.

Office of Clerk and Recorder, County of Lincoln This "corner

record" was filed for rec: 182765 BOOK: CCR CC&R'S PAGE: 10782 Pages: 1

was noted on the cross- STATE OF MONTANA LINCOLN COUNTY
 book No. RECORDED: 03/03/2005 9:15 KOI: CC&R'S

CORAL M. CUMMINGS CLERK AND RECORDER

FEE: \$0.00

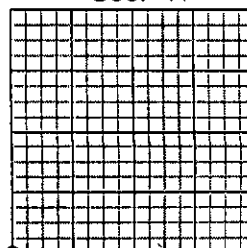
BY: *Geannie Dennis*

TO: FILED

Cross Index No. J 17 T. 26N. R. 29W. P.M., MT

Adopted July 1, 1981, Montana Board of Professional Engineers & Land Surveyors

Sec. 11



• corner this sheet