

# CERTIFIED CORNER RECORDATION

Corner 1/4 COR. SEC. 3 & 10

T. 26N. R. 29W. , PMM

LINCOLN County

## RECORD:

G.L.O. unknown

(1971) Corner Recordation, found brass cap 37.21' north of Hwy centerline.

## FOUND:

A brass cap was found, tied and referenced prior to Hwy. 2 reconstruction.

## SET:

At the location of the brass cap, as determined by the references, we set a 3 1/4" MDT alum. cap marked as shown below and set in concrete, 0.05' below the pavement of Hwy.2, from which were set the following references:

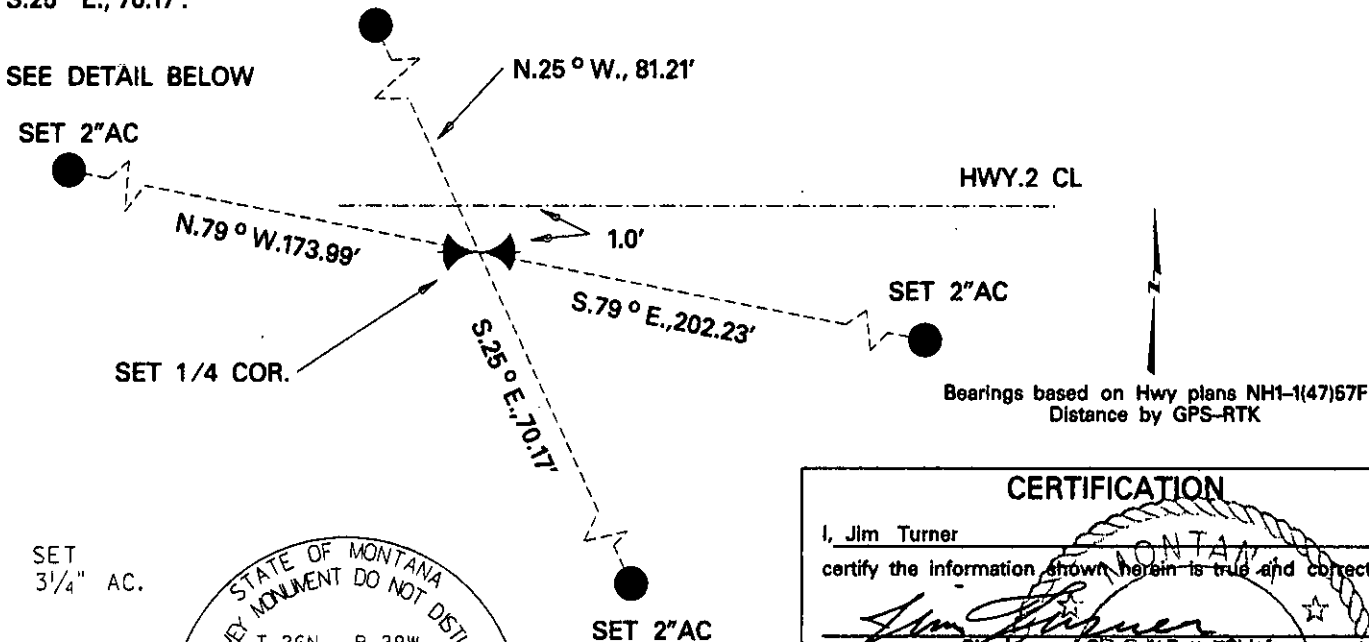
A 2" MDT alum. cap on 5/8" x 24" rebar marked NW2 and with MDT witness post alongside bears N.79° W., 173.99'.

A 2" MDT alum. cap on 5/8" x 24" rebar marked NE4 and with MDT witness post alongside bears N.25° W., 81.21'.

A 2" MDT alum. cap on 5/8" x 24" rebar marked SE1 bears S.79° E., 202.23'.

A 2" MDT alum. cap on 5/8" x 24" rebar marked SW3 and with MDT witness post alongside bears S.25° E., 70.17'.

SEE DETAIL BELOW



## CERTIFICATION

I, Jim Turner

certify the information shown herein is true and correct.

*Donald M. Roedel*  
Signature of Ground Party Chief

I, Donald M. Roedel

certify that this Corner Record correctly represents work performed by me or under my direction in compliance with the "Corner Recordation Act" (70-22-301, et seq., MCA)

*Donald M. Roedel*  
Signature of Surveyor & Seal

Date: 10-31-02

Reg. No. 10999LS

Employer: MDT

## SKETCH OF CORNER

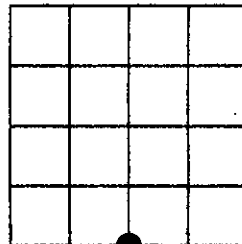
Office of Clerk and Recorder, County of LINCOLN . This "corner

record" was filed for record on Jan 6, 2003 10577

was noted on the cross-index plat, and is assigned Page No. 10577, in Book No. 10577

*Carol M. Cummings by PLS*  
County Official

Sec. 3



• — Corner this sheet