

CERTIFIED CORNER RECORDATION

Corner S W 1/16 S 5 T. 26 N., R. 29 W., P.M.M. Lincoln County

Record :

None

Found Evidence :

A broken down existing rail fence approximately 12 ft. South of established corner.

Perpetuation :

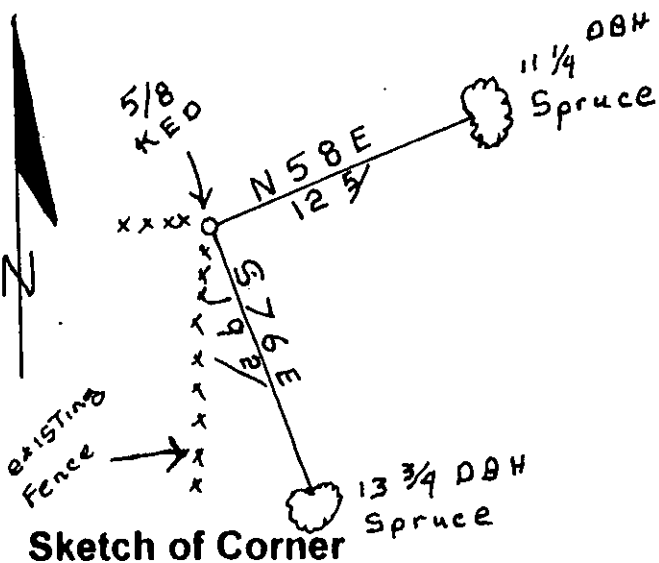
Established two new Bearing Trees and set a 5/8 inch diam. rebar 26 inches long with a 1 1/4 inch YPC stamped: Ked 4975 S , from which:

A 11 1/4 inch DBH Spruce, scribed SW 1/16 S 5 BT Bears N 58° E 12.5 ft. distance,

A 13 3/4 inch DBH Spruce scribed SW 1/16 S 5 BT Bears S 76° E 19.2 ft. distance.

Painted 6 inch wide red band and attached Bearing Tree signs to both trees.

Magnetic Declination: 18° E



SW 1/16 S 5 BT

SW 1/16 S 5 BT

CERTIFICATION

I, George Clark
certify the information shown herein is true and correct

[Signature]
Signature of Ground Party Chief

I, Kenneth E. Davis
certify that this corner record correctly represents work performed by
under my direction in compliance with the "Corner Recordation

[Signature]
Kenneth E. Davis
Surveyor
Davis & Sons Surveying, Inc.

Section

Office of Clerk and Recorder, County of Lincoln

This "corner record" was filed for record on 11/27/00 10459

was noted on the cross-index plat and is assigned page No. _____

in book No. _____
Carol M. Gunning
County Official

