

Corner E 1/16 S 5 T. 26 N., R. 29 W., P.M.M. Lincoln County

Record :  
None

Found Evidence :

None

Perpetuation :

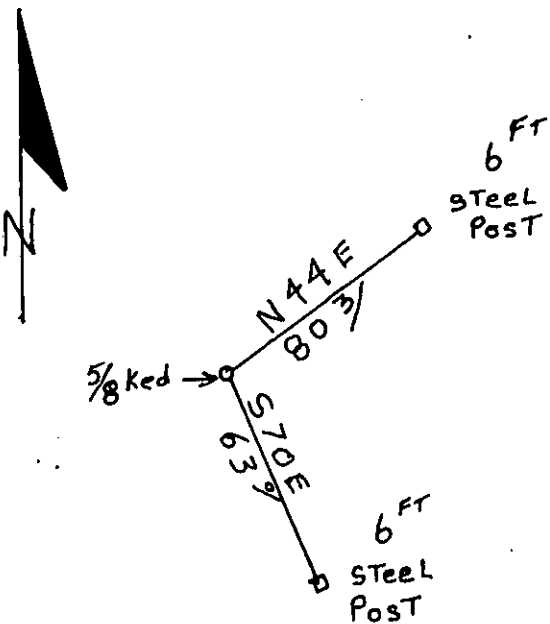
Set a 5/8 inch dia. rebar 26 inches long with a 1 1/4 inch YPC stamped: Ked 4975 S, from which:

A 6 foot steel fence post bears N 44° E 80.3 ft. distance,

A 6 foot steel fence post bears S 70° E 63 ft. distance.

Attached Bearing Tree signs to both posts.

Magnetic Declination: 18° E



Sketch of Corner

CERTIFICATION

I, George Clark  
certify the information shown herein is true and correct

Signature of Ground Party Chief

I, Kenneth E. Davis

certify that this corner record correctly represents work performed by me and/or my assistants in compliance with the "Corner Recordation Act"

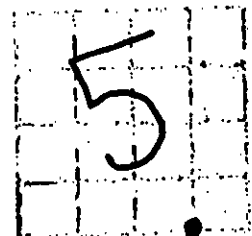
(17022-1) Kenneth E. Davis  
Davis  
Signature of Surveyor  
Date 11-27-00  
Employee of Lincoln Surveying, Inc.

Section

Office of Clerk and Recorder, County of Lincoln

This "corner record" was filed for record on 11-27-00  
was noted on the cross-index plat and is assigned page No. 10455

In book No. Coral M. Cummings By deb  
County Official



Cross Index No. E 1/16 S 5 T. 26 N., R. 29 W., PMM

• THIS CORNER