

CERTIFIED CORNER RECORDATION

Corner GSS E 1/64 S 5 T. 26 N., R. 29 W., P.M.M. Lincoln County

Record :

None

Found Evidence :

A fence corner approximately 35 ft. North-East of established corner.

Perpetuation :

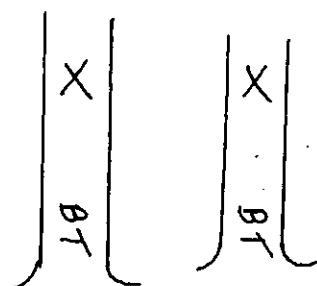
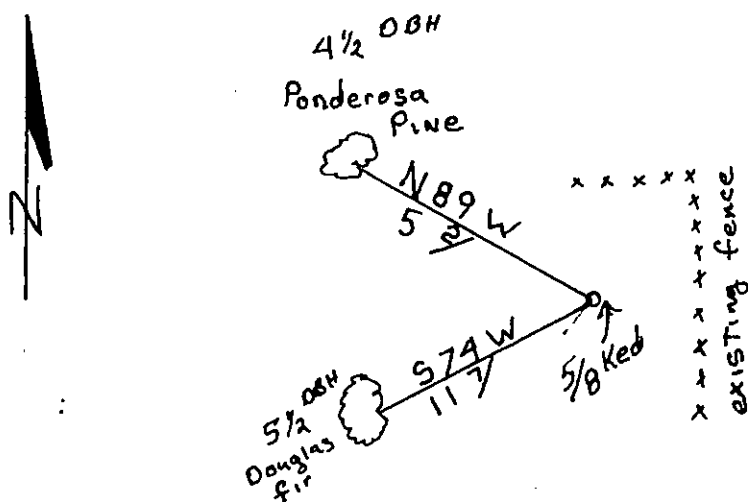
Set a 5/8 inch diam. rebar 26 inches long with a 1 1/4 inch YPC stamped: Ked 4975 S, from which:

A 4 1/2 inch DBH Ponderosa Pine bears N 89° W 5.2 ft. distance scribed: X, BT,

A 5 1/2 inch dia. DBH Douglas Fir bears S 74° W 11.7 ft. distance scribed: X, BT.

Painted 6 inch wide red band and attached Bearing tree signs to both trees.

Magnetic Declination: 18° E



CERTIFICATION

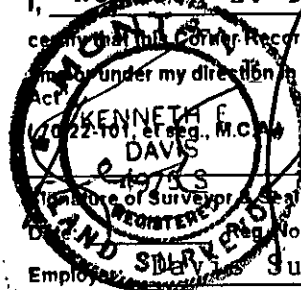
I, George Clark

certify the information shown herein is true and correct

George Clark
Signature of Ground Party Chief

I, Kenneth E. Davis

certify that this Corner Record correctly represents work performed by me or under my direction in compliance with the "Corner Recordation Act"



Sketch of Corner

Section

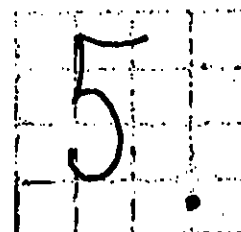
Office of Clerk and Recorder, County of Lincoln

This "corner record" was filed for record on 11-27-00

was noted on the cross-index plat and is assigned page No. 10451

In book No. Coral M. Cummins By DB

County Official



Cross Index No. C-S-SE 1/64 S 5 T. 26 N., R. 29 W., PMM

• THIS CORNER