

CERTIFIED CORNER RECORDATION

Corner 1/4 Cor. S7/S8 T. 26 N., R. 29 W., P.M.M. Lincoln County

Record :

1903 GLO Township Subdivision by Gov't Surveyors C.H. Albee and W.K. Trippet.

"40.00 chs. Set a sandstone, 14x12x5 ins., 10 ins. in the ground, for 1/4 sec. cor., marked 1/4 on W. face; from which:

A Tamarack, 18 ins. diam., bears N. 82°30' E., 68 lks. dist., marked 1/4 S8 BT.
A Pine, 6 ins. diam., bears S. 67° W., 42 lks. dist., marked 1/4 S7 BT."

1998 C. of S. No. 2632 by Davis Surveying, Inc. 1998 Corner Recordation on Page 10058 Corner Recordation Books, Lincoln County Records, Libby, MT.

Found Evidence :

Found a firmly set sandstone, 11x4 ins., 8 ins. exposed above the ground, with 1/4 scribed on the westerly face, from which:

A Western Tamarack snag, 17 ins. diam., bears N 82°30' E, 44.80 ft. dist. with visible scribing.
A Lodgepole Pine snag (blown down), bears S 67° W, 27.00 ft. dist. (approx.), with visible scribing.

Perpetuation :

At the found stone monument position, we replaced it with a 2 1/4 in. diam. alum. pipe 30 ins. long, 26 ins. in the ground, with a 3 1/4 in. diam. alum. cap marked as shown below, from which:

A Ponderosa Pine, 7 1/4 ins. diam., bears N 28° W, 10.50 ft. dist., scribed (1/4 S7 BT).
A Western Tamarack, 12 ins. diam., bears N 77°30' E, 21.40 ft., dist., scribed (1/4 S8 BT).

Paint 6 in. wide bands and scribed faces red on both Bearing Trees.

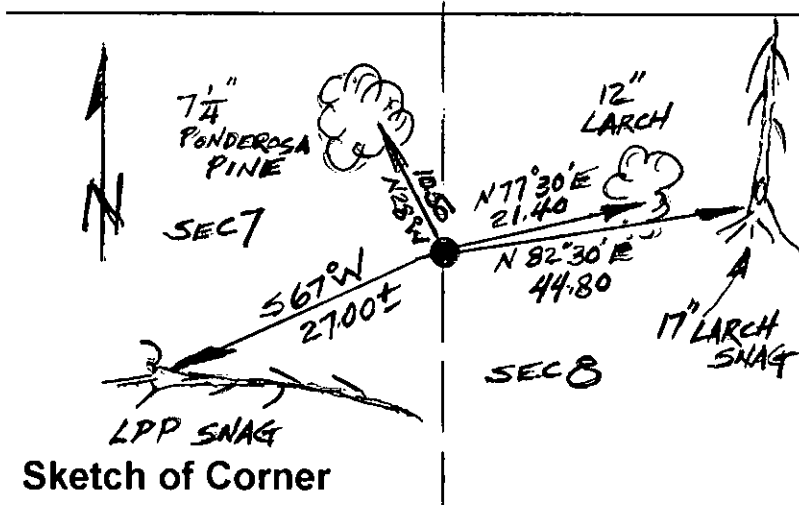
Attached Bearing Tree and Land Survey Monument signs to both trees.

Set a 6 ft. long steel post 2 ft. in the ground with Land Survey Monument and Property Line decals S. 3.00 ft. dist. on line.

Bury original stone monument in a collar of stone around the set monument.



Magnetic Declination: 18° East



CERTIFICATION

I, John Damon

certify the information shown herein is true and correct

Signature of Ground Party Chief

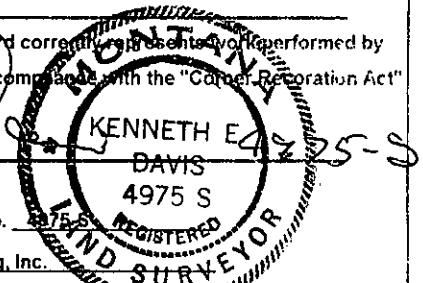
I, Ken E. Davis

certify that this Corner Record correctly represents work performed by me or under my direction in compliance with the "Corner Recordation Act" (70-22-101, et seq., M.C.A.)

Signature of Surveyor & Seal

Date: _____ Reg. No. 4975-S

Employer: Davis Surveying, Inc.



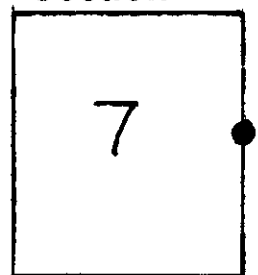
Office of Clerk and Recorder, County of Lincoln

This "corner record" was filed for record on 9-9-98

was noted on the cross-index plat and is assigned page No. 10211

in book No. _____
County Official [Signature]

Section



Cross Index No. 1/4 Cor. S7/S8 T. 26 N., R. 29 W., PMM

● THIS CORNER