

CERTIFIED CORNER RECORDATION

Corner 1/4 Cor. S 6  
S 7 T. 26 N., R. 29 W., P.M.M. Lincoln County

Record :

1903 GLO Township Subdivision by Gov't Surveyors C.H. Albee and W.K. Trippet.

"40.00 chs. Set a limestone, 14x10x5 ins., 10 ins. in the ground, for 1/4 sec. cor., marked 1/4 on N. face; from which:

A Pine, 20 ins. diam., bears S. 74°15' W., 43 lks. dist., marked 1/4 S7 BT.

A Pine, 14 ins. diam., bears N. 52°30' W., 79 lks. dist., marked 1/4 S6 BT."

Found Evidence :

During a field search of the area, a limestone 14½x12x3 ins., 9 ins. in the ground firmly set, with 1/4 scribed on the N. face, from which:

A Ponderosa Pine snag, 19 ins. diam., bears S 72° W, 40.80 ft. dist. (Record S 74°15' W 43 lks.) with visible scribing.

A Ponderosa Pine snag, 14 ins. diam., bears N 50° W, 45.30 ft. dist. (Record N 52°30' W 79 lks.) with visible scribing.

Perpetuation :

At the found stone monument position, set a 2 ½ in. diam. alum. pipe 30 ins. long, 26 ins. in the ground, with a 3 1/4 in. diam. alum. cap marked as shown below, from which:

A Douglas Fir, 7 ½ ins. diam., bears S 44°30' W, 15.00 ft. dist., scribed (1/4 S7 BT).

A Douglas Fir, 10 ins. diam., bears N 9° W, 7.30 ft., dist., scribed (1/4 S6 BT).

Bury original stone alongside set monument in a collar of stone.

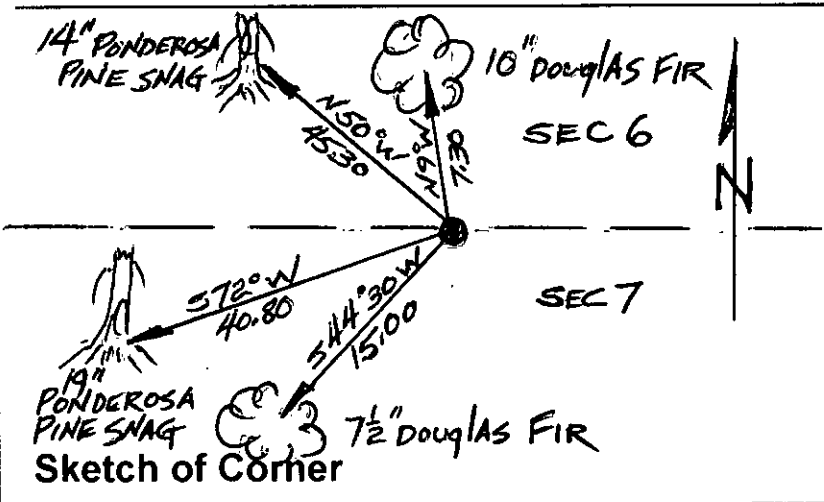
Paint 6 in. wide bands and scribed faces red.

Attached Bearing Tree and Land Survey Monument signs to both Bearing Trees.

Set a 6 ft. long steel post 2 ft. in the ground, 3 ft. east of set monument with Property Line and Land Survey Monument decals attached.



Magnetic Declination: 18° East



CERTIFICATION

I, John Damon

certify the information shown herein is true and correct

John Damon

Signature of Ground Party Chief

I, Ken E. Davis

certify that this Corner Record correctly represents work performed by me or under my direction in compliance with the "Corner Recordation Act" (70-22-101, et seq., M.C.A.)

Ken E. Davis

Signature of Surveyor & Seal

Date: \_\_\_\_\_ Reg. No. 4975 S

Employer: Davis Surveying, Inc.

**KENNETH E. DAVIS**  
4975 S  
REGISTERED  
LAND SURVEYOR

Office of Clerk and Recorder, County of Lincoln

This "corner record" was filed for record on 9-9-98

was noted on the cross-index plat and is assigned page No. 10210

in book No. \_\_\_\_\_

Carol M. Cunningham Byrd

County Official

Section

7

• THIS CORNER

Cross Index No. 1/4 Cor. S 6  
S 7 T. 26 N., R. 29 W., PMM