

CERTIFIED CORNER RECORDATION

Corner S-N 1/64 T. 26 N., R. 29 W., P.M.M. Lincoln County

Record :

1903 GLO Township Subdivision by Gov't Surveyors C.H. Albee and W.K. Trippet. No monument set.

1998 C. of S. NO. 2633 by Davis Surveying, Inc. No monument set.

Found Evidence :

During a field search of the area, found a 3/4 in. diam. pipe set with two witness trees by Champion Timber Company surveyors.

Perpetuation :

At the computed position, set a 5/8 in. diam. alum. rod, 30 ins. long, 28 ins. in the ground, with a 3 1/4 in. diam. alum. cap marked as shown below, from which:

A Western Tamarack, 11 1/2 ins. diam., bears N 69° W, 16.40 ft. dist., scribed (S-N 1/64 S7 BT).

A Western Tamarack, 15 1/2 ins. diam., bears N 47° E, 13.20 ft. dist., scribed (S-N 1/64 S8 BT).

The above mentioned 3/4 in. diam. pipe bears north 1.50 ft. dist.

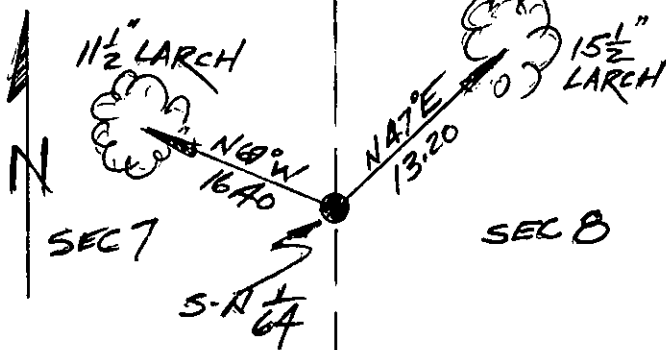
Paint 6 in. wide bands and scribed faces red.

Attached Bearing Tree and Land Survey Monument signs to both trees.

Set a 6 ft. long steel post with Land Survey Monument and Property Line decals 2 ft. in the ground, 3 ft. south on line.



Magnetic Declination: 18° East



Sketch of Corner

CERTIFICATION

I, John Damon
certify the information shown herein is true and correct
John Damon

Signature of Ground Party Chief

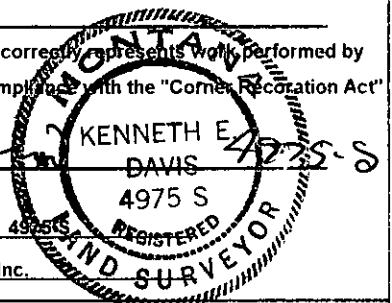
I, Ken E. Davis

certify that this Corner Record correctly represents work performed by me or under my direction in compliance with the "Corner Recordation Act" (70-22-101, et seq., M.C.A.)

Ken E. Davis
Signature of Surveyor & Seal

Date: _____ Reg. No. 49255

Employer: Davis Surveying, Inc.



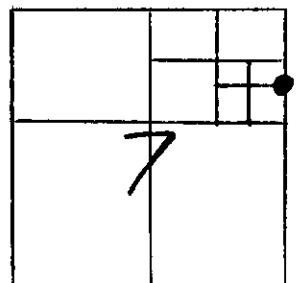
Office of Clerk and Recorder, County of Lincoln

This "corner record" was filed for record on 9-9-98

was noted on the cross-index plat and is assigned page No. 10209

in book No. _____
Coral M. Cummings By PLS
County Official

Section



Cross Index No. S-N 1/64 T. 26 N., R. 29 W., PMM