

# CERTIFIED CORNER RECORDATION

Corner Sec. CC 12 S6 S7 T. 26 N., R. 29 W., P.M.M. Lincoln County

## Record :

1903 GLO Township Subdivision by Gov't Surveyors C.H. Albee and W.K. Trippet.

"75.75 chs. Set a quartzite, 14x10x6 ins., 10 ins. in the ground, for closing corner of Secs. 6 and 7, marked CC on E. and 5 grooves on S. and 1 groove on N. face; from which:

A fir, 9 ins. diam., bears N. 72° E., 27 lks. dist., marked T26N R29W S6 BT.

A fir, 8 ins. diam., bears S. 50°30' E., 39 lks. dist., marked T26N R29W S7 BT.

## Found Evidence :

During a field search of the area, a quartzite stone 18x10x6 ins., 14 ins. in the ground firmly set, but the faces have been shattered from the weather and no original markings are visible, from which:

A Douglas Fir stump hole bears N 74° E, 16.80 ft. dist. (record N 72° E 27 lks.).

A Douglas Fir stump hole bears S 48° E, 20.60 ft. dist. (record S 50°30' E 39 lks.).

## Perpetuation :

At the found stone monument position, set a 2 1/2 in. diam. alum. pipe 30 ins. long, 26 ins. in the ground with a 3 1/4 in. diam. alum. cap marked as shown below, from which:

A Douglas Fir, 4 1/2 ins. diam., bears N 73° E, 27.20 ft. dist., scribed ("X" BT).

A Douglas Fir, 9 3/4 ins. diam., bears S 70° E, 16.10 ft., dist., scribed (T26N R29W S7 BT).

Bury found stone alongside set monument in a collar of stone.

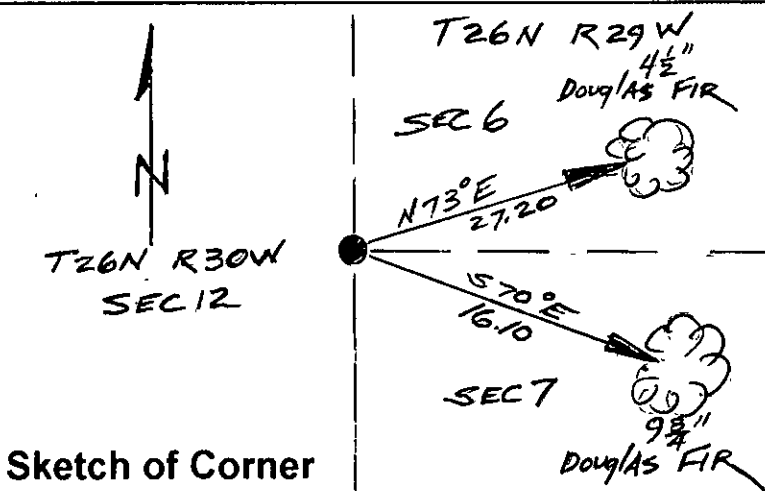
Paint 6 in. wide bands and scribed faces red.

Attached Bearing Tree and Land Survey Monument signs to Bearing Trees.

Set a 6 ft. long steel post, 2 ft. in the ground, with Land Survey Monument and Property Line decals attached 3 ft. E. of cor. on line.



Magnetic Declination: 18° East



Sketch of Corner

## CERTIFICATION

I, John Damon

certify the information shown herein is true and correct

Signature of Ground Party Chief

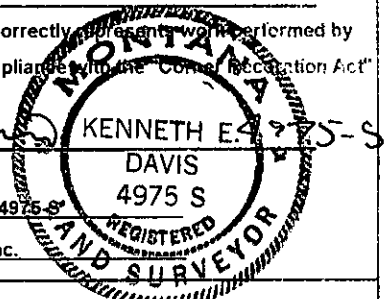
I, Ken E. Davis

certify that this Corner Record correctly represents work performed by me or under my direction in compliance with the "Corner Recordation Act" (70-22-101, et seq., M.C.A.)

Signature of Surveyor & Seal

Date: \_\_\_\_\_ Reg. No. 4975-S

Employer: Davis Surveying, Inc.

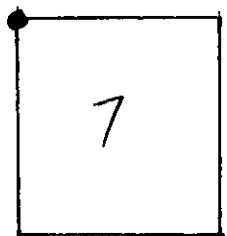


## Section

Office of Clerk and Recorder, County of Lincoln

This "corner record" was filed for record on 9-9-98 was noted on the cross-index plat and is assigned page No. 10208

in book No. \_\_\_\_\_ County Official Carol M. Cunningham by ROB



Cross Index No. CC 12 S6 S7 T. 26 N., R. 29 W., PMM

• THIS CORNER