

CERTIFIED CORNER RECORDATION

Corner Sec. CC 13 S7 S18 T. 26 N., R. 29 W., P.M.M. Lincoln County

Record :

1903 GLO Township Subdivision by Gov't Surveyors C.H. Albee and W.K. Trippet.

"75.40 chs. Set a shalestone, 18x10x3 ins., 14 ins. in the ground for closing corner of Secs. 7 and 18, marked CC on E. with 4 grooves on S. and 2 grooves on N. face; from which:

A Tamarack, 16 ins. diam., bears N. 50°45' E., 169 lks. dist., marked T26N R29W S7 BT.
A Tamarack, 12 ins. diam., bears S. 45° E., 48 lks. dist., marked T26N R29W S18 BT.

1983 C. of S. No. 1327 by Griffin 7320 LS.

Found Evidence :

During a field search of the area, a shalestone 18x10x3 ins., 13 ins. in the ground firmly set was found with 4 grooves on South face and a small "x" scribed on the top of stone, from which:

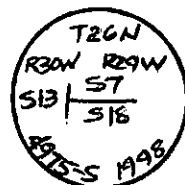
A Western Tamarack snag, 12 ins. diam., bears S 42° E, 31.80 ft. dist., with a visible "8" on the burned out face.
A Western Tamarack snag, 15 ins. diam., bears N 48° E, 65.00 ft. dist. (record 111.54 ft.). This tree has a badly rotted out center with burnt sides, and has been torn apart by bear. Cannot be 100% confirmed as an original accessory per this 1903 survey. A mound of stone 2 ft. wide at base and 1 1/2 ft. high bears north of corner.

Perpetuation :

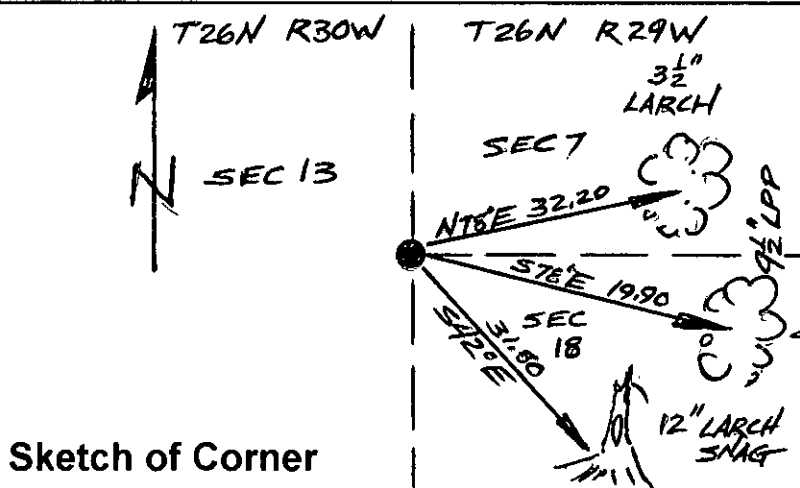
At the found stone monument position we replace it with a 2 1/2 in. diam. alum. pipe 30 ins. long, 26 ins. in the ground with a 3 1/4 in. diam. alum. cap marked as shown below, from which:

A Western Tamarack, 3 1/2 ins. diam. bears N 78° E, 32.20 ft. dist., scribed ("X" BT).
A Lodgepole Pine, 9 1/2 ins. diam. bears S 78° E, 19.90 ft., dist., scribed (T26N R29W S18 BT).

Set a 6 ft. long steel post, 2 ft. in the ground with attached Land Survey Monument and Property Line decals east 3.00 ft. dist. on line.
Bury original stone monument in a collar of stone around the set monument.
Paint 6 in. wide bands and scribed faces red on both Bearing Trees.
Attached Bearing Tree and Land Survey Monument signs to all trees.



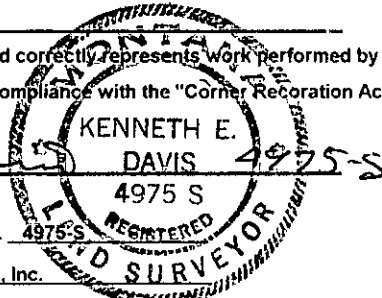
Magnetic Declination: 18° East



Sketch of Corner

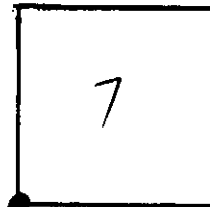
CERTIFICATION

I, John Damon
certify the information shown herein is true and correct
John Damon
Signature of Ground Party Chief
I, Ken E. Davis
certify that this Corner Record correctly represents work performed by me or under my direction in compliance with the "Corner Recordation Act" (70-22-101, et seq., M.C.A.)
Ken E. Davis
Signature of Surveyor & Seal
Date: _____ Reg. No. 4975-S
Employer: Davis Surveying, Inc.



Office of Clerk and Recorder, County of Lincoln
This "corner record" was filed for record on 9-9-98
was noted on the cross-index plat and is assigned page No. 10207
in book No. _____
Carol M. Cunningham
County Official

Section



Cross Index No. S | S7 CC 13 S18 T. 26 N., R. 29 W., PMM

● THIS CORNER