

-CERTIFIED CORNER RECORDATION

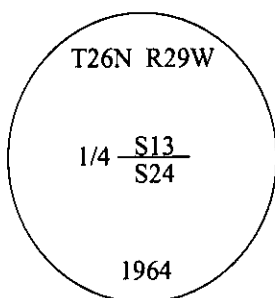
Corner 1/4 **Secs.** 13&24 **T.** 26N **R.** 29W **P.M., MT** **Lincoln** **County**

I. 1903 G.L.O. Record by Charles H. Albee: Set a limestone, 12x10x5 ins., 8 ins. in the ground, for 1/4 sec. cor., mkd. "1/4" on the N. face.

Established two bearing trees:

- A tamarack, 30 ins. diam., bears N53°E, 75 lks. dist., mkd. "1/4 S13 BT".
- A tamarack, 26 ins. diam., bears S57°45'E, 41 lks. dist., mkd. "1/4 S24 BT".

1964 B.L.M. Remonumentation Record by Richard L. Larimer et.al.: The 1/4 sec. cor. of secs 13 and 24, as determined from the remains of the original bearing trees. At the corner point, set an iron post, 30 ins. long, 2 1/2 ins. diam., 27 ins. in the ground, with brass cap mkd. as shown.



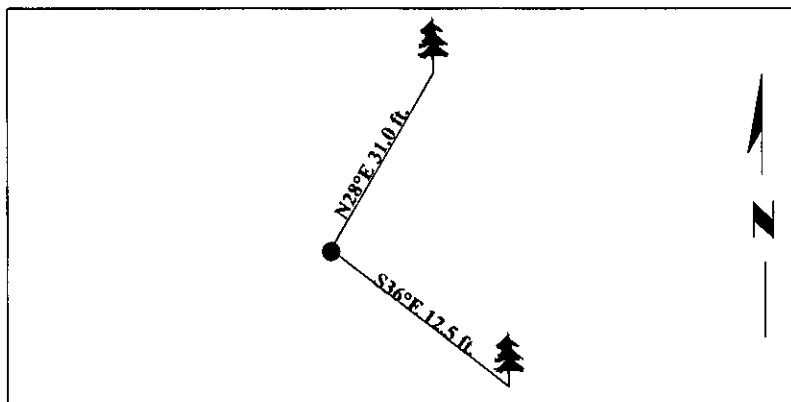
Established two new bearing trees.

II. Found a 2 1/2 in. diam. iron pipe, firmly set, with a 3 1/4 in. diam. B.L.M. brass cap, mkd. as shown. from which:

- A larch, 12 ins. diam., bears N28°E, 31.0 ft. dist., mkd. with "1/4 S13 BT". (BLM-record -N29°E-18 lks.-11.88 ft.)
- A larch, 10 ins. diam., bears S36°E, 12.5 ft. dist., with a healed face. (BLM-record-S39°E)

III. Painted bearing trees and attached Land Survey Monument and Bearing Tree signs.

Magnetic Declination: 20° East



SKETCH OF CORNER

CERTIFICATION

I. Thomas M. Hommel
certify the information shown herein is true and correct.

Thomas M. Hommel

I. Steven A. Boyer
certify that this Corner Record correctly represents work performed by me or under my direction in compliance with the Corner Recordation Act (70-22-101, et seq., M.C.A.)

Steven A. Boyer
Signature of Surveyor & Seal

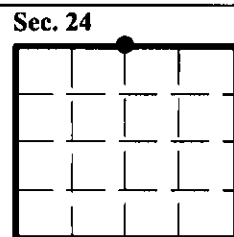
Date: 4/20/98

Reg. No.: 9750LS

Employer: U.S. FOREST SERVICE

Office of Clerk and Recorder, County of Lincoln. This "corner record" was filed for record on 8-19-98 and was noted on the cross-index plat and is assigned page No. 10189 in book No. _____.

Coral M. Cummings
County Official



● - corner this sheet