

-CERTIFIED CORNER RECORDATION

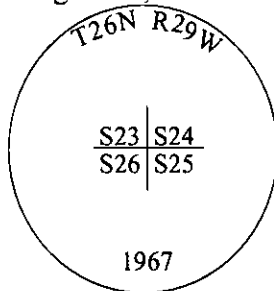
Corner 1/4 Secs. 13&24 T. 26N R. 29W P.M., MT Lincoln County

- I. 1903 G.L.O. Record by Charles H. Albee: Set a limestone, 12x10x5 ins., 8 ins. in the ground, for cor. of secs. 23,24,25 and 26, mkd. with 2 notches on S. and 1 notch on E. edge.

Established four bearing trees:

- A pine, 24 ins. diam., bears N02°E, 143 lks. dist., mkd. "T26N R29W S24 BT".
A pine, 8 ins. diam., bears S72°30'E, 118 lks. dist., mkd. "T26N R29W S25 BT".
A pine, 28 ins. diam., bears S10°45'E, 97 lks. dist., mkd. "T26N R29W S26 BT".
A fir, 12 ins. diam., bears N61°25'E, 114 lks. dist., mkd. "T26N R29W S23 BT".

1967 B.L.M. Remonumentation Record by Woodrow E. Damm et.al.: The cor. of secs 23,24,25 and 26, monumented with a limestone, 12x10x5 ins., firmly set, mkd. with 2 grooves on the S. face, 1 groove on the E. face and witnessed by the original bearing trees. At the corner point, set an iron post, 30 ins. long, 2 1/2 ins. diam., 24 ins. in the ground, with brass cap mkd. as shown.



Bury the original stone alongside the iron post.

- II. Found a 2 1/2 in. diam. iron pipe, firmly set, protruding 4 ins. above the ground, with a 3 1/4 in. diam. B.L.M. brass cap, mkd. as shown.

from which:

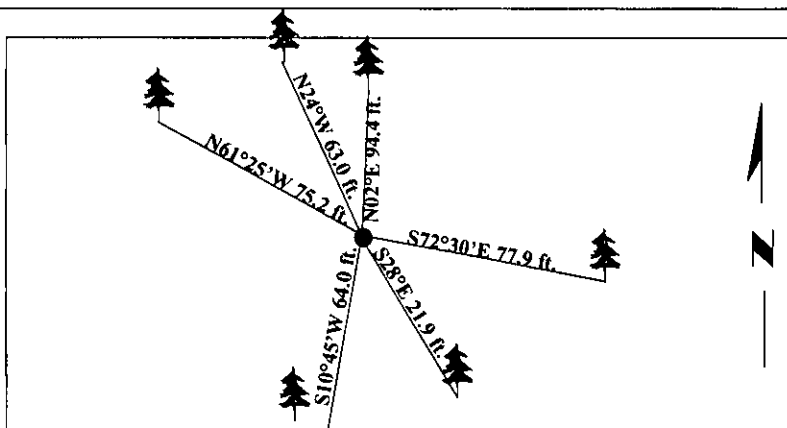
- A pine, 32 ins. diam., bears N02°E, 94.4 ft. dist., mkd. "T26N R29W S24 BT".
A pine, 20 ins. diam., bears S72°30'E, 77.9 ft. dist., mkd. "T26N R29W S25 BT".
A pine, 32 ins. diam., bears S10°45'W, 64.0 ft. dist., mkd. "T26N R29W S26 BT".
A fir, 24 ins. diam., bears N61°25'E, 75.2. dist., mkd. "T26N R29W S23 BT".

- III. Established two new bearing trees:

- A fir, 9 ins. diam., bears S28°E, 21.9 ft. dist., mkd. "T26N R29W S25 BT".
A fir, 8 ins. diam., bears N24°W, 63.0 ft. dist., mkd. "T26N R29W S23 BT".

Painted bearing trees and attached Land Survey Monument and Bearing Tree signs.

Magnetic Declination: 20° East



SKETCH OF CORNER

CERTIFICATION

I. Thomas M. Hommel

certify the information shown herein is true and correct.

I. Steven A. Boyer

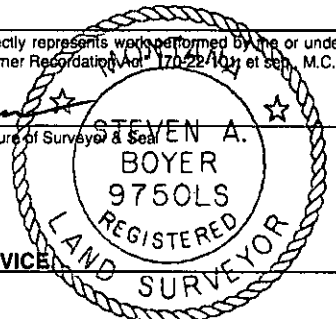
certify that this Corner Record correctly represents work performed by me or under my direction in compliance with the "Corner Recordation Act" (70-22-101, et seq., M.C.A.)

Steven A. Boyer
Signature of Surveyor & Seal

Date: 4/22/98

Reg. No.: 9750LS

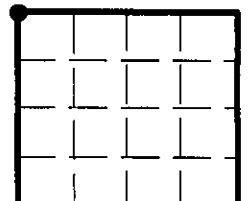
Employer: U.S. FOREST SERVICE



Sec. 25

Office of Clerk and Recorder, County of Lincoln. This "corner record" was filed for record on 8-19-98 and was noted on the cross-index plat and is assigned page No. 10188 in book No. _____

Carol M. Cumming
County Official



• - corner this sheet