

-CERTIFIED CORNER RECORDATION

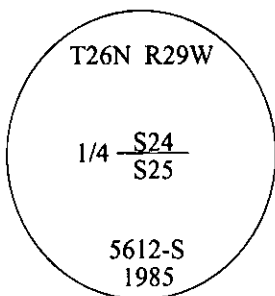
Corner 1/4 Secs. 24&25 T. 26N R. 29W P.M., MT Lincoln County

I. 1903 G.L.O. Record by Charles H. Albee: Set a limestone, 12x10x5 ins., 8 ins. in the ground for 1/4 sec. cor., mkd. "1/4" on the N. face.

Established two bearing trees:

- A pine, 7 ins. diam., bears N14°30'E, 45 lks. dist., mkd. "1/4 S24 BT".
- A pine, 7 ins. diam., bears S73°20'E, 41 lks. dist., mkd. "1/4 S25 BT".

1985 Certified Corner Recordation by Thomas C. Hill, 5612S: Found stone, 13x8x5 ins., 10 ins. in the ground, loosely set, with no visible marks and witnessed by the original bearing trees. At the position of the found stone, set an aluminum post, 30 ins. long, 2 1/2 ins. diam., 26 ins. in the ground, with an aluminum cap mkd. as shown.



Established one new bearing tree and buried the original stone alongside. Set a steel guard post, East, 2.0 ft. dist. of the corner, with a Land Survey Marker decal attached.

II. Found a 2 1/2 in. diam. aluminum pipe, firmly set, protruding 1 in. above the ground, with a 3 1/4 in. diam. aluminum cap, mkd. as shown.

from which:

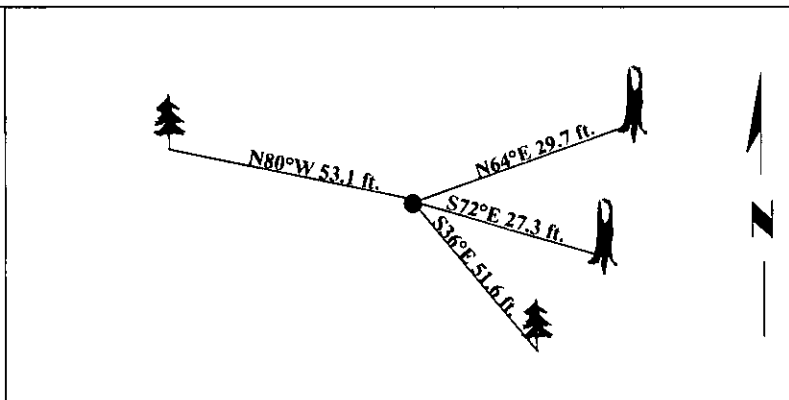
- A dead pine, 10 ins. diam., bears N64°E, 29.7 ft. dist., with visible scribe. (GLO-record-N14°30'E-45 lks.-29.70 ft.)
- A pine snag, 10 ins. diam., bears S72°E, 27.3 ft. dist., with visible scribe. (GLO-record-S73°20'E-41 lks.-27.06 ft.)
- A fir, 8 ins. diam., bears S36°E, 51.6 ft. dist., mkd. with visible scribe. (1985-record)

III. Established one new bearing tree:

- A fir, 10 ins. diam., bears N80°W, 53.1 ft. dist., mkd. "1/4 S24 BT".

Painted bearing trees and attached Land Survey Monument and Bearing Tree signs.

Magnetic Declination: 20° East



SKETCH OF CORNER

CERTIFICATION

I. Thomas M. Hommel
certify the information shown herein is true and correct.

Thomas M. Hommel

I. Steven A. Boyer
certify that this Corner Record correctly represents work performed by me or under my direction in compliance with the "Corner Recordation Act" (70-22-101, et seq., M.C.A.).

Steven A. Boyer
Signature of Surveyor & Seal

Date: 4/20/98

Reg. No.: 9750LS

Employer: U.S. FOREST SERVICE

Office of Clerk and Recorder, County of Lincoln. This "corner record" was filed for record on 8-19-98 and was noted on the cross-index map and is assigned page No. 10186 in book No. _____.

Carol M. Cummins B/EB
County Official

