

CERTIFIED CORNER RECORDATIC

Corner C 1/4 SEC. 24 T. 26 N., R. 29 W., P.M.M. Lincoln County

Record :

1903 GLO Township Subdivison by C. Alvee and W. Trippet.

1998 USFS Section Breakdown by S. Boyer USFS land surveyor on record at the Lincoln County Courthouse.

Found Evidence :

No monuments were found during field search of area.

Perpetuation :

The C 1/4 Corner for Section 24, T. 26 N., R. 29 W., P.M.M., was set from computed location from the 1998 USFS Section Breakdown.

At the computed position, set a 2 1/2 inch diam. alum. pipe 30 ins. long, 25 ins. in the ground, with a 3 1/4 inch diam. alum. cap marked as shown below, from which:

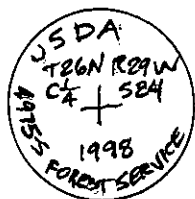
A Douglas Fir, 14 ins. diam., bears N. 23° W., 32.80 feet dist., scribed (C 1/4 S24 BT).

A Douglas Fir, 17 ins. diam., bears S. 8°E., 29.70 feet dist., scribed (C 1/4 S24 BT).

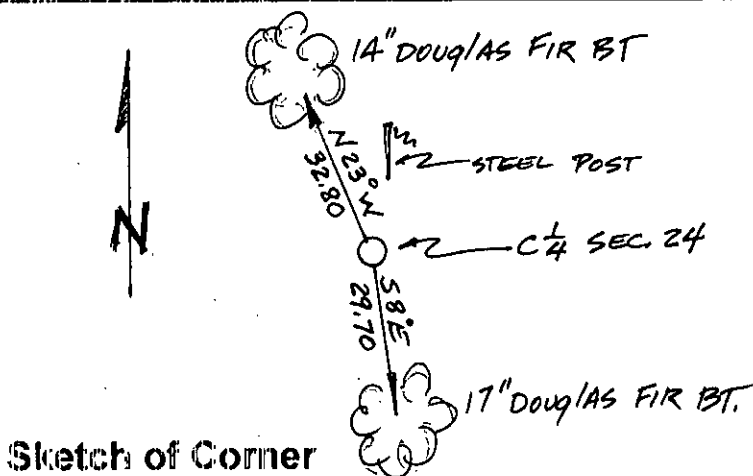
Painted scribed faces red and 6 inch wide red bands around both Bearing Trees.

Attached Bearing Tree and Land Survey Monument signs to both trees.

Set a steel post with attached Property and Land Survey Monument decals 3 ft. north on line.



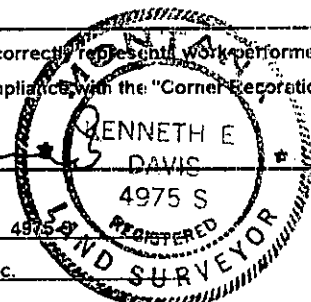
Magnetic Declination: 18° East



CERTIFICATION

I, John Damon certify the information shown herein is true and correct
John Damon
Signature of Ground Party Chief

I, Kenneth E. Davis certify that this Corner Record correctly reflects the work performed by me or under my direction in compliance with the "Corner Restoration Act" (70-22-101, et seq., M.C.A.)
Kenneth E. Davis
Signature of Surveyor & Seal
Date: 5/28/98 Reg. No. 4975 S
Employer: Davis Surveying, Inc.

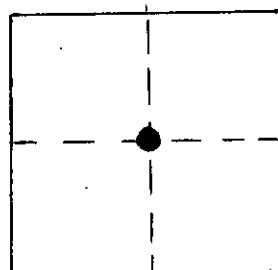


Office of Clerk and Recorder, County of Lincoln.

This "corner record" was filed for record on 6-2-98 was noted on the cross-index plat and is assigned page No. 10113 in book No. Coal M. Lumbering By D&B

County Official

Section 24



• THIS CORNER

Cross Index No. C 1/4 Sec. 24 T. 26 N., R. 29 W., PMM