

CERTIFIED CORNER RECORDATION

Corner NE 1/16 S8 T. 26 N., R. 29 W., P.M.M. Lincoln County

Record :

None

Found Evidence :

None

Perpetuation :

At the computed location from a section breakdown by Davis Surveying, Inc., on record at the Lincoln County Courthouse, set a 5/8 inch dia., 24 inch long steel rebar, 22 ins. in the ground, with a 1 1/4 inch dia. Yellow P.V.C. cap stamped as shown below, from which:

A Douglas Fir, 12 1/2 ins. dia., bears N. 36° E., 25.00 ft. dist., scribed (NE 1/16 S8 BT).

A Larch, 11 1/2 ins. dia., bears S. 1° W., 7.60 ft. dist., scribed (NE 1/16 S8 BT).

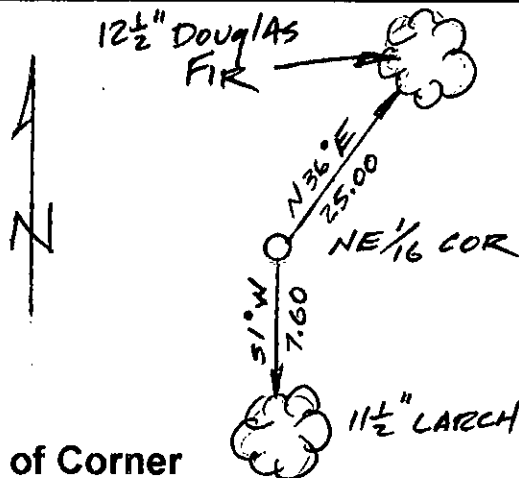
Painted scribed faces red with 6 inch wide red bands around both Bearing Trees.

Attached Bearing Tree signs to both trees.

Set a 4 ft. long angle iron 1 ft. in the ground alongside the monument.



Magnetic Declination: 18° East



Sketch of Corner

CERTIFICATION

I, John Damon

certify the information shown herein is true and correct

John Damon
Signature of Ground Party Chief

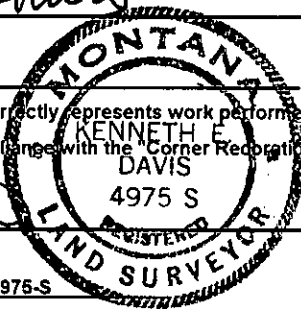
I, Kenneth E. Davis

certify that this Corner Record correctly represents work performed by me or under my direction in compliance with the "Corner Recordation Act" (10-22-101, et seq., M.C.A.)

Kenneth E. Davis
Signature of Surveyor & Seal

Date: 1-19-98 Reg. No. 4975-S

Employer: Davis Surveying, Inc.



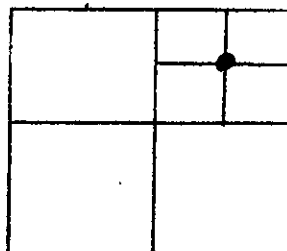
Office of Clerk and Recorder, County of Lincoln

This "corner record" was filed for record on 1-26-98

was noted on the cross-index plat and is assigned page No. 10074

in book No. Coal M. Humphreys
County Official

Section 8



Cross Index No. NE 1/16 S8 T. 26 N., R. 29 W., PMM

• THIS CORNER