

# CERTIFIED CORNER RECORDATION

Corner Sec. Cor. 718 615 T. 26 N., R. 29 W., P.M.M. Lincoln County

## Record :

1903 GLO survey by C.H. Albee.

"Set a limestone 14x12x4 ins., 10 ins. in the ground, for cor. Of Secs. 5, 6, 7 and 8, marked with 5 notches, each, on S. and E. edges, from which:

- A Tamarack, 20 ins. diam., bears N. 71°30" E., 44 lks. dist., marked T26N R29W S5 BT.
- A Fir, 8 ins. diam. bears S. 47°15' E., 34 lks. dist., marked T26N R29W S8 BT.
- A Tamarack, 12 ins. diam. bears S. 5°45' W., 60 lks. dist., marked T26N R29W S7 BT.
- A Pine, 9 ins. diam., bears N. 12°45' W., 25 lks. dist., marked T26N R29W S6 BT.

## Found Evidence :

Found a loosely set limestone, 11x3 ins., 8 ins. exposed above the ground with 5 notches scribed on the S. and E. edges, from which:

A Larch snag, 14 ins. dia. with a visible face, bears S. 5° W., 39.60 feet dist.

No other accessories were recovered for this corner due to heavy logging operations in the last few years.

## Perpetuation :

At the found stone monument position, we replaced it with a 2 1/2 inch dia. alum. pipe, 30 ins. long, 26 ins. in the ground, with a 3 1/4 inch alum. cap marked as shown below, from which:

A Douglas Fir, 3 ins. dia., bears N. 11° E., 15.65 ft., scribed "X" BT.

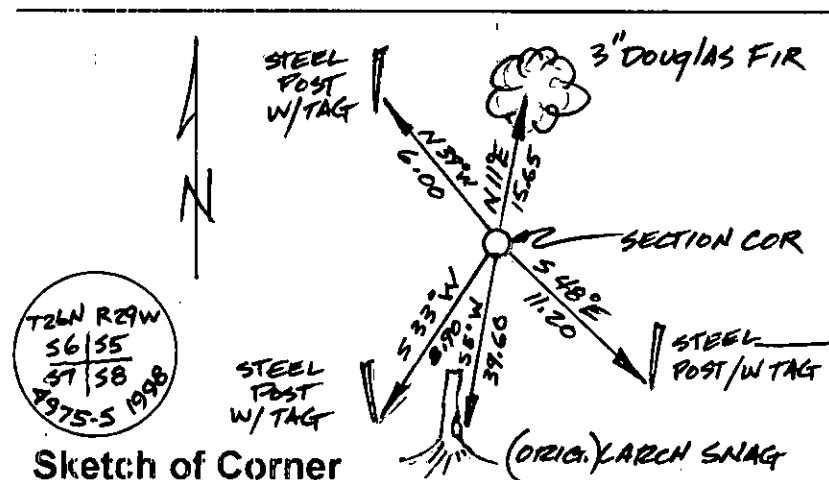
A steel post 6 ft. long, 2 ft. in the ground, bears S. 48° E., 11.20 ft. dist., with attached Bearing Tree sign.

A steel post 6 ft. long, 2 ft. in the ground, bears S. 33° W., 8.90 ft. dist., with attached Bearing Tree sign.

A steel post 6 ft. long, 2 ft. in the ground, bears N. 39° W., 6.00 ft. dist., with attached Bearing Tree sign and Property and Land Survey Monument decal.

Paint scribed face red and 6 inch wide band around the one established Bearing Tree.

Magnetic Declination: 18° East



## CERTIFICATION

I, John R. Damon

certify the information shown herein is true and correct

Signature of Ground Party Chief

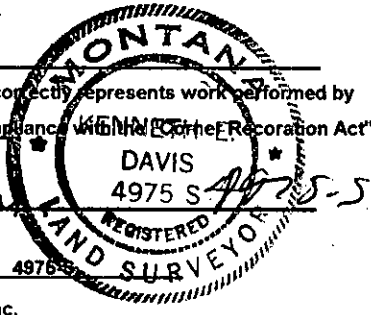
I, Kenneth E. Davis

certify that this Corner Record correctly represents work performed by me or under my direction in compliance with the Corner Recordation Act (79-22-101, 61 sec., M.C.A.)

Signature of Surveyor & Seal

Date: 11/6/98 Reg. No. 4975-S

Employer: Davis Surveying, Inc.



Office of Clerk and Recorder, County of Lincoln

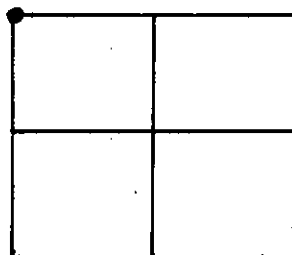
This "corner record" was filed for record on 1-21-98

was noted on the cross-index plat and is assigned page No. 10072

in book No. Coral M. Cunningham, SR

County Official

## Section 8



Cross Index No. 615 Sec. Cor. 718 T. 26 N., R. 29 W., PMM

• THIS CORNER