

# CERTIFIED CORNER RECORDATION

Corner 1/4 S7/S8 T. 26 N., R. 29 W., P.M.M. Lincoln County

## Record :

1903 GLO survey by C.H. Albee.

"Set a sandstone, 14x12x5 ins., 10 ins. in the ground, for 1/4 Sec. Cor., marked 1/4 on W. face; from which:

A tamarack, 18 ins. diam., bears N. 82°30' E., 68 lks. dist., marked 1/4 S8 BT.  
A pine, 6 ins. diam., bears S. 67° W., 42 lks. dist., marked 1/4 S7 BT."

## Found Evidence :

Found a firmly set sandstone, 11x4 ins., 8 ins. exposed above the ground, with 1/4 scribed on the westerly face, from which:

A Larch snag 17 ins. dia. bears N. 82°30' E., 44.80 ft. dist., with visible scribing.  
A Lodgepole Pine snag (blown down) bears S. 67° W., 27.00 ft. dist. (approx.), with visible scribing.

## Perpetuation :

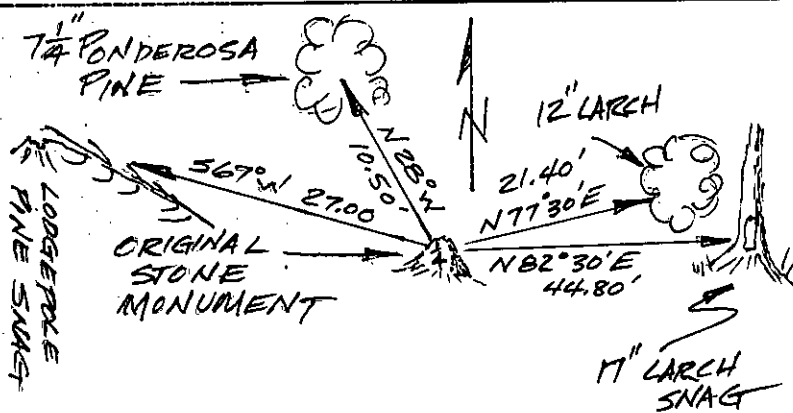
Except found sandstone for original monument, from which:

A Ponderosa Pine 7 1/4 ins. dia. bears N. 28° W., 10.50 ft. dist., scribed (1/4 S7 BT).  
A Larch 12 ins. dia. bears N. 77°30' E., 21.40 ft. dist., scribed (1/4 S8 BT.)

Paint both scribed faces red and 6 inch wide bands around both Bearing Trees.

Attached Bearing Tree signs to both trees.

Magnetic Declination: 18° East



## CERTIFICATION

I, John Damon

certify the information shown herein is true and correct

Signature of Ground Party Chief

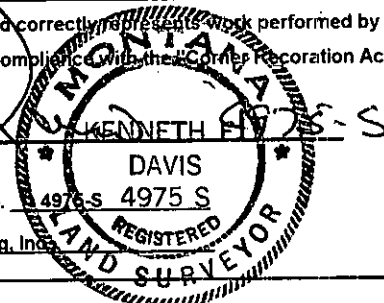
I, Kenneth E. Davis

certify that this Corner Record correctly represents work performed by me or under my direction in compliance with the "Corner Recoraction Act" (70-22-101, et seq., M.C.A.)

Signature of Surveyor & Seal

Date: 1-7-98 Reg. No. 4975 S 4975 S

Employer: Davis Surveying, Inc.



## Sketch of Corner

## Section

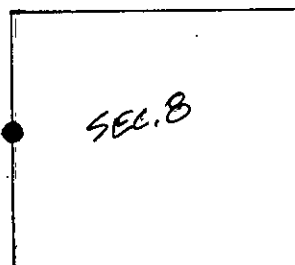
Office of Clerk and Recorder, County of Lincoln

This "corner record" was filed for record on 1-16-98

was noted on the cross-index plat and is assigned page No. 10053

in book No. Coral M. Lanning BDR

County Official



Cross Index No. 1/4 S7/S8 T. 26 N., R. 29 W., PMM

• THIS CORNER