

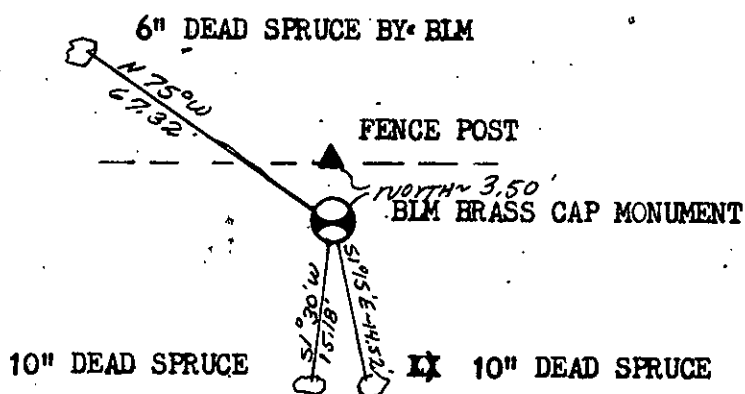
CERTIFIED LAND CORNER RECORDATION

DESCRIPTION OF CORNER EVIDENCE FOUND, AND ORIGINAL RECORD (IF KNOWN)

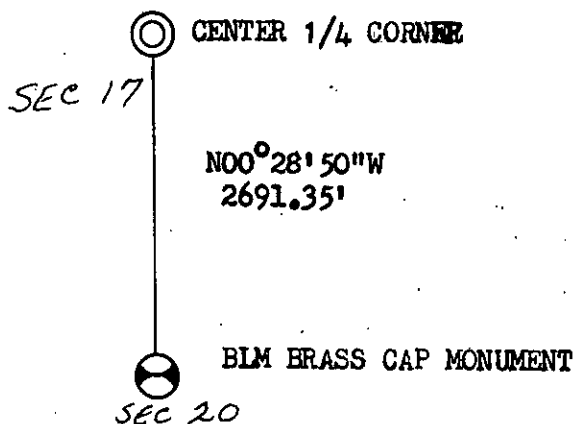
FOUND BLM BRASS CAP MONUMENT

DESCRIPTION OF MONUMENT AND ACCESSORIES ESTABLISHED TO PERPETUATE THE ORIGINAL LOCATION OF THIS CORNER:

Date of work: 9/25/78



SKETCH, WITH COURSE AND DISTANCE TO ADJACENT CORNERS IF DETERMINED IN THIS SURVEY. (MAY SKETCH OR PASTE REPRODUCTION ON REVERSE SIDE.)



Surveyor's Seal

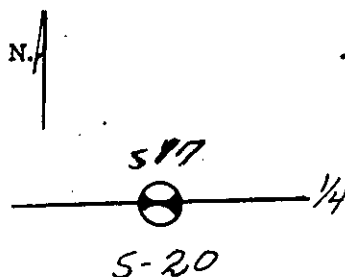
I, THOMAS E. SANDS
certify that the information shown herein is true and correct.

Signature of Ground Party Chief

I, C.W. DOYLE
certify that I have carefully performed or reviewed the work done on the diagrammed corner as reported on this recordation form and approve the same.

Signature of Surveyor

DIAGRAM OF CORNER:



⊙ = Corner recorded on the sheet

2516-5
Registration Number

Office of Clerk and Recorder, County of Lincoln

This "corner record" was filed for record on the 12th day of October, 1978, was noted on the cross-index plat and is assigned page No. 531, in book No. _____

County Official