

INSTRUCTIONS

1. Original and/or subsequent record used to evaluate the corner position.
2. Description of evidence found, note discrepancies in the record, state method of establishing lost or obliterated corners.
3. Description of monument and accessories set to perpetuate the corner position.
4. Sketch of corner, show all pertinent data which can best be shown in a sketch example, corner marking, topography ties, position of accessories, etc.
5. Certification must be signed and sealed by Land Surveyor registered in the State of Montana.
6. Fill in Cross Index & Section Diagram at bottom of sheet.

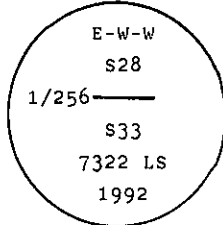
CERTIFIED CORNER RECORDATION

Corner E-W-W 1/256 Secs. 28 & 33 T. 26 N. R. 28 W. P.M.M. Lincoln County

I. No record found

II. No evidence found

III. At determined position, set a 3/4 ins. diam. aluminum rod, 30 ins. long, 26 ins. in the ground with 3 1/4 ins. diam., U.S.F.S., aluminum cap, marked as shown:



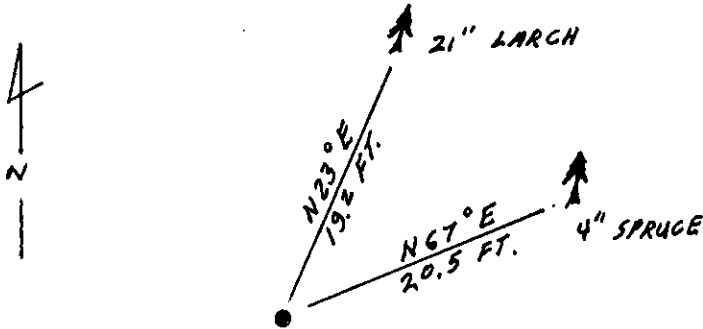
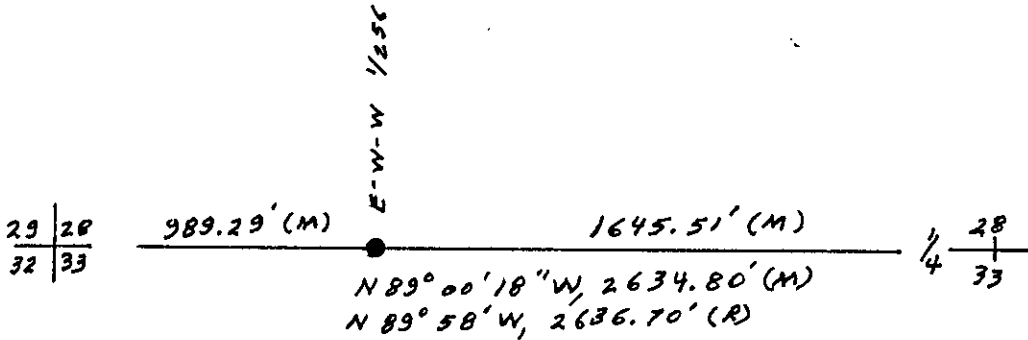
from which

- A larch, 21 ins. diam., bears N23° E, 19.2 ft. dist., mkd. E W W 1/256 S28 BT.
- A spruce, 4 ins. diam., bears N67° E, 20.5 ft. dist., mkd. X BT.

Painted red bands around the bearing trees and attached Land Survey Monument and Bearing Tree signs.

Set a 6 ft. galvanized steel guard post with Land Survey Marker and Property Boundary decals, East, 4 ft.

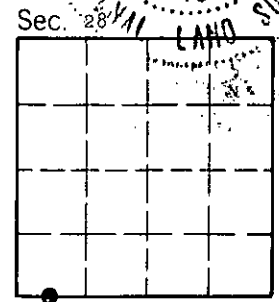
Magnetic Declination: 20° East



SKETCH OF CORNER

CERTIFICATION
 I. Thomas M. Hommel
 certify the information shown herein is true and correct
Thomas M. Hommel
 Signature Ground Party Chief
 I. Alvah F. Hughes
 certify that this Corner Record correctly represents work performed by me or under my direction in compliance with the "Corner Recordation Act" (70-22-101, et seq., M.C.A.)
Alvah F. Hughes
 Signature of Surveyor Seal
 Date: 12/11/92 Reg. No. 7322 LS
 Employer: U.S. FOREST SERVICE

Office of Clerk and Recorder, County of Lincoln. This "corner record" was filed for record on 12-15-92 was noted on the cross-index plat and is assigned page No. 5192, in book No. _____
Carol M. Cummings
 County Official



V-9.75 27 N 30 W
 Cross Index No. _____ T. _____ R. _____ P.M.M.

• - corner this sheet