

CERTIFIED LAND CORNER RECORDATION

DESCRIPTION OF CORNER EVIDENCE FOUND, AND ORIGINAL RECORD (IF KNOWN)

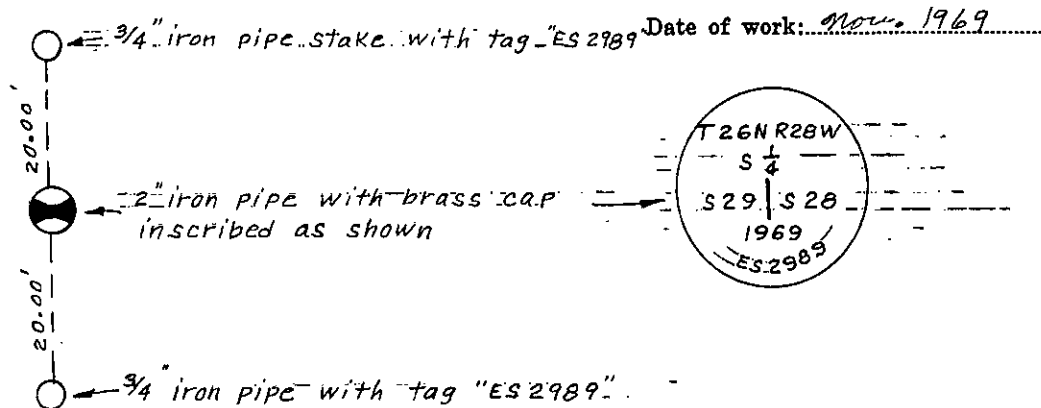
No evidence found.

Original record: Set pine post.

12" pine North 20° 40' East 219 lks.

10" pine North 7° 30' West 265 lks.

DESCRIPTION OF MONUMENT AND ACCESSORIES ESTABLISHED TO PERPETUATE THE ORIGINAL LOCATION OF THIS CORNER:



SKETCH, WITH COURSE AND DISTANCE TO ADJACENT CORNERS IF DETERMINED IN THIS SURVEY. (MAY SKETCH OR PASTE REPRODUCTION ON REVERSE SIDE.)

--- see reverse.

Surveyor's Seal

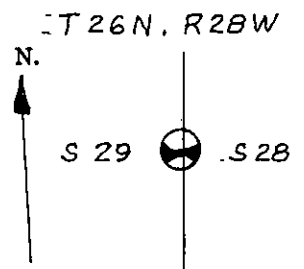
I, D.K. Marquardt
certify that the information shown herein is true and correct.

D.K. Marquardt
Signature of Ground Party Chief

I, D.K. Marquardt
certify that I have carefully performed or reviewed the work done on the diagrammed corner as reported on this recordation form and approve the same.

D.K. Marquardt
Signature of Surveyor

DIAGRAM OF CORNER:



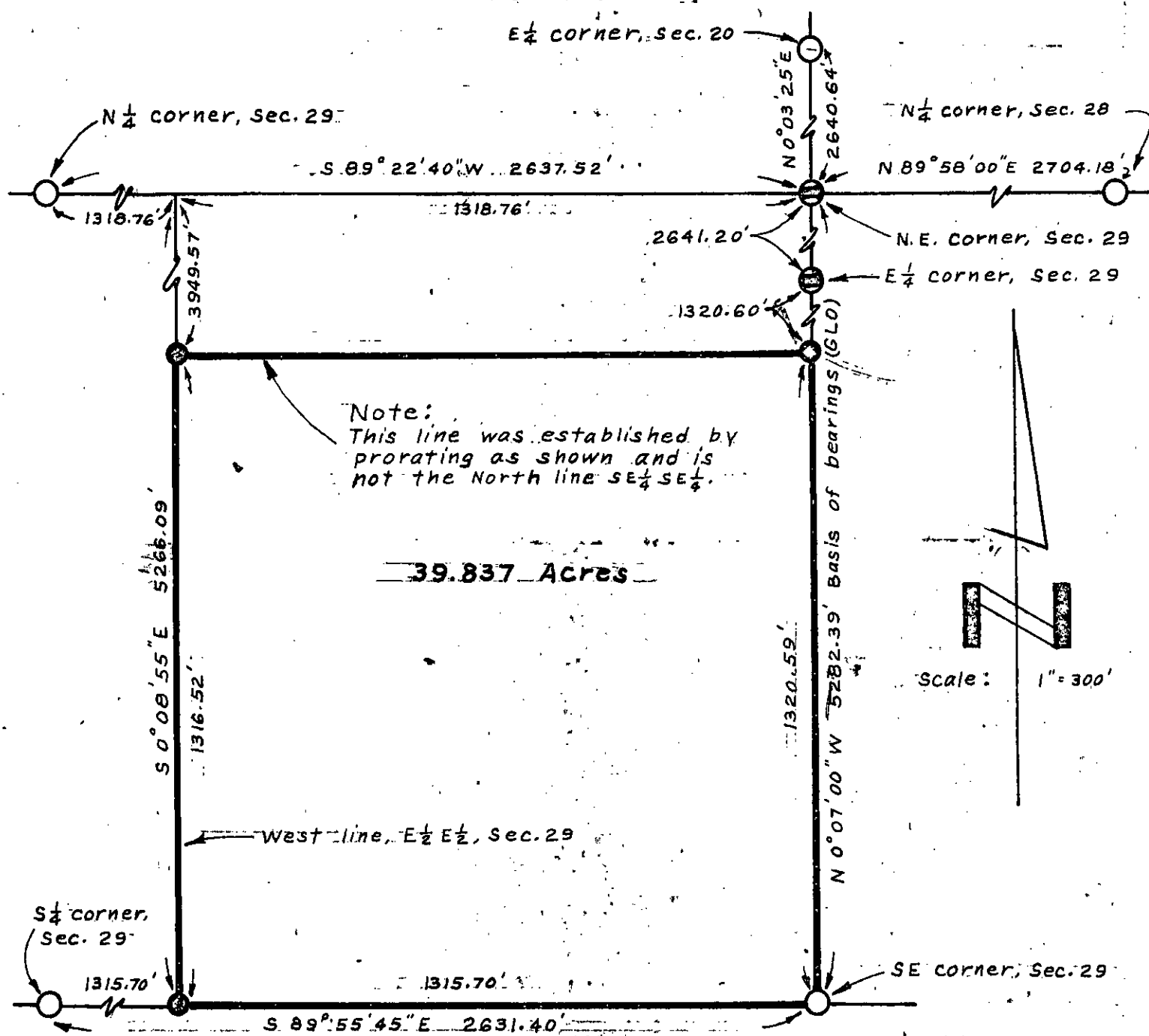
⊗ = Corner recorded on the sheet

ES 2989
Registration Number

Office of Clerk and Recorder, County of Lincoln

This "corner record" was filed for record on the 5th. day of January 1970, was noted on the cross-index plat and is assigned page No. 161, in book No. 1

ELEANOR L. VAUGHN,
County Official



LEGEND:

- Found pipe with brass cap 1964 remonumentation.
- ⊖ Set 2" pipe with brass cap. See corner recordation.
- Set 3/4" x 20" iron pipe with mortar core and brass disc stamped "ES 2989"